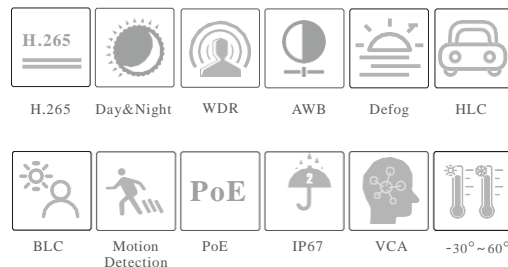


NGC-7327VAZ

2MP Bullet Network Camera



- 2MP (1920 × 1080) @30fps
- H.265+/H.265/H.264+/H.264/MJPEG coding
- ICR auto switch, true day / night vision
- 30 ~ 50m IR night view distance
- Starlight
- Fixed or motorized zoom lens optional
- 3D DNR, true WDR, HLC, BLC, Defog, Smart IR and ROI coding
- Support corridor mode
- Support electronic image stabilization
- Built-in micro SD card slot
- DC12V/PoE power supply
- IP67 ingress protection
- Support three streams
- Support mobile surveillance by smart phones & tablet PCs with iOS and Android OS
- Intelligent analytics



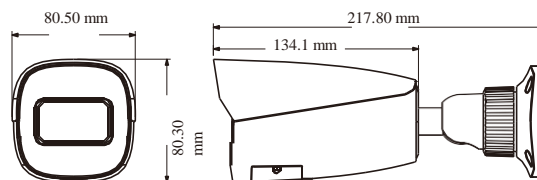
NGC-7327VAZ

SPECIFICATIONS

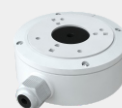
Specifications	Model	NGC-7327VAZ		
Camera				
Image Sensor	1 / 2.8 "CMOS			
Image Size	1920 × 1080			
Electronic Shutter	Auto/Manual mode; manual: 1 / 3 s ~ 1 / 100000 s			
Iris Type	Fixed Iris	DC Iris		
Min. Illumination	0.005 lux@F1.6, AGC ON; 0 lux with IR; 0.0038 lux@F1.4, AGC ON; 0 lux with IR			
Lens	2.8mm@F1.6, H.FoV: 101.5°; V.FoV: 54.6°; D.FoV: 117°	2.8~12mm@F1.4, H.FoV: 100°~31°; V.FoV: 53°~17°; D.FoV: 119°~36°		
	3.6mm@F1.6, H.FoV: 78.9°; V.FoV: 45.5°; D.FoV: 101°			
Focus	Fixed	Motorized		
Lens Mount	M12	Φ14		
Day& Night	ICR			
Wide Dynamic Range	120dB			
BLC	Yes			
HLC	Yes			
Defog	Yes			
Digital NR	3D DNR			
EIS	Yes			
S/N Ratio	≥ 50dB			
Angle Adjustment	Pan: 0°~360°; Tilt: 0°~90°; Rotation: 0°~360°			
Image				
Video Compression	Main stream: H.265+ / H.265 / H.264+ / H.264 Sub / third stream: H.265+ / H.265 / H.264+ / H.264 / MJPEG			
H.264 Compression Standard	Baseline Profile/Main Profile/High Profile			
Resolution	1080P(1920×1080), 720P(1280×720), D1, CIF, 480×240, VGA(640×480)			
Main Stream	1080P/720P(60Hz: 1 ~ 30fps; 50Hz: 1 ~ 25fps)			
Sub Stream	720P/D1/CIF/VGA(60Hz: 1 ~ 30fps; 50Hz: 1 ~ 25fps)			
Third Stream	D1/CIF/480×240/VGA(60Hz: 1 ~ 30fps; 50Hz: 1 ~ 25fps)			
Bit Rate	64 Kbps ~ 6 Mbps			
Bit Rate Type	VBR / CBR			
Audio Compression	G711A / U			
Image Settings	ROI, Saturation, Brightness, Hue, Contrast, Wide Dynamic, Sharpness, Image Mirror, Image Flip, NR, etc. adjustable through client software or web browser			
ROI	Each ROI to be configured separately			
Interfaces				
Network	RJ 45 10M/100M self-adaptive Ethernet port			
Video Output	No			
Audio	1CH audio input			
Storage	Built-in micro SD card slot; up to 256GB			
Reset	Yes			
Alarm	No			
Intelligent Analytics				
Smart Event	Line crossing, region intrusion/entrance/exiting, loitering detection, illegal parking detection, abandoned/ missing object detection			
Target Counting	Target counting by line/area, heat map			
Exception Detection	Scene change, video blur and abnormal color detection, audio exception			
Face Detection	Face detection and face capture			
Video Metadata	Simultaneously captures human body, motor vehicle and non-motor vehicle and extracts 13 human features, 5 motor vehicle features and 1 non-motor vehicle feature			
DORI Distance				
Lens	Detect	Observe	Recognize	Identify
2.8mm	41.49m(136.12ft)	16.60m(54.46ft)	8.30m(27.23ft)	4.15m(13.61ft)
3.6mm	50.89m(166.96ft)	20.35m(66.76ft)	10.18m(33.39ft)	5.09m(16.69ft)
2.8~12mm(W)	43.32m(142.12ft)	17.33m(56.85ft)	8.66m(28.41ft)	4.33m(14.20ft)
2.8~12mm(T)	144.53m(474.17ft)	57.81m(189.66ft)	28.91m(94.84ft)	14.45m(47.40ft)
Functions				
Remote Monitoring	Web Browser/Navaio NVMS2.0/NVR/mobile APP			
Web Browser	IE11(plugin required)/Chrome 89.0+/Edge 89.0+/Firefox 87.0+/Safari 14.0+			

Online Connection	Support simultaneous monitoring for up to 10 users; Support multi-stream real time transmission
Network Protocol	UDP, IPv4, IPv6, DHCP, NTP, RTSP, RTP, RTMP, RTCP, PPPoE, DDNS, SMTP, FTP, SNMP, HTTP, HTTP POST, 802.1x, UPnP, HTTPs, QoS
Interface Protocol	ONVIF(profile S, G, T, M)
Storage	Network remote storage; micro SD card storage
Smart Alarm	Motion detection, SD card error, SD card full, IP address conflict, cable disconnection
General Function	Watermark, video mask, heartbeat, corridor pattern
Security	Video encryption, firmware encryption, HTTPS encryption, configuration encryption, illegal login lock, IP address filtering, 802.1x authentication, basic and digest authentication for HTTP/RTSP
PoE	Yes, IEEE802.3af
IR Distance	30 ~ 50 m
Ingress Protection	IP67
Others	
Power Supply	DC12V/PoE
Power Consumption	< 9.5W
Storage Conditions	- 30 °C ~ 65 °C (-22°F~149°F), Humidity: less than 95 % (non-condensing)
Operating Conditions	- 30 °C ~ 60 °C (-22°F~140°F), Humidity: less than 95 % (non-condensing)
Dimensions (mm)	217.8 × 80.5 × 80.3
Weight (net)	Approx. 0.67KG
Installation	Ceiling mounting; Wall mounting
Certificate	CE, FCC
Environmental Protection	Directive EU RoHS, WEEE(2012/19/EU), directive 94/62/EC and REACH(EC1907/2006)

DIMENSIONS



AVAILABLE ACCESSORIES



NAV-DJB



NAV-DJB + NAV-SAS



NAV-DJB + NAV-SAC