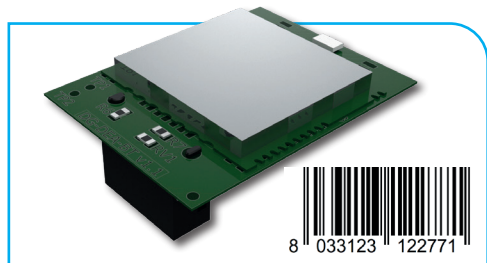




DATASHEET DG-DEA-WF2

A03PRO/SPCPRO

SECURITY. WI-FI DONGLE FOR WIRELESS CONFIGURATION



P/N **DG-DEA-WF2**

DESCRIPTION

DG-DEA-WF2 Wi-Fi Dongle enables the wireless functionality of BR-A03P-Z4 board and SPC-PRO sensors (SN-SPCP-FDR1/SN-SPCP-FDR1M and SN-SPCP-FWL1), allowing their configuration/calibration via the related APPs (SW-A03P-APP or SW-SPCP-APP) for IOS/Android mobile devices. The Dongle has been designed to be used by the installer only during service operations (calibration, parameter configuration, system maintenance).

PACKAGE CONTENTS

Wi-Fi dongle (DG-DEA-WF2) and datasheet.

CONNECTION

The connection of the dongle takes place via the dedicated connector and it is signalled by the lighting of a specific LED:

- LED DS14 on BR-A03P-Z4 board;
- LED DS4 on the above mentioned SPC-PRO sensors.



WHEN THE DONGLE IS CONNECTED TO THE PROCESSING BOARD, THE GENERAL TAMPER RELAY OF THE BOARD IS ACTIVE (LED OUT9 LIT).



ONLY ONE DEVICE (SMARTPHONE OR TABLET) CAN BE CONNECTED AT A TIME. SHOULD YOU WISH TO USE ANOTHER DEVICE IN SUBSEQUENT CONNECTIONS, POWER OFF / ON THE BOARD OR THE DETECTOR AND DISCONNECT THE WI-FI FROM THE DEVICE. ONCE RECONNECTED VERIFY THAT THE IP ADDRESS OF DEASECURITY WI-FI IS 192.168.5.2

Before connecting to the DEA Security Wi-Fi network, we recommend downloading the A03PRO APP or SPCPRO APP installing it on your device.



REFERENCES TO DOWNLOAD THE SPECIFIC APP ARE AVAILABLE IN THE RELATED DATASHEET (BR-A03P-Z4, SN-SPCP-FDR1/FRD1M, SN-SPCP-FWL)

WI-FI CONNECTION

- Enable the Wi-Fi function on the device used.
- Connect to the network with SSID "DEA SECURITY" using "DEA123456" password;



COMPLIANCE

In combination with BR-A03P-Z4, SN-SPCP-FDR1, SN-SPCP-FDR1M, SN-SPCP-FWL1:

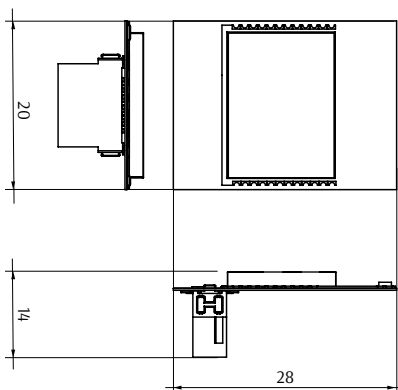
- DIRECTIVE 2014/30/EU (EMC)**
 - EN 50130-4:2011
 - EN 61000-6-3:2007+A1:2011
- DIRECTIVE 2011/65/EU (ROHS)**
 - EN 50581:2012
- DIRECTIVE 2014/53/EU (RED)**
 - EN 301 489-17
 - EN 300 328
- WI-FI CERTIFIED™ B, G, N**
- WPA™ – ENTERPRISE, PERSONAL**
- WPA2™ – ENTERPRISE, PERSONAL**



TECHNICAL DATA

- DIMENSIONS:** 20 x 28 x 14 mm (L x H x D)
- GROSS WEIGHT:** 8 g
- NET WEIGHT:** 4 g
- POWER SUPPLY:** by means of BR-A03P-Z4 board or SN-SPCP-FDR1, SN-SPCP-FDR1M or SN-SPCP-FWL1 detectors
- OPERATING TEMPERATURE:** -25 °C ÷ +70 °C
- RELATIVE HUMIDITY:** <95% non condensing
- AUTHENTICATION WI-FI:** WPA/WPA2
- STANDARD:** IEEE 802.11 b/g/n Wi-Fi

DIMENSIONAL SCHEME



DEA



SECURITY®

Δ03PRO/5PCPRO

DATASHEET

DG-DEA-WF2

DEA Security S.r.l.

Via Bolano, snc - 19037 Santo Stefano di Magra (SP) - tel. +39 0187 699233 - fax +39 0187 697615

VAT NO.: IT00291080455

www.deasecurity.com - dea@deasecurity.com

© 2023 DEA Security S.r.l. - Edition Juin 2023 - v. 1.0.4.

DEA Security srl reserve the right to change at any time and without notice the features of its products.



SCAN ME