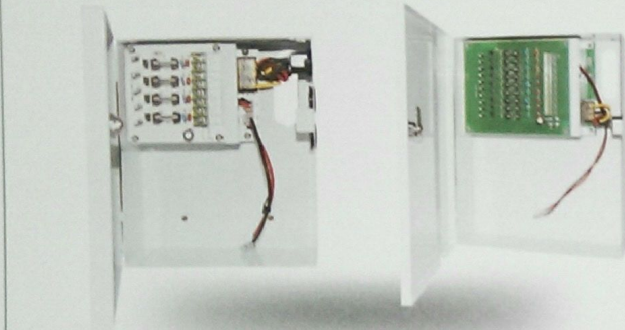


User Manual: Multiple-Way Boxed Power Supply - UPS

Product:







Features:

- Suitable for centralized power system, like CCTV, alarm system, access control.
- With back-up battery interface and battery charge and discharge function, can provide power continually.
- Universal AC input / Full range: 96-264V AC
- Individual fuse for each output channel
- LED indicator for power on
- Built-in EMI Filter, 100% full load burn-in test

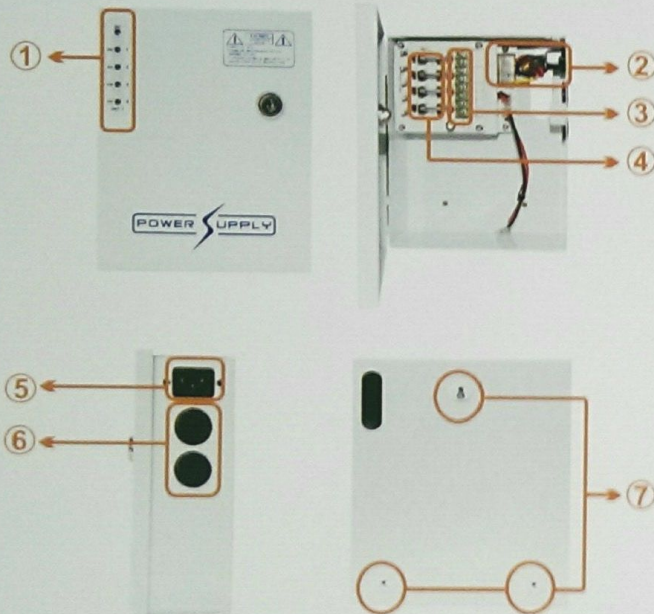
Device Maintenance

No.	Pay Attention	Protection
1	DC terminal "+","-" must not been wrong connected.	Protect power supply and terminal devices.
2	L N cable should not be connected to GND	Protect operator, power supply and terminal devices.
3	Use multimeter test DC terminal voltage when adjusting output voltage by screw.	Protect power supply and terminal devices.

Accessories

Name	Keys	Fixing Drawing	Fixing Plastic Plug& Fixing Screw	Tube Fuse
Picture				
Quantity	1	1	5	1PCS(5A)+5PCS(1A)

Details:



- ① Individual LED's for each DC output.
- ② AC terminals: 96~264VAC, 47~63Hz.
- ③ DC terminals: 12VDC, current should be check on product label.
- ④ Individual fuse (Tube fuse/ PTC)
- ⑤ AC Jack: 96~264VAC, 47~63Hz (AC Cable not included).
- ⑥ Cable threading holes.
- ⑦ Hanging holes.

Installation Steps

Step 1. Professional Operator

The device should be installed by professional operators.

Step 2. Product Checking

Open package, check if all assesories are complete. Connect device to AC power, checking whether all LEDs are lighted. Use multimeter to test output DC voltage, and compare with data showed on label, finding if two data are the same. If any LED not lighted or output voltage is different from label data, please contact the supplier.

Step 3. Position

Use the fixing drawing to position the box. Use impact electric drill to drill holes on the wall. The fixing holes depth should be no more than 1.5 times of the length of assessor-y-plastic plug. Knock the plastic-plug totally into the wall.

Step 4. Fixing

Fix the 1st screw into the plastic plug and hang the power box. Fix other screws from inside of the box. Fix the power box steady.

Step 5. Connection

1. Connect DC cable. Notice: "+"&"-" should be connected right, otherwise tube fuse or terminal device might be damaged, or PTC fuse cut off.
2. Connect AC cable. Use AC plug to connect AC Jack on box side, or connect AC cable to terminal "L", "N", "GND" in the box.

Step 6. Turn on Power

After all connection finished, check again if all cables connected right. Turn on Power, check if each LED is lighted, and if device work properly.

Fault Remedy

Fault Remedy		
Possible Fault	1. LED's can't be lighted.	2. Accessories not completed
Suggested Solution	Contact your supplier	Contact your supplier

CCTV POWER SUPPLY

Model:NAV-S8/9C-B

Input Voltage: AC96~260V 50~60HZ

Output Current: 12V 8A

Output total power: 96W

Channel: 9 CH

BNT
business and trust

CE FC RoHS