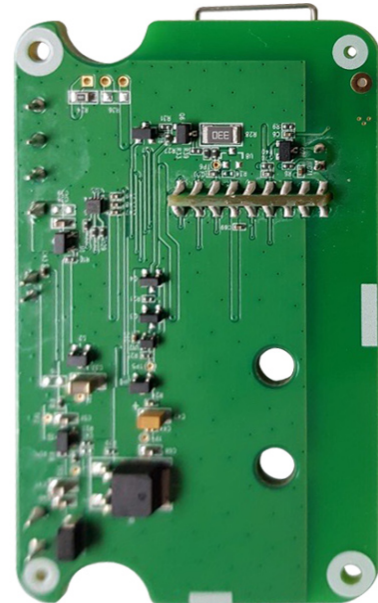


## 1 VESTA digital input/output module card

- 1 VESTA digital input/output module card
- Integrate wired devices into wireless networks
- NO/NC inputs
- Power: 5V ~ 12V DC
- Does not include box



### Reference / Model

**VESTA-155 / DIO-52-F1**

#### Characteristics

One digital input and one digital output  
Dry contact input forms NO (normally open) or NC (normally closed) loops  
Converts the device connected to the digital input into an event trigger  
Turns the device connected to the digital output into an event responder  
Obtains data from and activates hard-to-reach or hard-wired remote devices  
Establishes reliable and fast communication between the control system and remote devices  
LED status indicator  
RF frequency: 868MHz  
1 digital input  
1 digital output (maximum load 2A at 30V DC or 0.5A at 125V AC)  
Power: 5V ~ 12V DC  
Operating temperature -10°C ~ +45°C  
Relative humidity up to 85% (non-condensing)  
EC conformity