



Now Compatible With
amazon alexa



Home Security Gateway Series

Transforming Your Life

HSGW Home Security Gateway Series

Secure Your Peace of Mind



The HSGW is an IP-based multi-functional RF, and Z-Wave smart home security gateway with optional add-on of 3G/4G capabilities, providing comprehensive solutions, including remote management, home security, live visual monitoring, home automation, energy management and emergency monitoring, designed to bring all-around convenience, comfort and safety.

Multiple
Communication Paths



Easy Management

Multiple Communication Paths

- 3G/4G, IP (Ethernet)
- Supports RF or Z-Wave devices
- Optional expansion via USB dongle

Remote Management

- 160 zones
- Smartphone App (iOS & Android) and Web browser

Smart Home Services

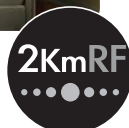
Climax's HSGW Series provides comprehensive smart home services, including remote control, home security, live visual monitoring, home automation, energy management and emergency monitoring.

World-Leading 2-Km RF Range

The HSGW adopts Climax's groundbreaking Security@2km Wireless Technology that delivers RF communication range of 2 kilometers (1.5 miles), fast signal transmission, and relentless reliability.



Smart Home
Services



World-Leading
2-Km RF Range

Home Security

The Best Safety Lies in Smart Living



Live Visual Monitoring

The HSGW can integrate IP cameras and camera PIR motion sensors to deliver live visual monitoring and visual verification. PIR Motion Cameras/IP Cameras captures images and record video clips when unauthorized motions are detected and sent to users and monitoring centers for immediate action.



Alarm Reporting

The IP-based HSGW can send alarm reporting in multiple formats, including alarm events in CID/SIA, SMS, Email, Push reporting via 3G/IP, and send videos and images over Email via IP.

Built-in Siren

The HSGW features a loud built-in siren to blare out immediate warning when emergencies occur. It can also incorporate additional indoor and outdoor sirens to establish a powerful early warning system.



The VST-1818 IP camera, the VST-873 PIR video camera and the VST-852 PIR camera deliver live video and alarm videos/images for visual verification.

Backup Battery

The HSGW have rechargeable battery backup, which means that the gateways will keep working even when the power is out, or if it was purposefully sabotaged. When it comes to your security system, there is no room for error.

Home Automation

Greater Comfort and Convenience

Smart Lighting

Lights controlled by the HSGW and its power switches are automatically turned on/off or dimmed according to custom scenes/schedules.



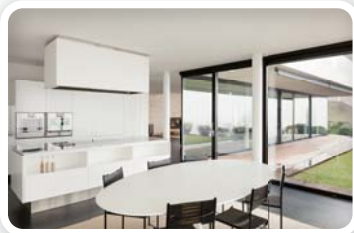
LS-2A-G LSD-2E
Light Switch Series



TMST-2

Thermostats

Climax thermostats work with HSGW to automatically control AC and heating systems and configure schedules and conditions, anytime, anywhere.



Home Automation

The HSGW incorporates Z-Wave accessories to automate your home and enhance your life quality. You can easily tailor the HSGW's services to meet your family's needs anytime, anywhere via smartphone app and web browser.

The HSGW automates lights and appliances according to:



Temperature Settings



Custom Scenes & Schedules



Security Status



Group/Zone Settings



Energy Management

Live Greener with Lower Costs



Emergency Monitoring

Protect Your Home from Fire, Flooding and Air Toxins



PSM-29ZW
Power Meter
Switch



EMD-1ZW
Energy
Meter



PRM2-ZW
Power Meter &
Relay Switch



POVS-1ZW
PIR Occupancy/
Vacancy Sensor

Energy Management

The HSGW can integrate whole-house energy meters to report how much electricity the entire household uses and Z-Wave power meter switches to monitor the power consumption of individual home appliances. With this power-saving system you can develop a useful strategy to reduce energy consumption.

24-Hour Emergency Monitoring

The HSGW can incorporate smoke/heat detectors, water sensors, air quality sensors, panic buttons, light and humidity sensors to protect user's family and property from damage cause by fire, heat, water, or air toxins. This round the clock monitoring ensures comprehensive prevention of disasters and quick response during emergencies.



SD-8ZW
Smoke Detector



Mini-SDZW
Mini Smoke &
Heat Detector



CO-8ZW
Carbon Monoxide
Detector



WLS-23ZW
Water Leakage
Sensor

Be in Control Wherever You Are

Remote and Mobile Control

Vesta Home App

The end user can download the Vesta Home App from the App Store or the Google Play Store to manage the HSGW, receive event reports and view alarm videos/images on a smartphone.

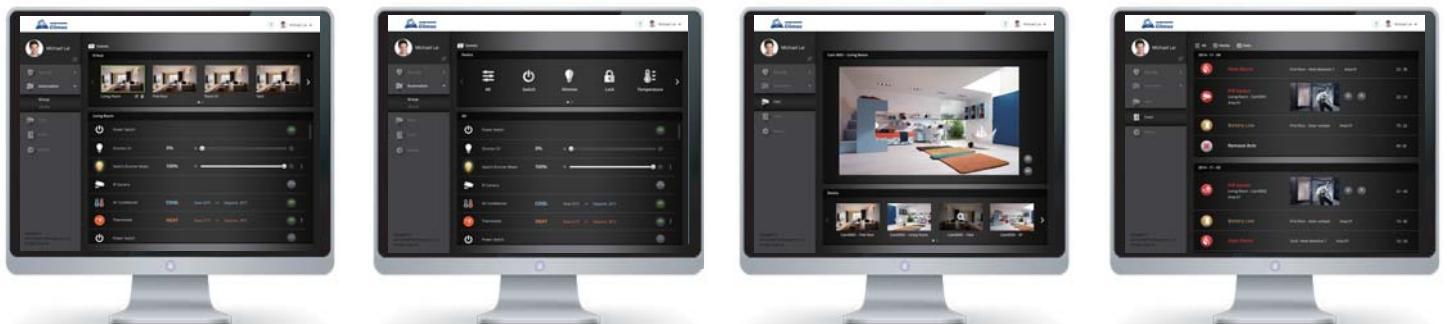
Available on the
App Store

ANDROID APP ON
Google play



Home Portal Server

Home Portal Server, Climax's high-capacity IP/GPRS platform, enables the CMS to remotely manage the HSGW and serve customers.



HSGW-G8



HSGW-G8	
Communication Path Options	IP (Ethernet)
Built-in Module Options	3G/4G, RF, and Z-Wave
Optional Expansion via USB Dongle	Z-Wave or 3G/4G (requires 6B battery pack)
Wireless Zones	160 zones
Reporting Method	CID/SIA, Email, SMS, Push Notification
Programming Method	Web Browser and Mobile App
Features	
Live Visual Verification	✓
Advanced Home Automation	✓
Energy Management	✓
24/7 Emergency Monitoring	✓
Remote Management via Web browser & Mobile App	✓
RF Devices/Sensors Support	✓
Built-in Siren	✓
Specifications	
Z-Wave Protocol	Z-Wave Plus 500 Series, 916.02MHz (Israel)
RF Frequency	433.82MHz
3G/4G Frequencies	2100 / 1900 / 1800 / 1700 / 850 / 800 / 900 / 2600MHz
Power Source	9V @ 1A or 12V @1A, 50/60Hz
Backup Battery	(4B) 4.8V, 1100mAh, Ni-mH rechargeable battery pack; or (6B) 7.2V, 1600 mAh, Ni-mH rechargeable battery pack (required for 3G/4G); or (6B) 7.2V, 2300 mAh, Ni-mH rechargeable battery pack (for 3G/4G)
Backup Battery Life	(4B) 6.5hrs* or (6B) 13hrs*, or (6B) 24hrs*
Operating Temperature	-10°C to 45°C (14°F to 113°F)
Operating Humidity	Up to 85% non-condensing
Dimensions	150 mm x 140 mm x 42 mm

* Note: The actual battery life may vary with product settings, usage patterns and operating environment.