

Air Live
Smart Life  IOT
For Home



Smart Home Kit QIG



● Setup the IoT Package

- Start to use IoT Gateway 1
- Start to use IoT Device 8
- Start to use AirLive SmartLife Plus 13

● Appendix

- Exclude Devices 16
- Include Sensors and Smart Plug (Option) 19
- Include SmartCube 300W (Option) 23

Setup the IoT Package

Start to use IoT Gateway



Start to use IoT Gateway

01

Download the AirLive Smart Life Plus APP

Please visit App Store or Google Play to download AirLive SmartLife Plus APP. You can use QR code scanner software directly or simply search the "AirLive SmartLife Plus".



AirLive SmartLife Plus

App Store



Google Play



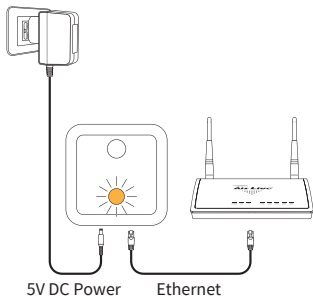
Setup the IoT Package

Start to use IoT Gateway

02 Install the Gateway

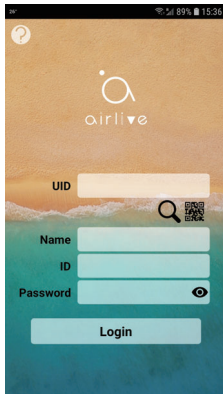
Connect the gateway to the Router by Ethernet cable

Note: When the internet connection is built, a white LED light will turn ON.



03 Execute the APP

Click the “AirLive SmartLife Plus” icon on your smart phone

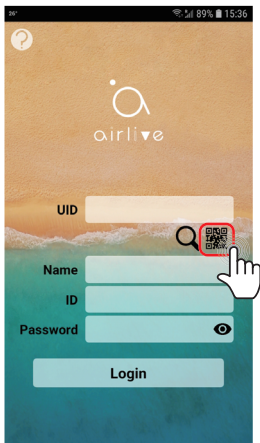


Setup the IoT Package

Start to use IoT Gateway

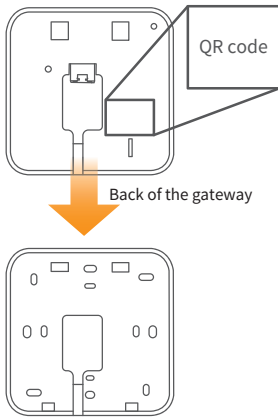
04 Select QR code to Add Gateway

Please select "QR Code" to add gateway.



05 Scan the QR code

Remove the back holder of the Gateway by sliding it down and then, Please scan the QR code to add the gateway.



Setup the IoT Package

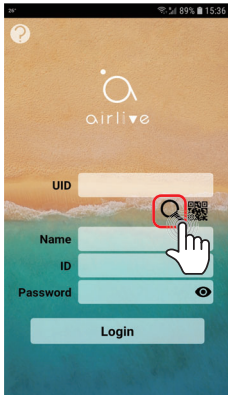
Start to use IoT Gateway

06

Select LAN Search to Add Gateway

Or click "LAN search" to add the gateway if QR code not work.

Note: Make sure your phone and gateway are on the same network segment

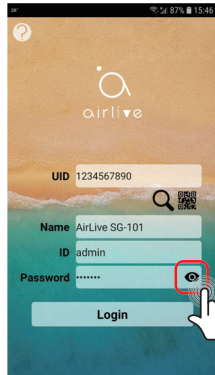


07

Key in the password

Key in gateway ID and password to field. The default ID is "admin" and the password is "airlive". Press the Eye to see your password

Note: You can input your desired name into Name field.



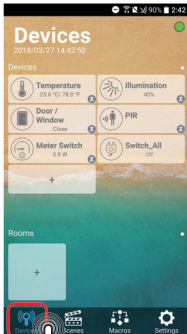
Setup the IoT Package

Start to use IoT Device

08 Devices Screen

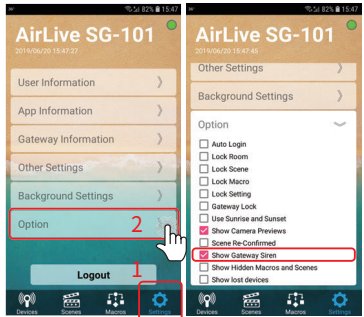
After Login into the Gateway, the APP will display the Scenes page by default to see your devices. Click "Devices" tab, all included sensors should be shown on screen.

Note: If the sensors are not listed or you want to add new sensors, please go to "Include sensor" chapter.



09 Siren

When the Siren is not displayed in the Devices tab, then go to "Setting" >> "Options" and check mark "Show Gateway Siren". The siren will now be shown in the Device tab.

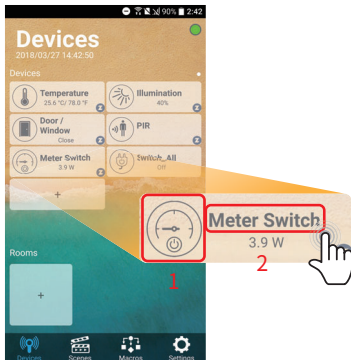


Setup the IoT Package

Start to use IoT Gateway

10 Control Info

1. Click the Icon to see the Device information.
2. Click the Text to Activate the Actuator (Sensor cannot be Activated).



11 Wifi Notice-1

By default the Wifi in the Gateway is turned on. The default SSID is Airlive-XXXXX where XXXX is the wireless MAC address of your Gateway. The default WIFI password is 12345678. It is highly recommended that you change the WIFI settings to your own after setting up the Gateway. For example, turn the WIFI Off or change the SSID and Password.

Setup the IoT Package

Start to use IoT Device

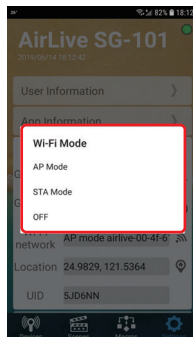
12 Wifi Notice-2

To change the Wifi settings Go to "Setting" and "Gateway Information" Click on the Wireless icon to change the settings



13 Wifi Notice-3

In the Wifi menu you can select OFF to turn the Wifi of the Gateway Off. Or for AP Mode/ STA mode. AP mode is the default mode select this mode to change the SSID and Wifi Password. Select STA mode when you like to connect the Gateway as client to a Wifi network.



Setup the IoT Package

Start to use IoT Gateway / Start to use IoT Device

14 Download APP User's Guide

You can click "Question mark" to download the user's guide for APP operation.



Air Live
Smart Life  IoT For Home



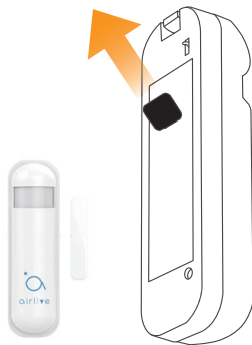
Start to use IoT Device

Setup the IoT Package

Start to use IoT Device

01 Start to use 3 in 1 sensor

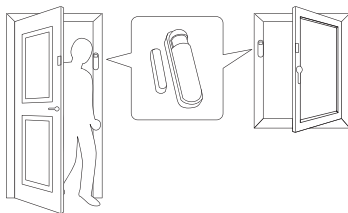
Remove the black mylar, the red light will flash about 10 seconds. And then you can paste the device on the door or window.



02 Install the 3 in 1 sensor

Use the double-sided adhesive attached to back of the device, and paste the device on the door or window.

Note: The sensor should be aligned with the center line when pasting (gap up and down within 1cm / width 2cm)



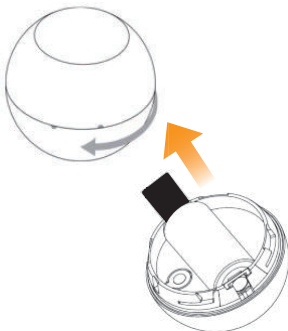
Setup the IoT Package

Start to use IoT Device

03 Start to use Motion(PIR) Sensor

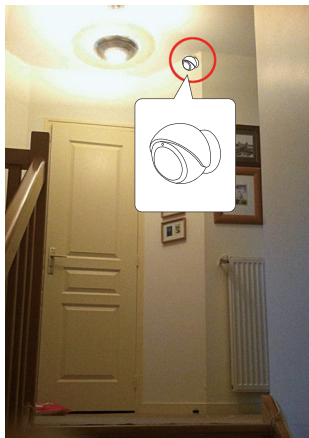
Turn the cover counter-clockwise and open it. Remove the black mylar, the red light will flash 3 times. And then you can fix the bracket on the wall.

Note: Enclosure lock is marked with a dot.



04 Install the Motion sensor

Fix the bracket on the wall. There's a magnet on the backside of this device. it will stick to the bracket.

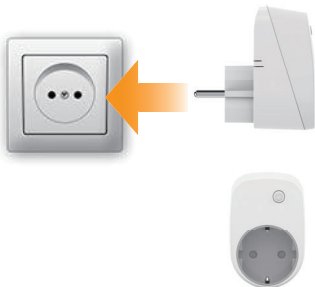


Setup the IoT Package

Start to use IoT Device

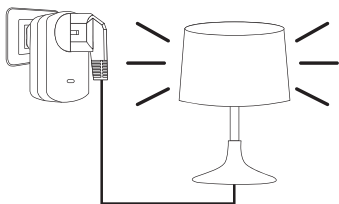
05 Start to use Smart Plug (Option)

Plug the device into the outlet. And then you can plug the appliance's power into the plug.



06 Install the Plug

Plug the appliance's power into the plug.
Ex: table lamp, electric fan

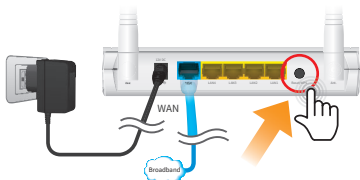


Setup the IoT Package

Start to use IoT Device

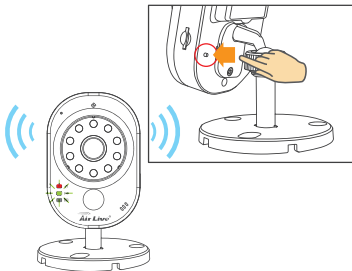
07 Install the SC300W by WIFI ①

We recommend to connect the camera via LAN cable, it is more stable. But if your camera is not installed near your router, please connect the camera via WiFi. The easiest way is to use the WPS push button. Now, please click on the WPS button on your router first



08 Install the SC300W by WIFI ②

Then immediately, please click on the Reset/WPS button on the camera. The green LED will be on for 2 minutes. When SmartCube-300W connects to the router successfully, the LED will be flashing.

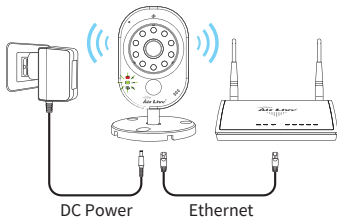


Setup the IoT Package

Start to use IoT Device / Start to use AirLive SmartLife Plus

09 Install the SC300W by Ethernet

If you have connected the camera through WiFi, please skip this step. Do not connect by WiFi and Ethernet cable at the same time. If your camera is near your router, please consider choose connecting by Ethernet which is more stable. Connect the Ethernet cable from camera to the router directly. When successful, the green LED will be flashing.



Air Live
SmartLife IOT For Home



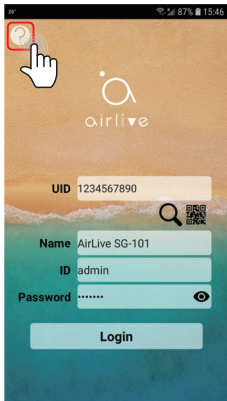
Start to use
AirLive SmartLife Plus APP

Setup the IoT Package

Start to use AirLive SmartLife Plus

01 Execute the SmartLife Plus APP

Click the “AirLive SmartLife Plus” icon on your smart phone, For more information about the use of the APP please see the APP guide by pressing the “?”.



02 Smart Rule

AirLive SmartLife Plus APP features “Smart Rules” which allows you to group sensors from different rooms, as well as to carry out Scenes and Macros Management settings.



Device: Turn on/off individual devices

Room: Create different settings for rooms around the house

Scene: Make multiple actions such as turning on multiple lightings at the same time.

Macro: Set “IF->Then” conditions. For example, if the interior illumination is below certain level, the light will turn on.

Settings: APP & Gateway advance settings.

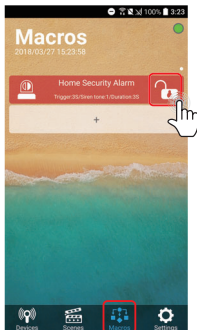
Setup the IoT Package

Start to use AirLive SmartLife Plus

03 Quickly Launch Intruder Alarm

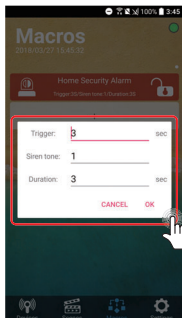
- After login the gateway to click "Macros" tab
- Click the padlock to close/open, then security will be in armed/disarmed mode.

Note: If door/window or PIR is triggered, user will receive a notification and Siren will sound.



04 Setting Intruder Alarm

- Click "Home Security Alarm" on screen
- Trigger: Set the duration for triggering the alarm in armed mode
- Siren Tone: To decide which tune of siren to be used. (There are 6 tones)
- Duration: Set the Duration of the alarm.



Appendix

Exclude Devices

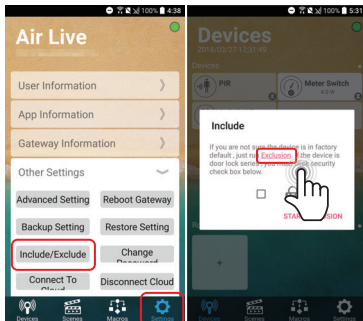


When using the Airlive Kit the Devices have already been included to the gateway by default, but if you want to include a device again you must exclude the device first.

Exclude Devices

01 Exclude Device -1

- Go to setting page and select Other settings.
- Press Include/Exclude icon and press Exclusion.

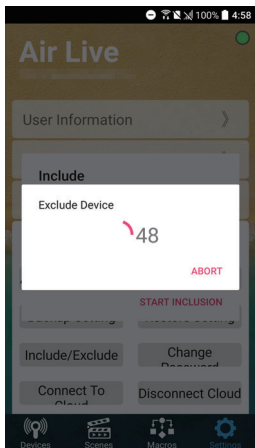


Appendix

Exclude Devices

02 Exclude Device -2

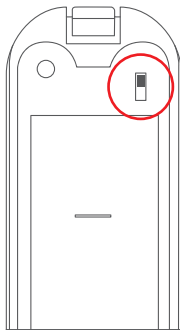
APP will show "Exclude device", and start count down.



03 Exclude 3 in 1 sensor -3

Press tamper key on the back of sensor 3 times in rapid succession then the red light LED will flash.

Note: when device excluded, it will automatically be in the inclusion mode, red light slowly flashing for 30 seconds.



Appendix

Exclude Devices

04 Exclude Motion sensor -4

Press tamper key on the back of sensor 3 times in rapid succession then the red light LED will flash.

Note: when device excluded, it will automatically be in the inclusion mode, red light slowly flashing for 30 seconds.



05 Exclude Smart Plug -5

Press LED key on the plug 3 times in rapid succession then the red light LED will flash.

Note: when device excluded, it will automatically be in the inclusion mode, red light slowly flashing for 30 seconds.

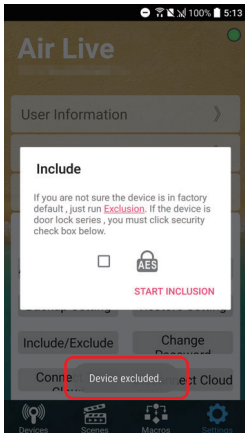


Appendix

Exclude Devices / Include Sensors and Smart Plug (Option)

06 Exclude Device -6

Success to exclude device, APP will show message.



Air Live
Smart Life IOT For Home



Include Sensors and
SmartPlug (Option)

Appendix

Include Sensors and SmartPlug (Option)

01 Include 3 in 1 multi sensor -1

3 in 1 sensor will automatically be in the inclusion mode if you excluded the device, red light slowly flashing for 30 seconds.



02 Include Motion Sensor -2

PIR sensor will automatically be in the inclusion mode if you excluded the device, red light slowly flashing for 30 seconds.



Appendix

Include Sensors and SmartPlug (Option)

03 Include Smart Plug -3

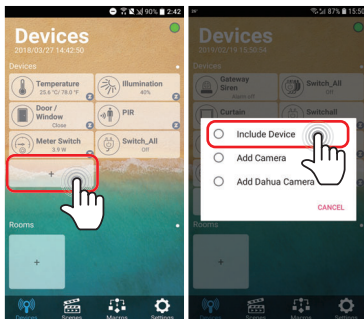
Plug the device into the outlet.

Note: Plug will automatically be in including mode if you excluded device, red light slowly flashing for 30 seconds.



04 Include Device -1

- Go to Devices page and click "+" icon.
- Press Include Device

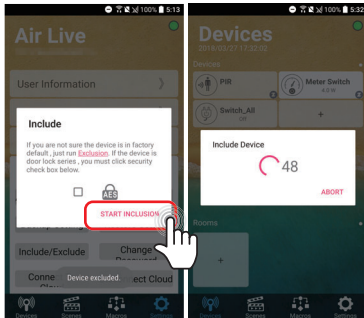


Appendix

Include Sensors and SmartPlug (Option)

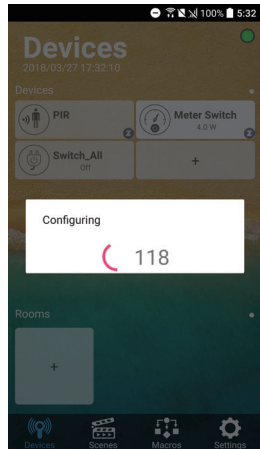
05 Include Device -2

- Press "START INCLUSION"
- Start to include a device.



06 Include Device -3

When the device is being included, APP will configure the setting into gateway.

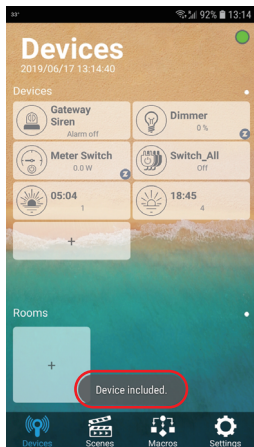


Appendix

Include Sensors and SmartPlug (Option) / Include SmartCube 300W (Option)

07 Include Device -4

When the Inclusion is finished the APP will display the message "Device Included" it is now ready for use.



Air Live
Smart Life 



Include SmartCube 300W (Option)

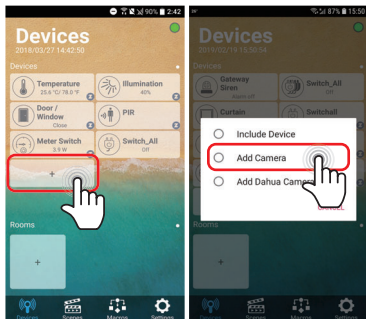
If you want to use SD-card for video recording, please see the guide in the FAQ section of the SmartCube 300W on www.airlive.com

Appendix

Include SmartCube 300W (Option)

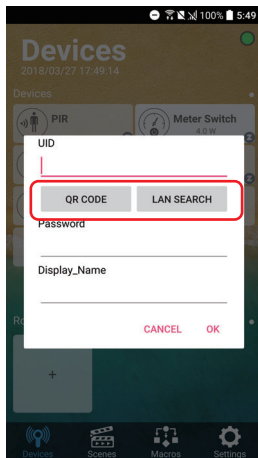
01 Add Camera

- Go to Devices page and click "+" icon.
- Press Add camera



02 Select scan QR code or LAN search

Please select "QR Code" or "LAN Search" to add camera.



Appendix

Include SmartCube 300W (Option)

03 Scan the QR code

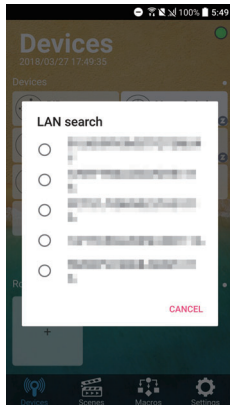
Please scan the QR code to add the camera. You can find the camera's QR code on the back of the camera.



04 LAN Search

Or click "LAN search" to add the camera if QR code not work.

Note: Make sure your phone and camera are on the same network segment



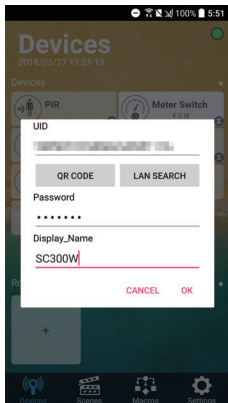
Appendix

Include SmartCube 300W (Option)

05 Key in the password

Key in camera's password and display name to field. The default password is "airlive"

Note: display name can input you desired name.



06 Success Add Camera

Camera icon will show on Device screen.

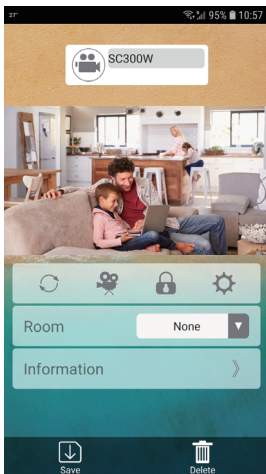


Appendix

Include SmartCube 300W (Option)

07 Live View

Click camera icon to live view streaming



08 Camera Settings

You can refresh the video image or snapshot or recording or change password or delete the camera.



Refresh Streaming



Recording Video



Key in password



Change Video Quality or
Change Password



Delete camera

For information on how to Mirror or Flip the SC300W camera image. Please scan the QR code.





FCC Interference Statement

This equipment has been tested and found to comply with the limits for a Class B digital device, pursuant to Part 15 of the FCC Rules.

These limits are designed to provide reasonable protection against harmful interference in a residential installation.

This equipment generates, uses and can radiate radio frequency energy and, if not installed and used in accordance with the instructions, may cause harmful interference to radio communications.

However, there is no guarantee that interference will not occur in a particular installation.

If this equipment does cause harmful interference to radio or television reception, which can be determined by turning the equipment off and on, the user is encouraged to try to correct the interference by one of the following measures:

- Reorient or relocate the receiving antenna.
- Increase the separation between the equipment and receiver.
- Connect the equipment into an outlet on a circuit different from that to which the receiver is connected.
- Consult the dealer or an experienced radio/TV technician for help.

This device complies with Part 15 of the FCC Rules. Operation is subject to the following two conditions:

- (1) This device may not cause harmful interference, and
- (2) This device must accept any interference received, including interference that may cause undesired operation.

FCC Caution: Any changes or modifications not expressly approved by the party responsible for compliance could void the user's authority to operate this equipment.

This transmitter must not be co-located or operating in conjunction with any other antenna or transmitter.

Warning

Do not dispose of electrical appliances as unsorted municipal waste, use separate collection facilities.

Contact your local government for information regarding the collection systems available.

If electrical appliances are disposed of in landfills or dumps, hazardous substances can leak into the groundwater and get into the food chain, damaging your health and well-being.

When replacing old appliances with new ones, the retailer is legally obligated to take back your old appliance for disposal at least for free of charge.

RF Exposure Information (SAR)

This device meets the government's requirements for exposure to radio waves. This device is designed and manufactured not to exceed the emission limits for exposure to radio frequency (RF) energy set by the Federal Communications Commission of the U.S. Government.

The exposure standard employs a unit of measurement known as the Specific Absorption Rate, or SAR. The SAR limit set by the FCC is 1.6 W/kg. Tests for SAR are conducted using standard operating positions accepted by the FCC with the EUT transmitting at the specified power level in different channels.

The FCC has granted an Equipment Authorization for this device with all reported SAR levels evaluated as in compliance with the FCC RF exposure guidelines. SAR information on this device is on file with the FCC and can be found under the Display Grant section of www.fcc.gov/eot/ea/fccid after searching on FCC ID: ODM5G101

Smart Home Kit QIG



www.airlive.com

OvisLink Corp.

5F, No.6, Lane 130, Min-Chuan Rd., Hsin-Tien Dist., New Taipei City 231, Taiwan TEL: +886 2218 6888 FAX: +886 2218 6988