

CATALOGUE  
**2018**

NEW SECURITY  
**CONCEPT**  
your security our mission.



Quality from experience  
**made in Italy.**

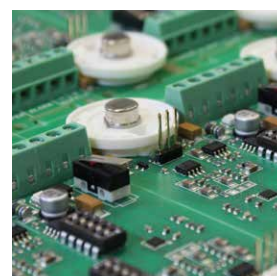
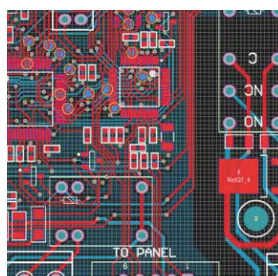
**AMC**  
YOUR SECURITY CHOICE



**AMC Elettronica** was founded in 1974 and the first product designed by the company was in collaboration with the University of Pavia - this being the Microwave detector "RIVELA". It immediately obtained a huge response in the Italian and the foreign market. Within a few years the Company established itself as a successful player within the Security Sector despite this to be still an unknown sector in the Italian Industry, the most impact caused by the high quality design and local production of the detectors. In the 80's AMC decided to launch the Alarm Control Units, Diallers and Sirens to the already now well established detector market. In the mid 80's the EL80 was launched - the first AMC' Alarm Control Unit, while four years later the first dialler with vocal synthesis, the CT901SV was introduced to the market. The 90's indicated a revolutionary change in the security market and AMC was ready to meet this demand by launching the first remote controllable and radio system. AMC, always moving with the times, on and on this occasion, at the Milan's International Security Fair in 98' presents the C136 Alarm Control Unit, a fully pc programmable system via modem, and the CR100 system, a completely lithium-ion battery supplied radio alarm system.

## Quality from experience made in Italy.

Today **AMC** has a well established international distribution network, featuring excellent products, "made in Italy" and especially paying attention to detail when designing the products. This has been well recognised in the industry, testimony to this is the numerous awards received for meeting customer needs and expectations. AMC is a wholly Italian owned company. Their main activity is the production and the commercialisation of Alarm components. The company's headquarter is in Alzate Brianza which is located near Como and only 30 km north of Milan, which can be reached with ease via the A4 and A8 highway – pretty centrally and easily reachable from all 3 main Airports, i.e. Bergamo, Milano Linate and Milano Malpensa. In Lurago d'Erba, only a few kilometres away from the headquarters, we have our test laboratory and a fully automated production line for the SMT technology electronic boards. The Laboratory can perform CE approval for third parties, thanks to the complete high and latest technology instruments. To greater guarantee the product, the business seeks further approval from outside authorities, authorised to inspect the equipment continuously to allow to maintain the high quality.



## Index

### Control panels

K Series	pag. 2
X Series	pag. 4
X64	pag. 6
XR800 / XR900	pag. 8
AMC MANAGER Application	pag. 10
Unika - touchscreen keypad	pag. 11
Wired Systems Accessories	pag. 12
Radio Systems Accessories 800 Series	pag. 15
Radio Systems Accessories 900 Series	pag. 15
Radio Systems Accessories 400 Series	pag. 18

### Detectors

Soutdoor	pag. 21
Promask	pag. 24
Smile	pag. 25
Mouse	pag. 26

Mouse GS	pag. 27
GS1 / SS14	pag. 28
DT16 - IF16/L - IF16/T	pag. 29

### Sirens

Blade	pag. 30
SR Series	pag. 31
Iside	pag. 32
24 V Sirens	pag. 33
PZ2	pag. 33

### GPRS transmitter and receiver

IT-GPRS TX / IT-GPRS RX	pag. 34
-------------------------	---------

### GSM speech dialler

Voxout	pag. 35
--------	---------

### Active infrared barriers

Flex Series	pag. 36
-------------	---------

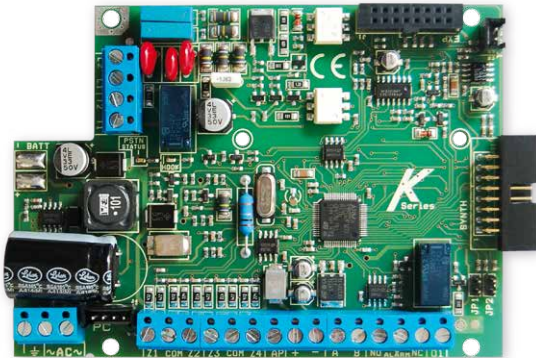
# K Series

EN 50131 / GRADE 2 / CLASS 2



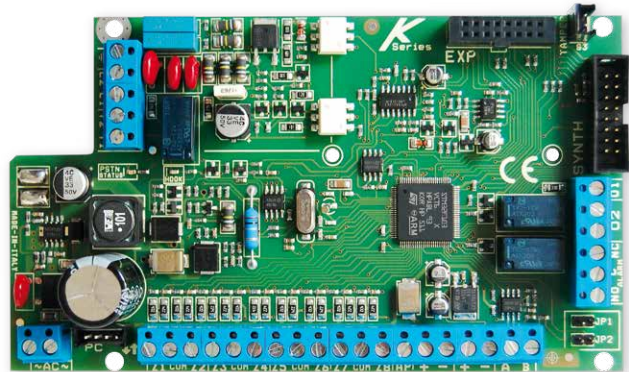
## K4

- from 4 to **16** wired zones
- 64 wireless zones



## K8

- from 8 to **32** wired zones
- 64 wireless zones



## K8plus

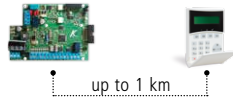
- from 8 to **64** wired zones
- 64 wireless zones

GPRS/3G module

IP module

**Multisplit zones**  
K4 - K8 (without expansions)

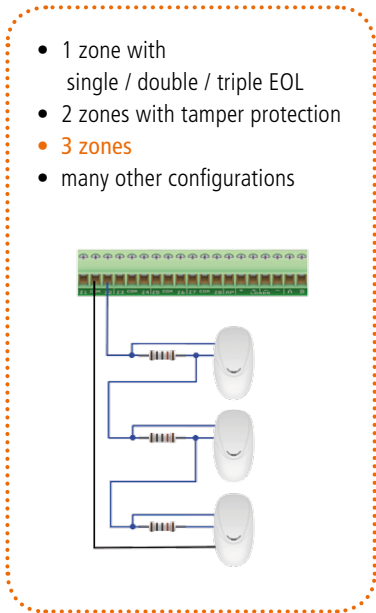
BUS line (4 wires) RS485



CMS multiformat

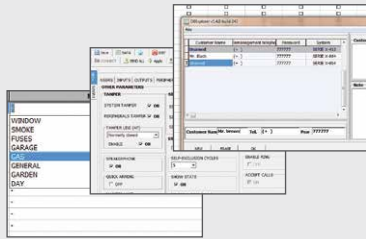
Hybrid system (wired and wireless input)

PSTN on board



iOS / Android Application  
**AMCMANAGER**





Settable by PC



The **K Series** are security control panels for building protection; hybrid system (wired and wireless input); EN 50131, Grade 2, Class 2 approved. The control panel is equipped of 4/8 zones, expandable to 16/64. It is possible to obtain more zones by double and triple EOL split line (K4-K8). K Series are able to notify one or more situations of ALARM, ROBBERY, TAMPERING and TROUBLE with different carriers:

- **PSTN LINE on board** (voice call, Contact ID, SIA fsk, etc.)
- **GPRS/3G module** (voice call, SMS, Contact ID, DC09 IP protocol for Contact ID and SIA IP)
- **IP module** (DC09 IP protocol for Contact ID and SIA IP)

The panel can be controlled by new App AMC MANAGER (iOS / Android) with IP module and/or GPRS / 3G module. The programming can be made with keypad and/or PC software. The programming with software can be made remotely with IP module and/or GPRS / 3G module.



Technical Features			
	K4	K8	K8 PLUS
<b>ZONES</b>	4 - 16 wired, split double, triple EOL	8 - 32 wired, split double, triple EOL	8 - 64 wired, double, triple EOL
<b>WIRELESS ZONES</b>	64 zones	64 zones	64 zones
<b>OUTPUTS</b>	2 on board - expandable to 8 (with expansions and keypads)	2 on board - expandable to 8 (with expansions and keypads)	2 on board - expandable to 17 (with expansions and keypads)
<b>USER CODE / TAG / REMOTE</b>	32 users	32 users	64 users
<b>AREAS</b>	4	4	8
<b>GROUPS</b>	4	4	4
<b>KEYPAD</b>	4	4	8
<b>TAG READER</b>	4	4	8
<b>LOG EVENTS</b>	1000	1000	1000
<b>PHONE NUMBERS</b>	8 for SMS and private calls + 8 for CMS	8 for SMS and private calls + 8 for CMS	8 for SMS and private calls + 8 for CMS
<b>CARRIERS</b>	PSTN on board, GPRS/3G module, IP module	PSTN on board, GPRS/3G module, IP module	PSTN on board, GPRS/3G module, IP module
<b>REMOTE MANAGEMENT IP - GPRS/3G</b>	by app (iOS - Android)	by app (iOS - Android)	by app (iOS - Android)
<b>REMOTE PROGRAMMING IP - GPRS/3G</b>	by PC software	by PC software	by PC software
<b>TIMERS</b>	4 per day week	4 per day week	4 per day week

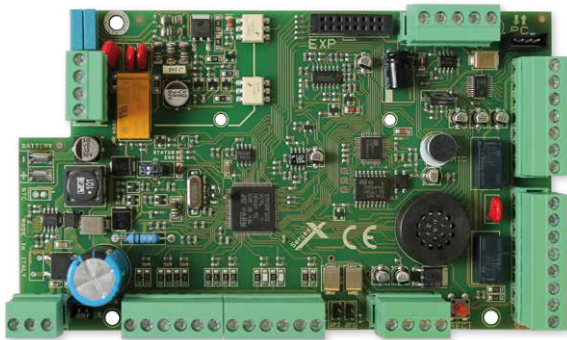
## XSeries



EN 50131 / GRADE 2 / CLASS 2

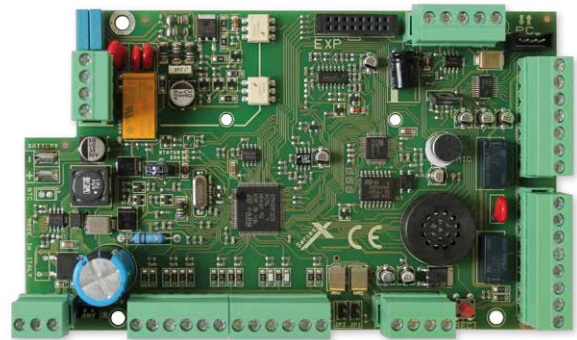
**X824**

- from 8 to **32** wired zones
- 64 wireless zones



**X864**

- from 8 to **64** wired zones
- 64 wireless zones



**X412**

- from 4 to **16** wired zones
- 64 wireless zones



GPRS/3G module

IP module

PSTN on board

BUS line (4 wires) RS485



Voice support



Hybrid system (wired and wireless input)

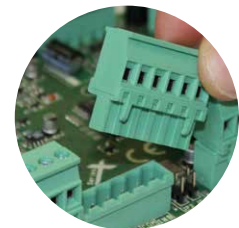
iOS / Android Application  
**AMCMANAGER**



CMS multiformat

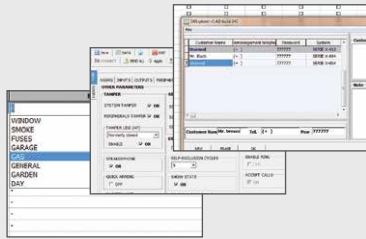


Voice managing



Clamps removable (X824-X864)





Settable by PC



The **X Series** are security control panels for building protection; hybrid system (wired and wireless input); EN 50131, Grade 2, Class 2 approved. The control panel has audio support on board and is equipped of 4/8 zones, expandable to 16/64. It is possible to obtain more zones by double and triple EOL split line (X412-X824). X Series are able to notify one or more situations of ALARM, ROBBERY, TAMPERING and TROUBLE with different carriers:

- **PSTN LINE on board** (voice call, Contact ID, SIA fsk, etc.)
- **GPRS/3G module** (voice call, SMS, Contact ID, DC09 IP protocol for Contact ID and SIA IP)
- **IP module** (DC09 IP protocol for Contact ID and SIA IP)

The panel can be controlled by new App AMC MANAGER (iOS / Android) with IP module and/or GPRS / 3G module. The programming can be made with keypad and/or PC software. The programming with software can be made remotely with IP module and/or GPRS / 3G module.



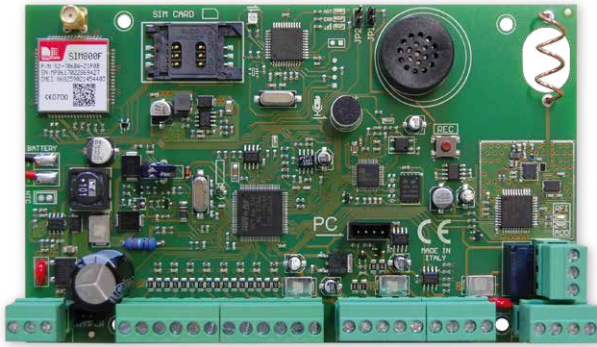
Technical Features			
	X412	X824	X864
<b>ZONES</b>	4 - 16 wired, split double, triple EOL	8 - 32 wired, split double, triple EOL	8 - 64 wired, double, triple EOL
<b>WIRELESS ZONES</b>	64 zones	64 zones	64 zones
<b>OUTPUTS</b>	5 on board - expandable to 8 (with expansions and keypads)	5 on board - expandable to 8 (with expansions and keypads)	5 on board - expandable to 17 (with expansions and keypads)
<b>USER CODE / TAG / REMOTE</b>	32 users	32 users	64 users
<b>AREAS</b>	4	4	8
<b>GROUPS</b>	4	4	4
<b>KEYPAD</b>	4	4	8
<b>TAG READER</b>	4	4	8
<b>LOG EVENTS</b>	1000	1000	1000
<b>PHONE NUMBERS</b>	8 for SMS and private calls + 8 for CMS	8 for SMS and private calls + 8 for CMS	8 for SMS and private calls + 8 for CMS
<b>CARRIERS</b>	PSTN on board, GPRS/3G module, IP module	PSTN on board, GPRS/3G module, IP module	PSTN on board, GPRS/3G module, IP module
<b>REMOTE MANAGEMENT IP - GPRS/3G</b>	by app (iOS - Android)	by app (iOS - Android)	by app (iOS - Android)
<b>REMOTE PROGRAMMING IP - GPRS/3G</b>	by PC software	by PC software	by PC software
<b>TIMERS</b>	4 per day week	4 per day week	8 per day week

WIRED / WIRELESS

# X64



# NEW



- **64** wireless / wired zones
- **56** programmable wireless devices on board
- **56** programmable wireless devices with second wireless expansion
- **GPRS** or **3G** modules on board
- **868 MHz** or **916 MHz** frequency

**Bidirectional wireless system**

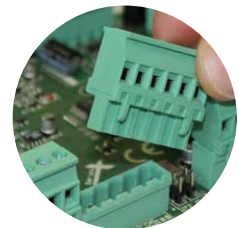
Voice support 



CMS multiformat

Radio range 1 km

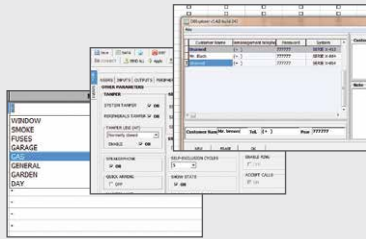
BUS line (4 wires) RS485



Clamps removable

iOS / Android Application  
**AMCMANAGER**





Settable by PC



Technical Features	
	X64
<b>WIRED ZONES ON BOARD</b>	8
<b>WIRELESS DEVICES ON BOARD</b>	32 devices 20 remote controls 4 sirens
<b>WIRELESS / WIRED ZONES</b>	64
<b>OUTPUTS</b>	2 on board expandable to 14 (with expansions and keypads)
<b>USER CODE</b>	64 users
<b>AREAS</b>	8
<b>GROUPS</b>	4
<b>KEYPAD</b>	8
<b>TAG READER</b>	8
<b>LOG EVENTS</b>	1000
<b>PHONE NUMBERS</b>	8 for SMS and private calls + 8 for CMS
<b>CARRIERS</b>	GPRS / 3G
<b>REMOTE MANAGEMENT GPRS/3G</b>	by app (iOS - Android)
<b>REMOTE PROGRAMMING GPRS/3G</b>	by PC software
<b>TIMERS</b>	8 per day week

The **X64** is security control panel for building protection; hybrid system (wired and wireless input). The control panel has audio support on board and it's equipped of 8 wired zones on board expandable to 64 with expansion module KX-in. The control panel has an integrated radio receiver on which it is possible to program 32 wireless devices, 20 remote controls and 4 wireless sirens. The control panel support 64 wireless devices. X64 is able to notify one or more situations of ALARM, ROBBERY, TAMPERING and TROUBLE with different carriers:

#### GPRS/3G module

(voice call, SMS, Contact ID, DC09 IP protocol for Contact ID and SIA IP).

The panel can be controlled by new App AMC MANAGER (iOS / Android).

The programming can be made by keypad and/or PC software via USB cable and remotely via Cloud.

		2G	3G	3G	AMC WIRELESS 868 MHz	AMC WIRELESS 916 MHz
	GSM/GPRS/EDGE	850/900/1800/1900 MHz	900/1800 MHz	850/900/1800/1900 MHz		
	UMTS/HSDPA		900/2100 MHz	850/1900 MHz		
<b>X64 Codes:</b>						
	<b>X64-2E8</b>	✓			✓	
	<b>X64-3E8</b>		✓		✓	
	<b>X64-3A8</b>			✓	✓	
	<b>X64-2A9</b>	✓				✓
	<b>X64-3E9</b>		✓			✓
	<b>X64-3A9</b>			✓		✓

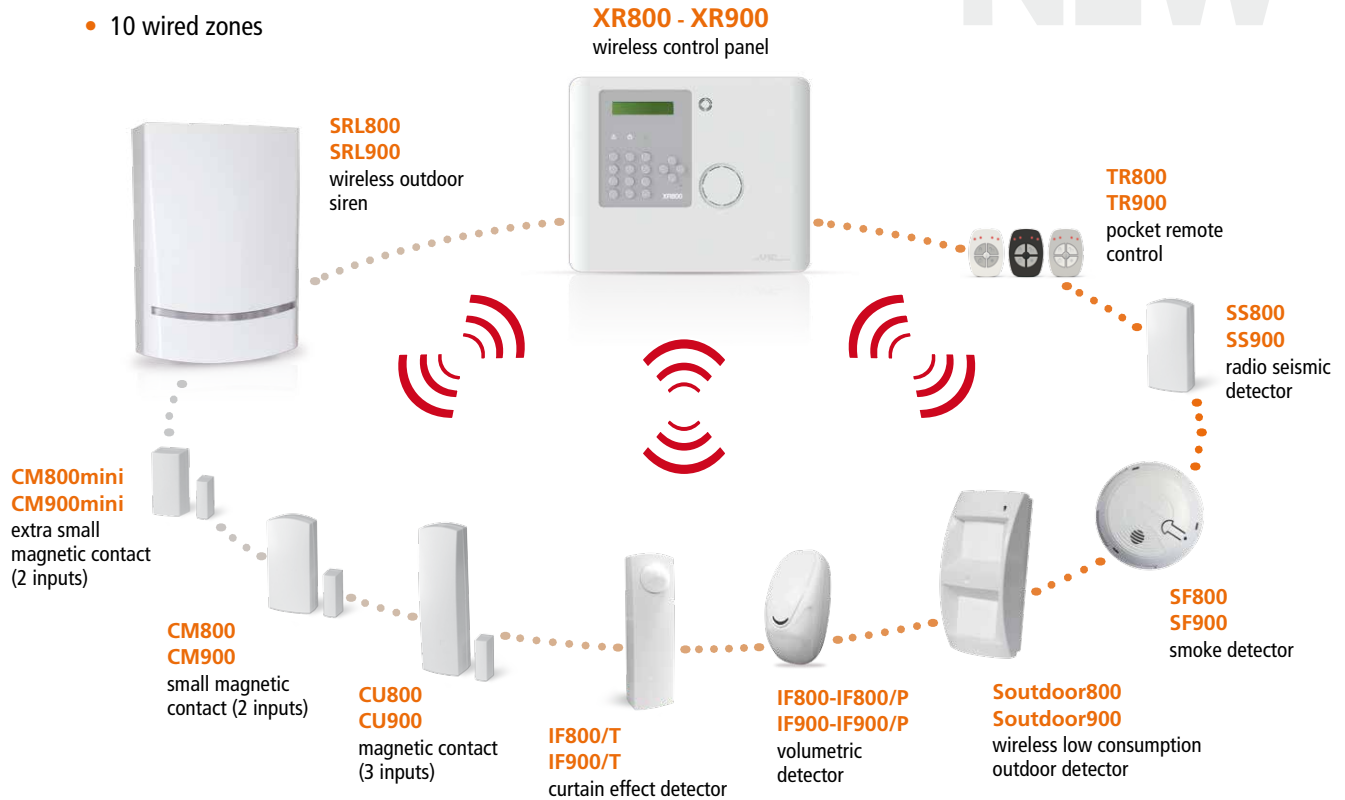
**XR800** • 868 MHz

**XR900** • 916 MHz



**NEW**

- 64 wireless zones
- 10 wired zones



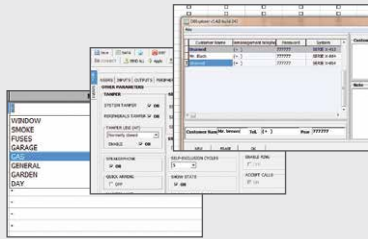
The **XR800** and **XR900** are new wireless control panels by AMC. The control panels are equipped of 64 wireless zones that are configured in different functions (alarm, robbery, smoke, detection, seismic). They are able to notify one or more situations of ALARM, ROBBERY, TAMPERING and TROUBLE with different carriers:

- **PSTN LINE on board** (voice call, Contact ID, SIA fsk, etc.)
- **GPRS/3G module** (voice call, SMS, Contact ID, DC09 IP protocol for Contact ID and SIA IP)
- **IP module** (DC09 IP protocol for Contact ID and SIA IP)

The panel can be controlled by new App AMC MANAGER (iOS/Android) with IP module and/or GPRS/3G module. The programming can be made with keypad and/or PC software. The programming with software can be made remotely with IP module and/or GPRS/3G module.

XR800 and XR900 are compatible with all ACCESSORIES of K and X Series:

<p><b>Unika</b> touchscreen keypad</p>	<p><b>K-lcd Blue</b> keypad</p>	<p><b>KX-in</b> board expansion</p>	<p><b>IP1 module</b></p>
<p><b>K-lcd Light</b> <b>K-lcd Light Plus</b> keypad</p>	<p><b>K-lcd Blue Tag</b> keypad with RFID / NFC tag reader</p>	<p><b>KX-out</b> board expansion</p>	<p><b>XGPRS / X3E / X3A</b> modules</p>



Settable by PC



- Bidirectional wireless system
- Radio range 1 km
- Vectors: PSTN - IP - GPRS - 3G
- Batteries included
- BUS line (4 wires) RS485
- Siren integrated
- Voice support 
- PSTN on board



CMS multifarmat



Technical Features	
	XR800 / XR900
<b>WIRELESS ZONES</b>	64 zones
<b>WIRED ZONES</b>	2 on board - expandable to 10 (with expansions and keypads)
<b>OUTPUTS</b>	2 on board - expandable to 14 (with expansions and keypads)
<b>USER CODE / TAG / REMOTE</b>	64 users
<b>AREAS</b>	4
<b>GROUPS</b>	4
<b>KEYPAD</b>	2
<b>TAG READER</b>	4
<b>LOG EVENTS</b>	1000
<b>PHONE NUMBERS</b>	8 for SMS and private calls + 8 for CMS
<b>CARRIERS</b>	PSTN on board, GPRS/3G module, IP module
<b>REMOTE MANAGEMENT IP - GPRS/3G</b>	by app (iOS - Android)
<b>REMOTE PROGRAMMING IP - GPRS/3G</b>	by PC software
<b>TIMERS</b>	4 per day week

iOS / Android Application  
**AMCMANAGER**





## AMC MANAGER

APPLICATION FOR MANAGING THE CONTROL PANEL VIA SMARTPHONE AND TABLET



AMC Manager is the free new APP for managing the panels, available for **Apple** and **Android**. With the importing system maps, the user can use the APP in a very easy way, understanding immediately the system functionality with a few taps (arm/disarm in all part, events, trouble, outputs, inputs, etc.). AMC MANAGER works with **K Series, X Series, X64, XR800** control panels.

Features:

- Operation via CLOUD no configurations
- ARM and DISARM in all combinations
- Enable and disable all programmed outs
- Bypass of all zones ready and not ready
- Importing graphics maps of building where is installed the system
- Importing and changing ICON and PHOTO of zones
- Events log
- Multiple installed panels control with 1 APP
- PUSH system for keep data and battery of mobile
- HTTPS data sending (SSL4)
- Guaranteed operation with GPRS - 3G - 4G
- Different sound notification for different events
- App and maps can work in portrait and in landscape

- For **K Series, X Series, X64 and XR800 control panels**
- **Easy to use**
- **No need setting**

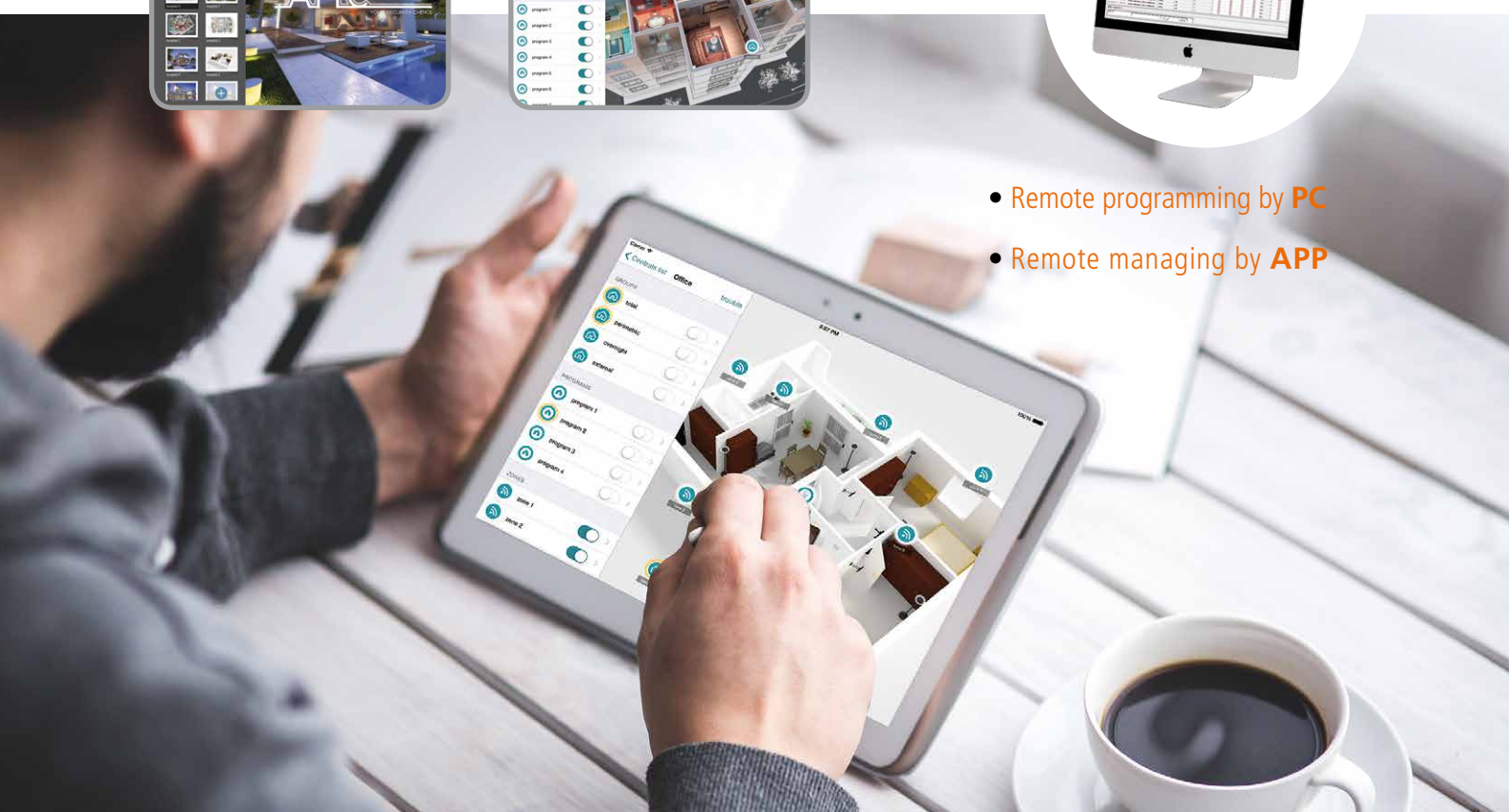
CONTROL PANEL



IP and/or GPRS/3G modules



- Remote programming by **PC**
- Remote managing by **APP**

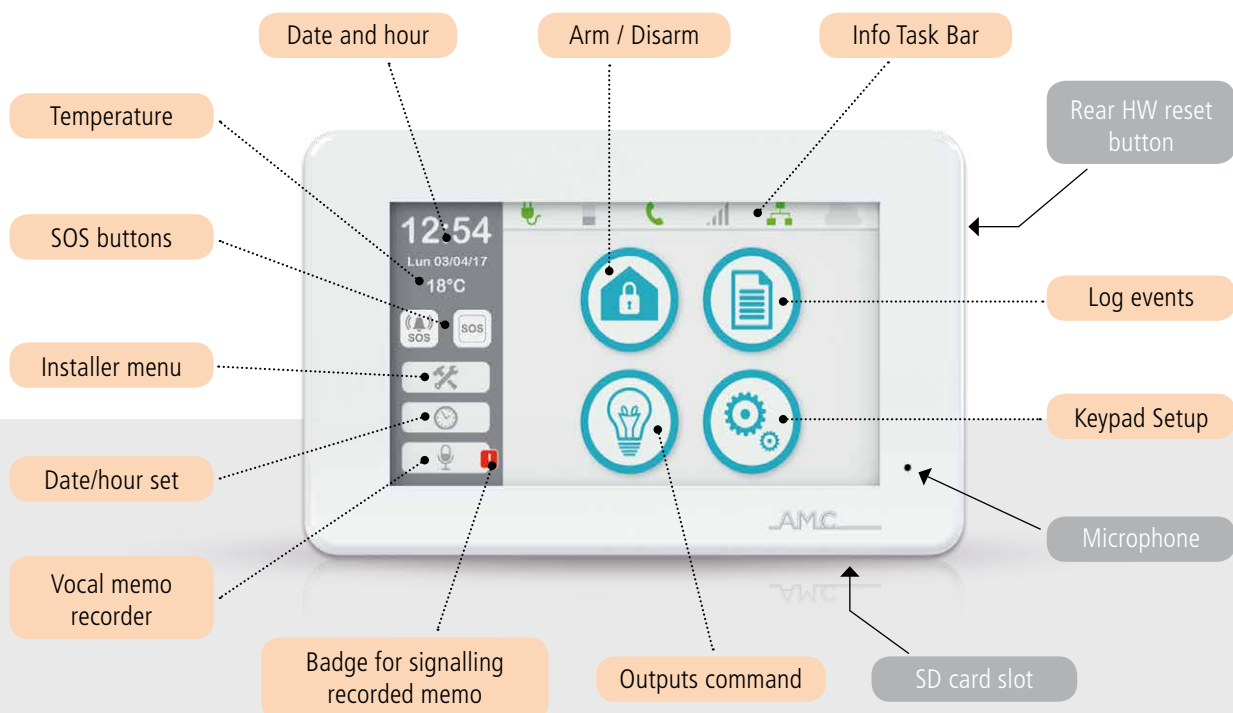
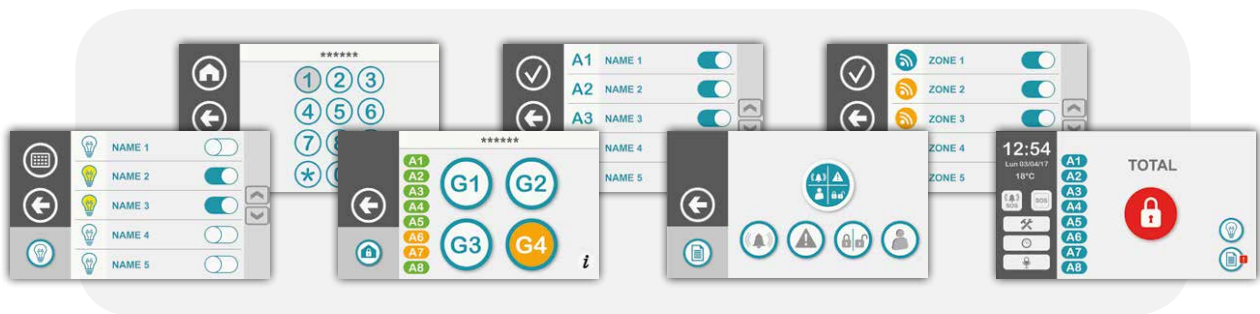


## Unika TOUCHSCREEN KEYPAD

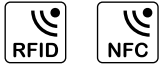


**Unika** is the new AMC touchscreen keypad with 5-inches screen and ABS thin cover. It is equipped with an intuitive graphical interface user friendly. With just few steps you can manage all the functions of the keypad. Large screen and cool design make the Unika keypad a UNIQUE product up to date.

- Display 5 inches TFT high resolution (480 x 272)
- User friendly icons interface
- SD card reader for image loading, FW upgrading
- NFC reader for smartphone recognizing
- Microphone and speaker
- Temperature sensor
- Vocal memo
- Photo frame screensaver
- Thin cover
- Wall installation
- Dimensions: W 155, H 100, D 18 mm



# WIRED SYSTEMS ACCESSORIES



## ■ **Unika** • Touchscreen keypad with RFID/NFC tag reader

Unika is the new entry of AMC, 5 inches touchscreen keypad. Cool and intuitive graphic interface. You can manage all function of panel with few touch. Dimensions: W 155, H 100, D 18 mm



## ■ **K-lcd Blue Tag** • 32 characters lcd keypad with RFID/NFC tag reader

Lcd keypad with RFID/NFC integrated tag reader. Backlight liquid crystal display 32 characters on two lines. Two configurable lines as inputs and/or outputs; 3 signalling LEDs. Protective front door. Programmable keys for quick commands. Dimensions: W 135, H 116, D 24 mm

# NEW



## ■ **K-lcd Blue** • 32 characters lcd keypad

Backlight liquid crystal display 32 characters on two lines. Two configurable lines as inputs and/or outputs; 3 signalling LEDs. Protective front door. Programmable keys for quick commands. Dimensions: W 135, H 116, D 24 mm



## ■ **K-lcd Light Plus** • 32 characters lcd keypad

Backlight liquid crystal display 32 characters on two lines. Two configurable lines as inputs and/or outputs; 3 signalling LEDs. Protective front door. Programmable keys for quick commands. Dimensions: W 86, H 114, D 23 mm



## ■ **K-lcd Light** • 32 characters lcd keypad

Backlight liquid crystal display 32 characters on two lines - 3 signalling LEDs. Protective front door. Programmable keys for quick commands. - Dimensions: W 86, H 114, D 23 mm



## ■ **K-lcd** • 32 characters lcd keypad

Backlight 32 characters liquid crystal display on two lines - 3 signalling LEDs. Protective front door. Dimensions: W 140, H 120, D 35 mm



## ■ **K-lcd Voice** • 32 characters lcd keypad with integrated audio support

32 characters on two lines backlight LCD display - 3 signalling LEDs. Protection Cover and built-in speaker. Dimensions: W 140, H 120, D 35 mm

**868 MHz** ■ **K-radio800**

**916 MHz** ■ **K-radio900**

### 32 characters lcd keypad with an integrated radio receiver

It's a keypad with an integrated radio receiver on serial bus with the ability to store 32 two-way radio devices of different types: remote controls, detectors, smoke detectors, inertial etc. Thanks to 128-bit AES encryption (Advanced Encryption Standard) ensures maximum protection against attempts of cloning or masking signal. The power of transmission of the radio signals from the various devices is managed and limited by control panel to a sufficient value, thus increasing the average life of the batteries. The communication between the control panel and devices is bidirectional for each type of transmission which must be confirmed by the receiver, allowing to obtain the maximum safety concerning the outcome of communication and to avoid congestion of the radio signals. The operations of installation and maintenance are made easier by the total lack of switches and potentiometers hardware; all devices are configurable by the control panel. The learning mode of the devices can be automatic by means of self-learning by the control panel or manually by means of coding of each individual device. Dimensions: W 135, H 116, D 24 mm

Order Codes:

**K-radio800:** 868 MHz

**K-radio900:** 916 MHz



**433 MHz** ■ **K-radio**

### 32 characters lcd keypad with an integrated radio receiver

It's a keypad with an integrated radio receiver on serial bus with the ability to store 32 wireless devices. It can be used as a radio expansion or as a radio repeater. It allows to store the same radio component in several devices without malfunction. This allows use of remote controls or detectors in big spaces without having problems of radio range. Dimensions: W 140, H 120, D 35 mm

Order Code:

**K-radio:** 433 MHz



**868 MHz** ■ **Expr800**

**916 MHz** ■ **Expr900**

### Radio expansion

It's a radio receiver on serial bus with the ability to store 32 two-way radio devices of different types: remote controls, detectors, smoke detectors, inertial etc. Thanks to 128-bit AES encryption (Advanced Encryption Standard) ensures maximum protection against attempts of cloning or masking signal. The power of transmission of the radio signals from the various devices is managed and limited by control panel to a sufficient value, thus increasing the average life of the batteries. The communication between the control panel and devices is bidirectional for each type of transmission which must be confirmed by the receiver, allowing to obtain the maximum safety concerning the outcome of communication and to avoid congestion of the radio signals. The operations of installation and maintenance are made easier by the total lack of switches and potentiometers hardware; all devices are configurable by the control panel. The learning mode of the devices can be automatic by means of self-learning by the control panel or manually by means of coding of each individual device.

Order Codes:

**Expr800:** 868 MHz

**Expr900:** 916 MHz



**433 MHz** ■ **Expr/s**

### Radio expansion

It's a radio receiver on serial bus with the ability to store 32 wireless devices of different types: remote controls, detectors, smoke sensors, inertial, etc. It allows to store the same radio component in several devices without malfunction. This allows used of remote controls or detectors in big spaces without having problems of radio range.

Order Code:

**Expr/s:** 433 MHz



NEW

## ■ KX-PB • Transponder



Proximity device for arm, disarm and partial arm the control panel. To use with KX-TAG and KX-KEY. Available colours: white  
Dimensions: W 80, H 135, D 28 mm

NEW

## ■ KX-PS • Transponder



Device for civil series with 1 unit. Four signalling leds for system status and control. To use with KX-TAG and KX-KEY. Dimensions: W 30, H 20, D 50 mm

NEW

## ■ KX-TAG



Badge with RFID tag, for arm and disarm the control panel. To use with KX-PB, KX-PS and UNIKA touchscreen keypad. Dimensions: 85 x 54 mm

NEW

## ■ KX-KEY



Keychains in ABS black, IP68, with RFID tag for arm and disarm the control panel. To use with KX-PB, KX-PS and UNIKA touchscreen keypad. Dimensions: 60 x 25 x 6 mm



## ■ KX-in • Board expansion

KX-in is a 8 zones expansion module with auto protection tamper box.



## ■ KX-out • Board expansion

KX-out is a 3 relay outputs expansion module with auto protection tamper box.



## ■ IP1

**IP module** for connection panel to Internet/Cloud. CMS messages, cloud service, app management, remote programming.



## ■ XGPRS

**GPRS module** for communication (850/900/1800/1900 MHz). Voice call, SMS, CMS messages, cloud service, app management, remote programming.



## ■ X3E

**GPRS module** for communication (900/1800 MHz).  
**3G module** for communication (900/2100 MHz).  
Voice call, SMS, CMS messages, cloud service, app management, remote programming.

NEW



## ■ X3A

**GPRS module** for communication (850/900/1800/1900 MHz).  
**3G module** for communication (850/1900 MHz)  
Voice call, SMS, CMS messages, cloud service, app management, remote programming.

NEW



## ■ COM/USB • USB adapter

COM/USB is an adapter for programming control panels.

**800 Series** . 868 MHz

**900 Series** . 916 MHz

**NEW**

**NEW**



■ **K-lcd W 800 / K-lcd W 900** • 32 characters lcd wireless keypad

Wireless keypad with backlight liquid crystal display; 32 characters on two lines; 3 signalling LEDs. Protective front door. Programmable keys for quick commands.

Dimensions: W 135, H 116, D 24 mm

Order Codes:

**K-LCDW800:** 868 MHz

**K-LCDW900:** 916 MHz

**NEW**



■ **CM800mini / CM900mini** • Extra Small magnetic contact

It's a very small device; it has 2 completely separable and partitionable configurable inputs: an internal REED and a clamped input for an external generic contact. It communicates with the control panel by a bidirectional digital radio transmission channel to avoid signal collisions or band saturation and ensure high stability and precision. The 128 bit AES encryption code guarantee an high security. It's provided with anti-opening protection. It's also supervised (automatic life test). The standard lithium-ions battery allows a very long duration. Available colours: white, dark brown - Dimensions: W 25, H 50, D 17 mm

Order Codes:

**CM800mini:** 868 MHz, white colour

**CM900mini:** 916 MHz, white colour

**CM800mini-M:** 868 MHz, dark brown colour

**CM900mini-M:** 916 MHz, dark brown colour



■ **CM800 / CM900** • Small magnetic contact

It's a small device; it has 2 completely separable and partitionable configurable inputs: an internal REED and a clamped input for an external generic contact. It communicates with the control panel by a bidirectional digital radio transmission channel to avoid signal collisions or band saturation and ensure high stability and precision. The 128 bit AES encryption code guarantee an high security. It's provided with anti-opening protection. It's also supervised (automatic life test). The standard lithium-ions battery allows a very long duration. Available colours: white, dark brown - Dimensions: W 37, H 78, D 21 mm

Order Codes:

**CM800:** 868 MHz, white colour

**CM900:** 916 MHz, white colour

**CM800-M:** 868 MHz, dark brown colour

**CM900-M:** 916 MHz, dark brown colour



■ **CU800 / CU900** • Magnetic contact

It's a 3 completely separable and partitionable configurable inputs: an internal REED, a clamped input for an external generic contact, a clamped input for fast contacts (rolling shutter, glass brake) with adjustable sensibility. It communicates with the control panel by a bidirectional digital radio transmission channel to avoid signal collisions or band saturation and ensure high stability and precision. The 128 bit AES encryption code guarantee an high security. It's provided with anti-opening protection. It's also supervised (automatic life test). The standard lithium-ions battery allows a very long duration.

Available colours: white, dark brown - Dimensions: W 37, H 130, D 27 mm

Order Codes:

**CU800:** 868 MHz, white colour

**CU900:** 916 MHz, white colour

**CU800-M:** 868 MHz, dark brown colour

**CU900-M:** 916 MHz, dark brown colour

**800 Series** . 868 MHz

**900 Series** . 916 MHz

**NEW**



## ■ **IF800 / IF900** • Volumetric detector

It's a 15 mt range infrared wireless detector with more than 90° angular range thanks to its 31 beam lens. It communicates with the control panel by a bidirectional digital radio transmission channel to avoid signal collisions or band saturation and ensure high stability and precision. The 128 bit AES encryption code guarantee a high security. It's provided with an anti-opening tamper protection. It's also supervised (automatic life test). The standard lithium-ions battery allows a very long duration.

Available colours: white - Dimensions: W 60, H 110, D 46 mm

Order Codes:

**IF800:** 868 MHz, white colour

**IF900:** 916 MHz, white colour

## ■ **IF800/P / IF900/P** • Volumetric detector pet immune

Like IF800 / IF900 but available pet immunity up to 15 kg.

Order Codes:

**IF800/P:** 868 MHz, pet immune, white colour

**IF900/P:** 916 MHz, pet immune, white colour



## ■ **IF800/T / IF900/T** • Curtain effect detector

It's a wireless infrared detector, with an adjustable range from 1 mt up to 5 mt, designed to realize a "curtain shape" protection barrier useful for doors and windows or everywhere is necessary to detect a movement that happens in only one direction. The 128 bit AES encryption code guarantee a high security. It's provided with an anti-opening tamper protection. It's also supervised (automatic life test). The standard lithium-ions battery allows a very long duration.

Available colours: white, dark brown - Dimensions: W 130, H 37, D 37 mm

Order Codes:

**IF800/T:** 868 MHz, white colour

**IF900/T:** 916 MHz, white colour

**IF800/T-M:** 868 MHz, dark brown colour

**IF900/T-M:** 916 MHz, dark brown colour



## ■ **SS800 / SS900** • Radio seismic detector

It's a small device; it has 2 completely separable and partitionable configurable inputs: an internal micro seismic detector and a clamped input for an external generic contact. It communicates with the control panel by a bidirectional digital radio transmission channel to avoid signal collisions or band saturation and ensure high stability and precision. The 128 bit AES encryption code guarantee a high security. It's provided with anti-opening protection. It's also supervised (automatic life test). The standard lithium-ions battery allows a very long duration. Available colours: white, dark brown - Dimensions: W 37, H 78, D 21 mm

Order Codes:

**SS800:** 868 MHz, white colour

**SS900:** 916 MHz, white colour

**SS800-M:** 868 MHz, dark brown colour

**SS900-M:** 916 MHz, dark brown colour



### TR800 / TR900 • Pocket remote control

Programmable 5 channels radio remote controller. It communicates with the control panel by a bidirectional digital radio transmission channel to avoid signal collisions or band saturation and ensure high stability and precision. Also this allows you to have a carryover of system status or of any equipment that is managed remotely. The 128 bit AES encryption code guarantee an high security. The standard lithium-ions battery allows a very long duration. Dimensions: W 42, H 58, D 13 mm

Order Codes:

**TR800-WG:** 868 MHz, white with grey keys

**TR800-GW:** 868 MHz, grey with white keys

**TR800-BG:** 868 MHz, black with grey keys

**TR900-WG:** 916 MHz, white with grey keys

**TR900-GW:** 916 MHz, grey with white keys

**TR900-BG:** 916 MHz, black with grey keys



### SF800 / SF900 • Smoke detector

It's a stand-alone wireless smoke detector designed for protection small areas. It's an optical smoke detector that uses the Tyndall effect to verify the presence of combustion particles in the air. In particular, reveals cold smoke and visible (with the combustion particles sized between 0,3  $\mu\text{m}$  and 2  $\mu\text{m}$ ). It's equipped with a 9-volt battery and emits a modulated sound, compatible with the evacuation signal when it detects smoke. It communicates with the control panel by a bidirectional digital radio transmission channel to avoid signal collisions or band saturation and ensure high stability and precision. The 128 bit AES encryption code guarantee an high security. It's also supervised (automatic life test). The standard lithium-ions battery allows a very long duration. Available colour: white - Dimensions:  $\varnothing$  120, H 55 mm

Order Codes:

**SF800:** 868 MHz, white colour

**SF900:** 916 MHz, white colour



### Soutdoor800 / Soutdoor900 • Wireless outdoor detector

It's a low consumption outdoor double PIR detector, pet immune. It is usable with 800/900 series wireless system. It's a full digital detector (with 2 digital PIR), with an analysis system devoid of the classical noise that occur with the use of traditional analog PIR. Through the use of fully digital PIR detector is protected from white light masking and has much higher efficiency in the discrimination in its action range. Even with the significant temperature variations, the digital temperature compensation system guarantees a high efficiency. It has a range of 15 mt, with an opening angle of 90°. Available colour: white

Order Codes:

**Soutdoor800:** 868 MHz, white colour

**Soutdoor900:** 916 MHz, white colour



### SRL800 / SRL900 • Wireless siren

It's a two-way supervised wireless siren with wireless control. The 128 bit AES encryption code guarantee an high security; autolearning programming, internal antenna with high efficiency; internal battery back-up 7.2V 700mAh Ni-MH batteries. Low consumption wide range of external power supply with 10V to 15V, 150mA max. Antiopening and back tamperers; high efficiency LED light. Possibility to activate one or more functions directly by keypad: memory alarm sound, alarm memory, sound for arm/disarm, visual system status for arm/disarm & stand-by LED to indicate any proper operation. Need 12 V power supply.

Order Codes:

**SRL800:** 868 MHz, white cover, red light

**SRL800-WW:** 868 MHz, white cover, white light

**SRL800-WB:** 868 MHz, white cover, blue light

**SRL900:** 916 MHz, white cover, red light

**SRL900-WW:** 916 MHz, white cover, white light

**SRL900-WB:** 916 MHz, white cover, blue light

## 400 Series . 433 MHz K Series & X Series



### ■ **CM400** • Small magnetic contact

Small devices; it has 2 completely separable and partitionable configurable inputs: an internal REED and a clamped input for an external generic contact. It use a 3 different channels FSK digital radio transmission to avoid signal collisions or band saturation and ensure high stability and precision. The 112 bit Rolling Code guarantee an high security. It's provided with anti-opening and anti-removal protection. It's also supervised (automatic life test). The CR2 standard lithium-ions battery allows a very long duration.

Available colours: white, dark brown - Dimensions: W 37, H 78, D 21 mm

Order Codes:

**CM400:** 433 MHz, white colour

**CM400-M:** 433 MHz, dark brown colour



### ■ **CU400** • Magnetic contact

It's a 3 completely separable and partitionable configurable inputs: an internal REED, a clamped input for an external generic contact, a clamped input for fast contacts (rolling shutter, glass brake) with adjustable sensibility. It use a 3 different channels FSK digital radio transmission to avoid signal collisions or band saturation and ensure high stability and precision. The 112 bit Rolling Code guarantee an high security. It's provided with anti-opening and anti-removal protection. It's also supervised (automatic life test). The CR2 standard lithium-ions battery allows a very long duration.

Available colours: white, dark brown - Dimensions: W 37, H 130, D 27 mm

Order Codes:

**CU400:** 433 MHz, white colour

**CU400-M:** 433 MHz, dark brown colour



### ■ **IF400** • Volumetric detector

It's a 15 mt range infrared wireless detector with more than 90° angular range thanks to its 31 beam lens. It use a 3 different channels FSK digital radio transmission to avoid signal collisions or band saturation and ensure high stability and precision. The 112 bit Rolling Code guarantee an high security. It's provided with an anti-opening tamper protection. It's also supervised (automatic life test). The CR2 standard lithium-ions battery allows a very long duration. Available colour: white - Dimensions: W 60, H 110, D 46 mm

Order Code:

**IF400:** 433 MHz, white colour

### ■ **IF400/P** • Volumetric detector

Like IF400 but available pet immunity up to 15 kg.

Order Code:

**IF400/P:** 433 MHz, pet immune, white colour



### ■ **IF400/T** • Curtain effect detector

It's a multiband wireless infrared detector, with an adjustable range from 1 mt up to 5 mt, designed to realize a "curtain shape" protection barrier useful for doors and windows or everywhere is necessary to detect a movement that happens in only one direction. It use a 3 different channels FSK digital radio transmission to avoid signal collisions or band saturation and ensure high stability and precision. The 112 bit Rolling Code guarantee an high security. It's provided with an anti-opening tamper protection. It's also supervised (automatic life test). The CR2 standard lithium-ions battery allows a very long duration.

Available colours: white, dark brown - Dimensions: W 145, H 37, D 30 mm

Order Codes:

**IF400/T:** 433 MHz, white colour

**IF400/T-M:** 433 MHz, dark brown colour



### TR400 • Pocket remote control

TR400 is a 5 programmable channels radio remote controller. It use a 3 different channels FSK digital radio transmission to avoid signal collisions or band saturation and ensure high stability and precision. The 112 bit Rolling Code guarantee an high security. The CR2025 standard lithium-ions battery allows a very long duration. Available colour: black - Dimensions: W 39, H 71, D 6 mm

Order Code:

**TR400:** 433 MHz, black colour



### SS400 • Radio seismic detector

SS400 is a radio seismic detector that detects any type of vibration, it has an internal accelerometer that can detect vibrations due to glass breakage, or other types of break-ins. The sensitivity is adjustable so it can be used in any situation, it also has a reed contact that can be used separately. It use a 3 different channels FSK digital radio transmission to avoid signal collisions or band saturation and ensure high stability and precision. The 112 bit Rolling Code guarantee an high security. It's provided with anti-opening and anti-removal protection. It's also supervised (automatic life test).

Available colours: white, dark brown - Dimensions: W 37, H 78, D 21 mm

Order Codes:

**SS400:** 433 MHz, white colour

**SS400-M:** 433 MHz, dark brown colour



### Soutdoor/BC • Low consumption outdoor detector

Soutdoor/BC is a low consumption outdoor detector. It is usable with all types of radio transmitters, due to the very low consumption, 9uA ensures a long battery life of the radio devices connected. It has a very low threshold operation, 2.55Vcc. It's a full digital detector (with digital PIR), with an analysis system devoid of the classical noise that occur with the use of traditional analog PIR. Through the use of fully digital PIR detector is protected from white light masking and has much higher efficiency in the discrimination in its action range. Even with the significant temperature variations, the digital temperature compensation system guarantees a high efficiency. It has a range of 15 mt, with an opening angle of 90° and it's Pet immune up to 15 kg. Available colours: white

Order Code:

**Soutdoor/BC:** white colour

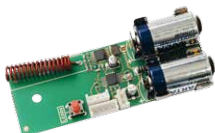


### SF400 • Smoke detector

SF400 is a stand-alone wireless smoke detector designed for protection small areas. SF400 is an optical smoke detector that uses the Tyndall effect to verify the presence of combustion particles in the air. In particular, reveals cold smoke and visible (with the combustion particles sized between 0,3 µm and 2 µm). It's equipped with a 9-volt battery and emits a modulated sound, compatible with the evacuation signal when it detects smoke. The device contains all the characteristics of our radio systems, supervised system with digital transmission and FSK modulation on three different radio channels to avoid signal collision or saturation of bandwidth ensuring high stability and precision, while the 112-bit Rolling Code provides high security. Available colours: white - Dimensions: Ø 120, H 55 mm

Order Code:

**SF400:** 433 MHz, white colour



### IF-X • Universal transmitter

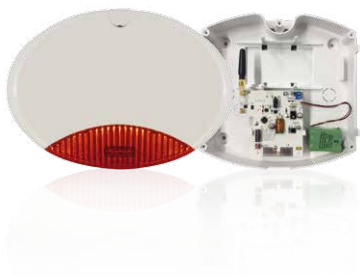
Universal transmitter for low consumption detectors.

Order Code:

**IF-X:** 433 MHz

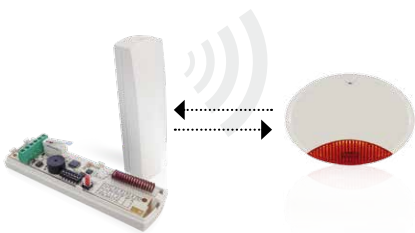
## 400 Series . 433 MHz K Series & X Series

### ■ SRL400 • Wireless Siren



SRL400 is a two-way supervised wireless siren with wireless control. FSK digital radio communications in triple-frequency (433.27 MHz, 433.92 MHz, 434.57 MHz) anti-collision. Radio own protocol in rolling-code 112 bit; auto-learning programming, internal antenna with high efficiency; internal battery back-up 7.2V 700mAh Ni-MH batteries. Low consumption wide range of external power supply with 10V to 15V, 150mA max. Antiopening and back tamper; high efficiency LED light. Possibility to activate one or more functions by DIP Switches as: memory alarm sound, alarm memory, sound for arm/disarm, visual system status for arm/disarm & stand-by LED to indicate any proper operation. Need 12 V power supply.

### ■ CS400 • Radio Interface (device for SRL400 and keypad)



CS400 is a universal transmitter for the two-way supervised siren SRL400. Its main features are: digital radio communications in FSK triple frequency (433.27 MHz, 433.92 MHz, 434.57 MHz) anti-collision; radio own protocol in rolling-code 112 bit, auto-learning programming, antenna, power supply 12V; input for siren alarm signal with dual polarity; input for audio and visual reports (system status); OC output NC/NO type for tamper signalling; OC output NC/NO type for siren problems (no charging, battery, communication problems); buzzer and LEDs for real time status of the transmitter and the siren plus antiopening Tamper.

### ■ MIX400 • Universal Radio Interface (radio receiver)

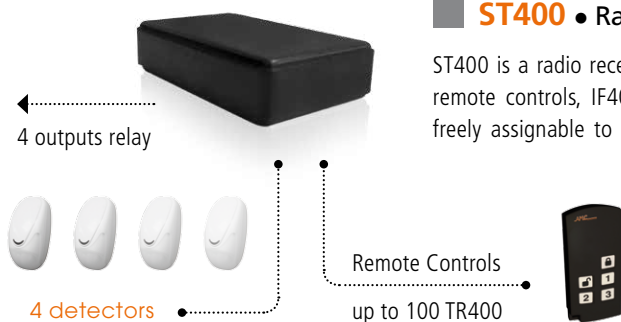


8 solid state relay outputs

up to 48 detectors

MIX400 is a 48 channel universal wireless receiver, memorizable and free assignable on 8 solid state relay outputs. The system is able to receive radio signals on the whole available bandwidth (from 433.22 to 434.62). In fact every device transmits at the same time on different frequencies to avoid radio collisions (overlapping of the signals transmitted contemporaneously from the various memorized devices). The radio circuit is realized with Quartz CHIPS that ensures an absolute time stability. The FSK digital radio transmission with 112 bit rolling code. MIX400 is a completely configurable interface; it's possible to assign any single input of any device to any output of the interface. It's possible to organize the outputs in activation's groups; in this way the system is suitable also with control panels that haven't partitions. It's equipped with Radio Range Monitoring, Battery Status, Supervision and Radio Noise Monitoring systems. Available colours: white - Dimensions: W 173, H 115, D 30 mm

### ■ ST400 • Radio Interface (radio receiver)



4 outputs relay

4 detectors

Remote Controls  
up to 100 TR400

ST400 is a radio receiver with 4 relay outputs, working with series 400 devices (TR400 remote controls, IF400 detectors, CU400 contacts, and so on). The relay outputs are freely assignable to the remote controls or stored devices. Possibility of linking up to 4 radio devices, or up to 100 remote controls. Digital radio transmission (FSK) 112-bit variable code (rolling code) for high security with high stability and accuracy, on 3 radio channels to avoid collisions and possible saturation of the signal. Dual power supply with 12Vdc or 24Vac/24Vdc JUMPER selection.

## Soutdoor

### Soutdoor/T

TRIPLE TECHNOLOGY  
EN 50131-2-4 / GRADE 2 / CLASS 4

**Soutdoor/T** is an outdoor detector, that can be used for all external installations. It can be programmed by PC software, for these reason it is very efficient and complete for any particular installation (in garden with a lot of plants, animals, sun, and other sources that cause false alarms). It has maximum endurance, thanks to high protection grade. You have also the possibility to change cover, with different lens, so Soutdoor/T is suggested for all types of installation (near wall for door and windows protection, in places reach of vegetables or in presence of animals).

- Outdoor detector programmable by PC software:
  1. Complete programming of all detector's function
  2. Graphic visualization of each technology coverage
  3. Possibility of consulting the last events, memorized by detector
  4. Possibility of configuring the outputs
  5. Possibility of configuring 4 PRESET working, based on requirements
  6. Possibility of configuring pre-alarms, using one or more detector's technologies
- Range from 3 mt to 15 mt
- Internal memory events, to verify which technology has generated alarm
- Detector with three technologies (2 PIR, 1 microwave)
- Cover with different lens, depending on the type of installation (volumetric, curtain vertical/horizontal)
- PET immunity adjustable with different weight
- Double anti-masking with active IR
- Back tamper, and anti-opening with microswitch
- Tamper anti-inclination with accelerometer when it is used with bracket
- 3 outputs relé free to be used for alarm functions, masking and blinding
- Input of block detector (exclusion microwave when the system is disarmed)
- Trimmer coverage regulation in the function stand alone
- Led two-colour Red and Green
- N° 6 Dip switches to setup functions:  
AND OR AUTO OR MULTIMPULSE PRESET, that you can set up by pc  
(4 separate preset)

BRACKET SN3



SETTABLE by PC



Pet Immunity



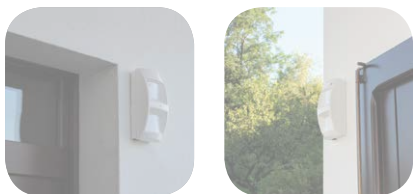
AntiMasking

# OUTDOOR DETECTORS

## Soutdoor/L

DUAL DIGITAL PIR

**Soutdoor/L** is a dual digital PIR detector, with an analysis system that takes into account the two most important changes that may occur during a movement: the speed and the intensity. With the simultaneous comparison of these two information, the detector is able to discriminate repetitive movements from intrusion, lowering the percentage of false alarms. With high thermal variations, the totally digital temperature compensation system, guarantees a great performance. Has 12 mt max coverage, with angle of 90°. With usable different type of lens it is possible use the detector in different situation, related to the height positioning, and the type of protection required, as curtain protection etc.



## Soutdoor/BC

LOW CONSUMPTION

**Soutdoor/BC** is a low consumption outdoor detector. It is usable with all types of radio transmitters, due to the very low consumption, 9uA ensures a long battery life of the radio devices connected. It has a very low threshold operation, 2.55Vdc. It's a full digital detector (with digital PIR), with an analysis system devoid of the classical noise that occur with the use of traditional analog PIR. Through the use of fully digital PIR detector is protected from white light masking and has much higher efficiency in the discrimination in its action range. Even with the significant temperature variations, the digital temperature compensation system guarantees a high efficiency. It has a range of 15 mt, with an opening angle of 90°.

Functional features:

- Double PIR detector with AND function (AND time 4")
- Range from 6 mt to 12 mt
- Alarm Led
- Double pulse function
- Interchangeable fresnel lenses
- Bracket
- Free alarm contact solid state relay (NO, NC)
- Tamper contact solid state relay (NO e NC)



Pet Immunity

Functional features:

- Double PIR detector with AND function (AND time 4")
- Range from 3 mt to 15 mt
- Alarm Led
- Alarm Buzzer
- Test function
- Stand by mode for battery saving
- Double pulse function
- Interchangeable fresnel lenses
- Bracket
- Free alarm contact solid state relay (NO, NC)
- Tamper contact solid state relay (NO e NC)

Technical features:

- Power supply: from 3 V to 9 V
- Stand-by consumption: 9 uA
- Alarm consumption: 5 mA

Technical features:

- Power supply: from 10.5V to 15V
- Stand-by consumption: 14 uA
- Alarm consumption: 25 mA



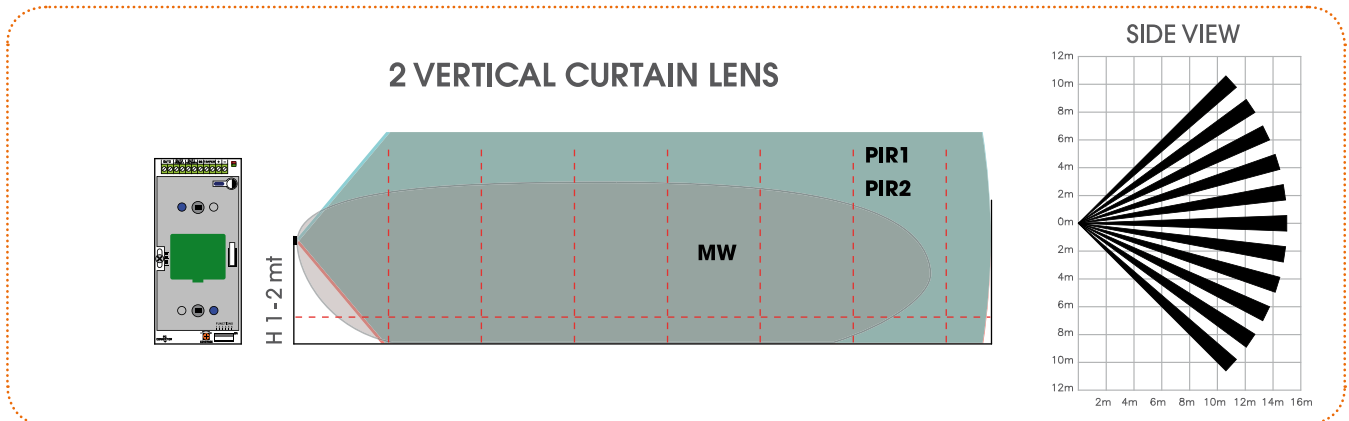
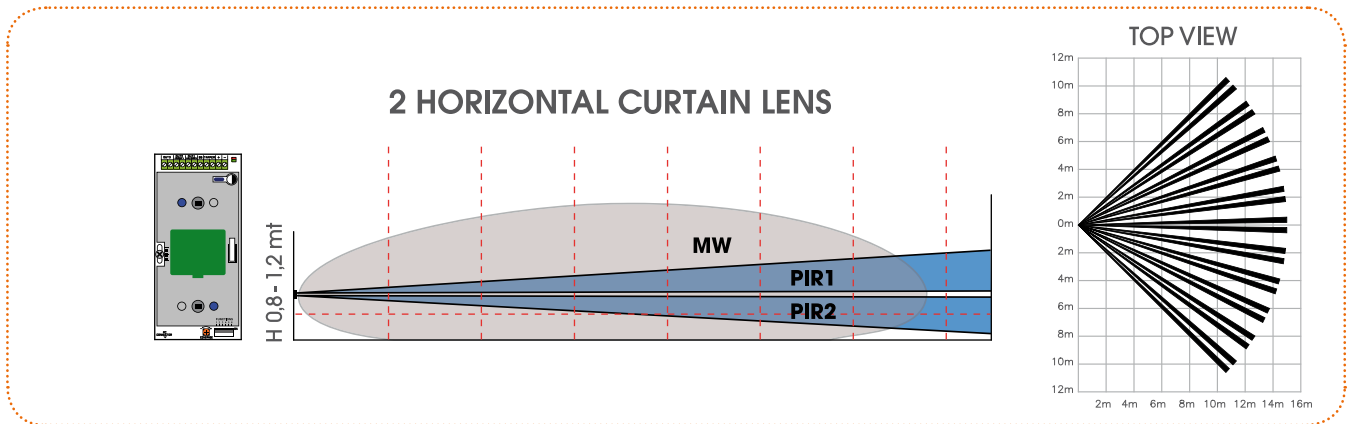
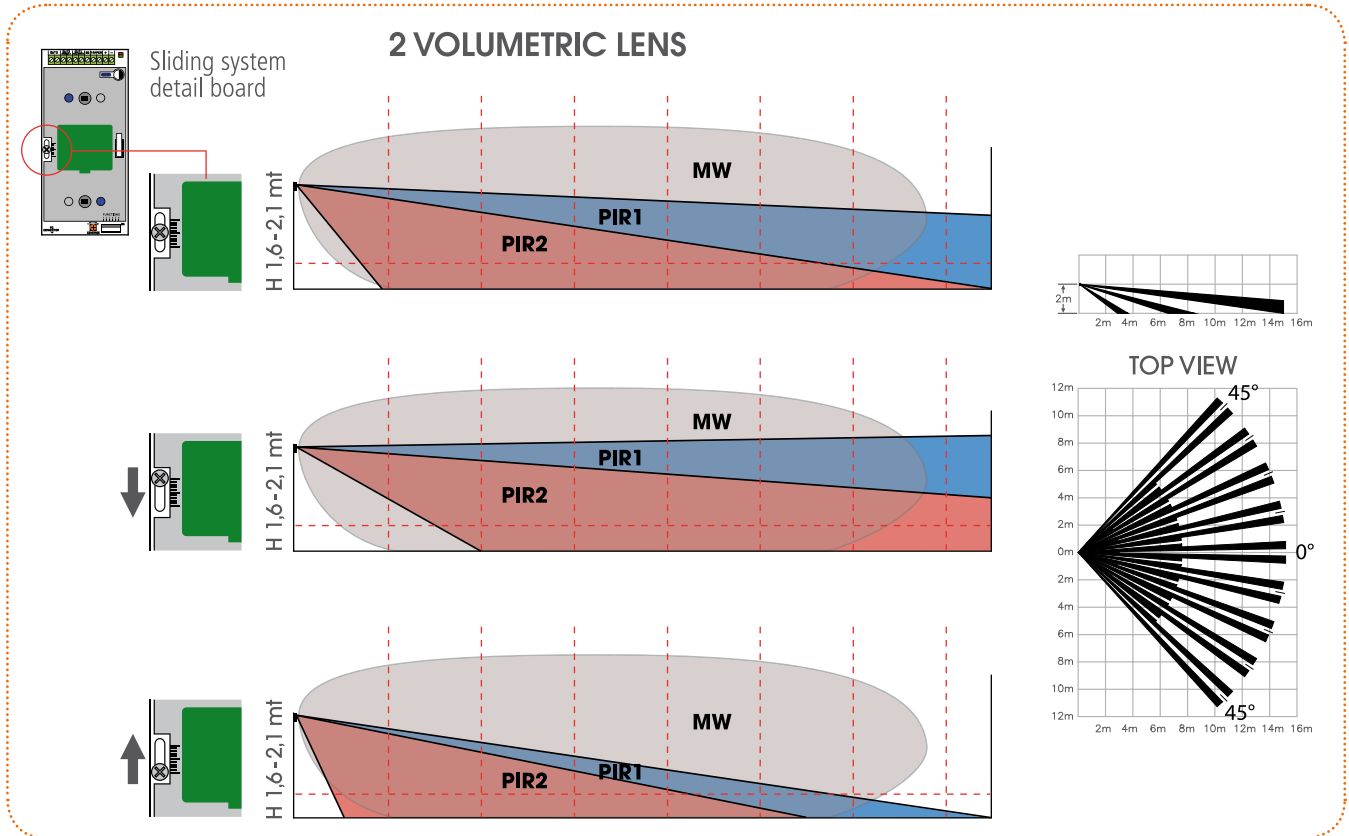
Pet Immunity

### BRACKET SN3



# SOUTDOOR

gives the possibility of changing and combining different kinds of lens for any specific requirement



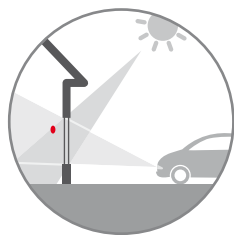
## DUAL TECHNOLOGY

# Promask

EN 50131-2-4 / GRADE 2



AntiMasking

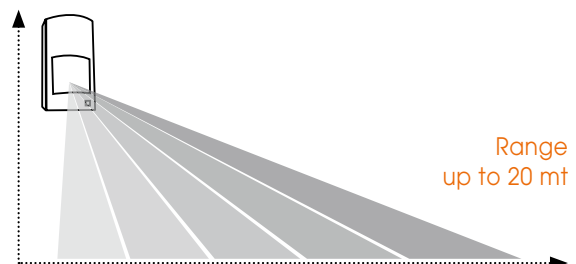


RFI/white light digital filter protection

Accelerometer

Infrared digital analysis

Technical Features	
	PROMASK
EN 50131-2-4 / GRADE 2	YES
RANGE	20 mt
ANGLE	90°
LENS	Fresnel
MICROWAVE FREQUENCY	9.3 - 9.9 - 10.5 Ghz
MICROWAVE EMITTED POWER	10 mW impuls
ALARM TIME	2''
ALARM TYPE	AND - OR - AUTO OR
WALK TEST'S LED (MW & PIR)	YES
ANTIOPENING TAMPER	YES
BACK TAMPER	with accelerometer
ALARM CONTACT	100 mA - 40 V - 2.5 - 16 Ω
PULSE COUNTER	YES
RFI PROTECTION	30 V/m
TEMPERATURE COMPENSATION	YES
DIGITAL ANALYSIS	YES
BRACKET AVAILABLE	YES
POWER SUPPLY	13.8 Vdc
CONSUMPTION	32 mA
HOUSING	ABS
OPERATING TEMPERATURE	from -10°C to +40°C
DIMENSIONS	130 x 65 x 40 mm



**Promask** is the first born of a new generation of high-end digital detectors DT from AMC, indeed the functional features and multiple updates allows this detector to be on of the best products on the market.

Some updates:

- **ANTIMASKING** active on both technologies
- **NOISE REDUCTION** function for installation problems in terms of noise
- Activation and deactivation of the **MICROWAVE EMISSION** according to system status
- Internal/built in **ACCELEROMETER**, with position recognition, vertical and horizontal, with tamper, removing, mechanical shocks and orientation notifications with no need of any connection to the wall.

Available colours: white

**BRACKET SN2**  
(wall bracket)



# Smile

EN 50131-2-2 / GRADE 2



Pet Immunity

**BRACKET SN2**  
(wall bracket)



**BRACKET SN4**  
(wall / ceiling bracket)



## Smile19 - Smile19/P

EN 50131-2-2 / GRADE 2

Digital PIR

PET IMMUNE up to 15 kg (Smile 19/P)

## Smile20 - Smile20/P

EN 50131-2-2 / GRADE 2

Digital PIR with internal EOL resistors

PET IMMUNE up to 15 kg (Smile 20/P)

**10 YEARS**  
warranty

## Smile21 - Smile21/P

CONFORM TO EN 50131

Digital PIR

Automatic system for coverage regulation

PET IMMUNE up to 15 kg (Smile 21/P)

## Smile22 - Smile22/P

CONFORM TO EN 50131

Digital PIR with internal EOL resistors

Automatic system for coverage regulation

PET IMMUNE up to 15 kg (Smile 22/P)



Detectors with an analysis system that takes into account the two most important changes that may occur during a movement: the speed and the intensity. With the simultaneous comparison of these two information, the detectors are able to discriminate repetitive movements from intrusion, lowering the percentage of false alarms. With high thermal variations, the totally digital temperature compensation system, guarantees a great performance. They have 15 mt coverage, with angle of 90°. With the special lens are equipped of creep zone. **Available colours:** white

Technical Features				
	SMILE 19 SMILE 19/P	SMILE 20 SMILE 20/P	SMILE 21 SMILE 21/P	SMILE 22 SMILE 22/P
EN 50131-2-2 / GRADE 2	YES	YES	conform	conform
RANGE	15 mt	15 mt	15 mt	15 mt
ANGLE	90°	90°	90°	90°
ALARM TIME	2''	2''	2''	2''
WALK TEST'S LED	YES	YES	YES	YES
SOLID STATE RELAY	YES	YES	YES	YES
RELAY ALARM / RELAY TAMPER	1	1	2	2
INTERNAL EOL RESISTORS	-	1K, 2k2, 4k7, 5k6, 8k2	-	1K, 2k2, 4k7, 5k6, 8k2
CREEP ZONE	YES	YES	YES	YES
ANTIOPENING TAMPER	YES	YES	YES	YES
PULSE COUNTER	YES	YES	YES	YES
RFI PROTECTION	30 V/m	30 V/m	30 V/m	30 V/m
TEMPERATURE COMPENSATION	YES	YES	YES	YES
DIGITAL ANALYSIS	YES	YES	YES	YES
BRACKET AVAILABLE	YES	YES	YES	YES
POWER SUPPLY	13.8 Vdc	13.8 Vdc	13.8 Vdc	13.8 Vdc
CONSUMPTION	12 mA	12 mA	12 mA	12 mA
HOUSING	ABS	ABS	ABS	ABS
PET IMMUNITY	Smile 19/P	Smile 20/P	Smile 21/P	Smile 22/P
OPERATING TEMPERATURE	from -10°C to +40°C			
DIMENSIONS	110 x 60 x 46 mm			

## DUAL TECHNOLOGY

# Mouse

EN 50131-2-4



Pet Immunity



AntiMasking

**BRACKET SN2**  
(wall bracket)



**BRACKET SN4**  
(wall / ceiling bracket)



## Mouse02 - Mouse02/P

EN 50131-2-4 **GRADE 3**

Dual Technology ANTI-MASKING detector with EOL resistors

PET IMMUNE up to 15 kg (Mouse 02/P)

Dual technology detectors with an analysis system that takes into account the two most important changes that may occur during a movement: the speed and the intensity. With the simultaneous comparison of these two information, the detectors are able to discriminate repetitive movements from intrusion, lowering the percentage of false alarms. With high thermal variations, the totally digital temperature compensation system, guarantees a great performance. Are equipped with internal EOL resistors. They have 15 mt coverage, with angle of 90°. With the special lens are equipped of creep zone.

**Available colours:** white



## Mouse09 - Mouse09/P

EN 50131-2-4 / GRADE 2

Dual Technology detector with EOL resistors

PET IMMUNE up to 15 kg (Mouse 09/P)

Technical Features				
	MOUSE 02	MOUSE 09	MOUSE 02/P	MOUSE 09/P
EN 50131-2-4 / GRADE 2	-	YES	-	YES
EN 50131-2-4 / GRADE 3	YES	-	YES	-
RANGE	15 mt	15 mt	15 mt	15 mt
ANGLE	90°	90°	90°	90°
ALARM TIME	2"	2"	2"	2"
SELF TEST	YES	-	YES	-
WALK TEST'S LED	YES	YES	YES	YES
MICROWAVE FREQUENCY	9.3 - 9.9 - 10.5 Ghz			
SOLID STATE RELAY	YES	YES	YES	YES
INTERNAL EOL RESISTORS	1K, 2k2, 4k7, 5k6, 8k2			
CREEP ZONE	YES	YES	YES	YES
ANTIOPENING TAMPER	YES	YES	YES	YES
ANTIMASKING DEVICE	YES	-	YES	-
PULSE COUNTER	YES	YES	YES	YES
RFI PROTECTION	30 V/m	30 V/m	30 V/m	30 V/m
TEMPERATURE COMPENSATION	YES	YES	YES	YES
DIGITAL ANALYSIS	YES	YES	YES	YES
BRACKET AVAILABLE	YES	YES	YES	YES
POWER SUPPLY	13.8 Vdc	13.8 Vdc	13.8 Vdc	13.8 Vdc
CONSUMPTION	23 mA	23 mA	23 mA	23 mA
HOUSING	ABS	ABS	ABS	ABS
PET IMMUNITY	-	-	YES	YES
OPERATING TEMPERATURE	from -10°C to +40°C			
DIMENSIONS	110 x 60 x 46 mm			

## DUAL TECHNOLOGY

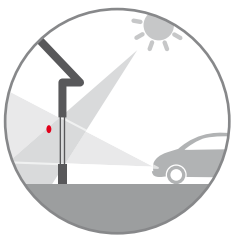
# MouseGS

CONFORM TO EN 50131



Technical Features		
	MOUSE GS	MOUSE GS/P
POWER SUPPLY	13.8 Vdc	13.8 Vdc
CONSUMPTION	23 mA	23 mA
RANGE PIR	3 - 15 mt	3 - 15 mt
RANGE MICROPHONE	10 mt	10 mt
ANGLE	90°	90°
ALARM TIME	2"	2"
WALK TEST'S LED	YES	YES
CREEP ZONE	YES	YES
ANTIOPENING TAMPER	YES	YES
RFI PROTECTION	30 V/m	30 V/m
TEMPERATURE COMPENSATION	YES	YES
DIGITAL ANALYSIS	YES	YES
BRACKET AVAILABLE	YES	YES
HOUSING	ABS	ABS
PET IMMUNITY	-	YES
OPERATING TEMPERATURE	from -10°C to +40°C	from -10°C to +40°C
DIMENSIONS	110 x 60 x 46 mm	110 x 60 x 46 mm

Dual technology analysis  
MICROPHONE and PIR



White light digital filter protection



RFI digital protection



Simplified assembly without screws

## MouseGS - MouseGS/P



PIR and microphone glass break detector  
PET IMMUNE up to 15 kg (Mouse GS/P)

Pet Immunity

It's a dual technology detector consists of a PIR and a microphone for the notification of shock and glass breakage. It has independent settings and separate outputs for the PIR and the microphone section. It has a maximum range of 10 mt for the microphone section, and approximately 15 mt for the infrared. You can adjust the microphone section only for glass breakage, or for shock and glass breakage. It has the ability to have different filterings to accentuate or less the efficiency in detecting breakages/damage. Pet immune up to 15 kg (Mouse GS/P).

Available colours: white

BRACKET SN2  
(wall bracket)



BRACKET SN4  
(wall / ceiling bracket)



## GS1

CONFORM TO EN 50131

10 YEARS  
warranty



Technical Features	
	GS1
POWER SUPPLY	13.8 Vdc
CONSUMPTION	15 mA
RANGE MICROPHONE	8 mt
ALARM TIME	2''
ANTIOPENING TAMPER	YES
RFI PROTECTION	30 V/m
DIGITAL ANALYSIS	YES
HOUSING	ABS
OPERATING TEMPERATURE	from -10°C to +40°C
DIMENSIONS	37 x 78 x 21 mm

**GS1** is a microphone glass break detector. It is equipped with filters that allow to determinate different types of glass breakage. It has a range of about 8 meters, and can be installed in any position without compromising efficiency. **Available colours:** white, dark brown  
**Order Codes:**

**GS1:** white colour      **GS1-M:** dark brown colour

# SEISMIC DETECTOR

## SS14

DIGITAL DETECTOR WITH  
ACCELEROMETER TECHNOLOGY

10 YEARS  
warranty



Technical Features	
	SS14
POWER SUPPLY	13.8 Vdc
CONSUMPTION	23 mA
ALARM TIME	2''
ANTIOPENING TAMPER	YES
RFI PROTECTION	30 V/m
DIGITAL ANALYSIS	YES
HOUSING	ABS
OPERATING TEMPERATURE	from -10°C to +40°C
DIMENSIONS	37 x 78 x 21 mm

**SS14** is a vibration/inertial detector designed for the protection of windows, cabinets, fixtures, and so on. It has a high-precision vibration sensor, which allows to determine the type of shock and/or vibration caused by an attempt to break through or forcing a frame. It is not necessary to use pulse analysis boards since everything is processed within the sensor itself. It is equipped with 2 channels, contact REED and INERTIAL / FLIP. **Available colours:** white, dark brown

**Order Codes:**

**SS14:** white colour      **SS14-M:** dark brown colour

## DT16 - IF16/L - IF16/T

### DT16

EN 50131-2-4 / GRADE 2  
Dual Technology



**DT16** is a dual technology detector, infrared and microwave at 10 GHz suitable for creating a type of protection "curtain" for doors and windows. It has the back tamper, the antiopening tamper device, a signalling LED with its disabling jumper. It has alarm direction recognition.

**Order Codes:**

**DT16:** white colour    **DT16-M:** dark brown colour

### IF16/T

EN 50131-2-2 / GRADE 2  
Passive infrared



**IF16/T** is an infrared detector, able to create a protective "curtain" barrier for doors and windows. It has an adjustable range between 3 mt and 5 mt and has delay system activation.

**Order Codes:**

**IF16/T:** white colour    **IF16/T-M:** dark brown colour

### IF16/L

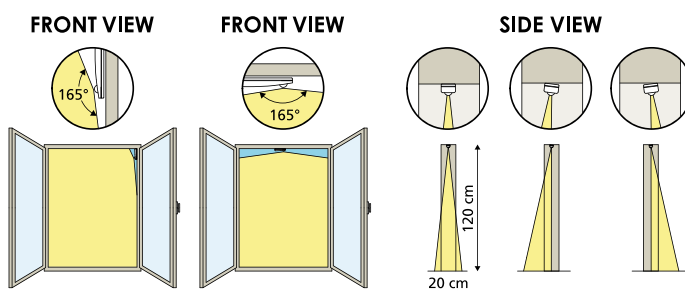
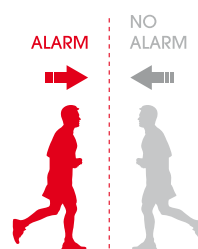
EN 50131-2-2 / GRADE 2  
Passive infrared, with high power LED



**IF16/L** is an infrared detector, able to create a protective "curtain" barrier for doors and windows. It has an adjustable range between 3 mt and 5 mt and has some special features which make it very interesting as:

- led high light output for lighting function and/or alarm
- alarm direction recognition
- buzzer with different sounds depending on the direction of the movement
- delay system activation

**Order Code: IF16/L:** white colour

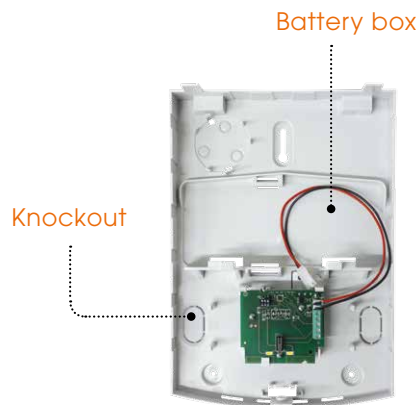


Technical Features			
	DT16	IF16/L	IF16/T
EN 50131-2-4 / GRADE 2	YES	-	-
EN 50131-2-2 / GRADE 2	-	YES	YES
RANGE	from 3 to 5 mt	from 3 to 5 mt	from 3 to 5 mt
ANGLE	165°	165°	165°
CURTAIN LENS ORIENTATION	YES	YES	YES
ALARM TIME	4''	4''	4''
PROGRAMMABLE ALARM DELAY	-	YES	YES
HIGH POWER LED FOR LIGHTING AND/OR ALARM	-	YES	-
WALK TEST'S LED	YES	YES	YES
DOUBLE SOUND BUZZER (ENTRANCE/EXIT)	-	YES	-
ANTIOPENING TAMPER	YES	YES	YES
RFI PROTECTION	30 V/m	30 V/m	30 V/m
TEMPERATURE COMPENSATION	YES	YES	YES
POWER SUPPLY	10 - 15 Vdc	10 - 15 Vdc	10 - 15 Vdc
CONSUMPTION IN STAND BY	18 mA	12 mA	12 mA
HOUSING	ABS	ABS	ABS
OPERATING TEMPERATURE	from -25°C to +55°C		
DIMENSIONS	37 x 130 x 37 mm		



# BLADE

EN 50131-4 / GRADE 2



**Blade** is a self powered siren, elegant and cool design, suitable for all installations need. This product is entirely made of polycarbonate. All models are equipped with anti-opening and back tamper switches; the sound power is given by piezoelectric buzzer.

**Available Case colours:** white / red

**Available Flash colours:** red / white / blue

**Dimensions:** W 210, H 295, D 70 mm

Technical Features			
	BLADE 01	BLADE 01 / S	BLADE 24
EN 50131-4 / GRADE 2	YES	-	-
SOUND POWER	100 dB at 1mt 85 dB at 3mt	100 dB at 1mt 85 dB at 3mt	100 dB at 1mt 85 dB at 3mt
WATCHDOG'S LED	YES	YES	YES
SYSTEM STATUS VISUALIZATION	-	YES	YES
ALARM'S MEMORY	-	YES	YES
SEPARATED TRIGGERS	-	YES	YES
WORKING WITHOUT BATTERY	-	YES	YES
ANTIOPENING TAMPER	YES	YES	YES
BACK TAMPER	YES	YES	YES
POWER SUPPLY	13.8 Vdc	13.8 Vdc	24 V

**ORDER CODES:**

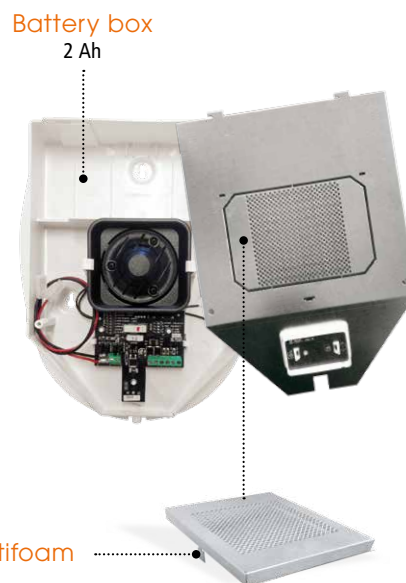
**BLADE01:** white cover, red light  
**BLADE01-WW:** white cover, white light  
**BLADE01-WB:** white cover, blue light

**BLADE01/S:** white cover, red light  
**BLADE01/S-WW:** white cover, white light  
**BLADE01/S-WB:** white cover, blue light

**BLADE24:** red cover, red light  
**BLADE24-RW:** red cover, white light  
**BLADE24-RB:** red cover, blue light

## SR Series

EN 50131-4 / GRADE 2



**SR Series** sirens are available in 2 different versions: SR136 and SR135 FIRE / 24 V. Outdoor sirens are auto-supplied, with 2Ah battery's housing. All models are equipped with anti-opening and back tamper switches.

**Available Case Colours:** white / silver / red

**Available Flash Colours:** orange / red / blue

**Dimensions:** W 220, H 280, D 100 mm

Technical Features		
	SR136	SR135 FIRE / 24 V
EN 50131 - 4 / GRADE 2	YES	-
IMQ APPROVAL	YES	-
SOUND POWER	100 dB at 1 mt / 85 dB at 3 mt	100 dB at 1 mt / 85 dB at 3 mt
LED LAMP	YES	-
WATCHDOG'S LED	YES	-
SYSTEM STATUS VISUALIZATION	YES	-
SYSTEM STATUS SOUND SIGNALLING	YES	-
ALARM'S MEMORY	YES	-
SEPARATED TRIGGERS	YES	-
SOUND TYPE MODIFICATION	YES	-
ANTIOPENING TAMPER	YES	YES
BACK TAMPER	YES	YES
ANTIFOAM PROTECTION	optional	-
POWER SUPPLY	13.8 Vdc	24 V

### ORDER CODES:

**SR136:** white cover, orange light  
**SR136-WR:** white cover, red light  
**SR136-WB:** white cover, blue light

**SR136-SO:** silver cover, orange light  
**SR136-SR:** silver cover, red light  
**SR136-SB:** silver cover, blue light

**SR135FIRE/24V:** red cover, red light  
**SR135FIRE/24V-RO:** red cover, orange light  
**SR135FIRE/24V-RB:** red cover, blue light

## Iside

EN 50131-4 / GRADE 2



**Iside** is an auto supplied siren with an innovative design, suitable for all installations need. The Elliptical Shape allows to fix it in any position, vertical or horizontal, without the need to modify the functionality and the shape. The flat surface permits a simple and visible siren customization. This product is entirely made of polycarbonate. All versions are equipped with anti-opening and back tamper switches; the sound power utilises a piezoelectric technology, ensuring a low consumption level during triggering period.

**Available Case colours:** white / red

**Available Flash colours:** orange / blue / red

**Dimensions:** W 320, H 220, D 55 mm

Technical Features			
	ISIDE 130	ISIDE 140	ISIDE 140 / 24 V
EN 50131 - 4 / GRADE 2	-	YES	-
SOUND POWER	100dB at 1mt / 85dB at 3mt	100dB at 1mt / 85dB at 3mt	100dB at 1mt / 85dB at 3mt
BATTERY CHECK	-	YES	YES
LAMP CHECK	-	YES	YES
WATCHDOG'S LED	YES	YES	YES
SYSTEM STATUS VISUALIZATION	-	YES	YES
SYSTEM STATUS SOUND SIGNALLING	-	YES	YES
ALARM'S MEMORY	-	YES	YES
SEPARATED TRIGGERS	-	YES	YES
ANTIOPENING TAMPER	YES	YES	YES
BACK TAMPER	YES	YES	YES
POWER SUPPLY	13.8 Vdc	13.8 Vdc	24 V

### ORDER CODES:

**ISIDE130:** white cover, orange light  
**ISIDE130-WR:** white cover, red light  
**ISIDE130-WB:** white cover, blue light

**ISIDE140:** white cover, orange light  
**ISIDE140-WR:** white cover, red light  
**ISIDE140-WB:** white cover, blue light

**ISIDE140/24V:** red cover, red light  
**ISIDE140/24V-RO:** red cover, orange light  
**ISIDE140/24V-RB:** red cover, blue light

## 24V Sirens



Technical Features			
	BLADE 24	SR 135 FIRE / 24 V	ISIDE 140 / 24 V
<b>SOUND POWER</b>	100dB at 1mt / 85dB at 3mt	100dB at 1mt / 85dB at 3mt	100dB at 1mt / 85dB at 3mt
<b>BATTERY CHECK</b>	-	-	YES
<b>LAMP CHECK</b>	-	-	YES
<b>WATCHDOG'S LED</b>	YES	-	YES
<b>SYSTEM STATUS VISUALIZATION</b>	YES	-	YES
<b>SYSTEM STATUS SOUND SIGNALLING</b>	YES	-	YES
<b>ALARM'S MEMORY</b>	YES	-	YES
<b>SEPARATED TRIGGERS</b>	YES	-	YES
<b>ANTIOPENING TAMPER</b>	YES	YES	YES
<b>BACK TAMPER</b>	YES	YES	YES
<b>POWER SUPPLY</b>	24 V	24 V	24 V

### ORDER CODES:

**BLADE24:** red cover, red light

**BLADE24-RW:** red cover, white light

**BLADE24-RB:** red cover, blue light

**SR135FIRE/24V:** red cover, red light

**SR135FIRE/24V-RO:** red cover, orange light

**SR135FIRE/24V-RB:** red cover, blue light

**ISIDE140/24V:** red cover, red light

**ISIDE140/24V-RO:** red cover, orange light

**ISIDE140/24V-RB:** red cover, blue light

## INDOOR SIREN

### PZ2



**PZ2** is an indoor, bitonal, piezoelectric siren, suitable for all installations. This product is entirely made of ABS. It's equipped with anti-opening and back tamper switches.

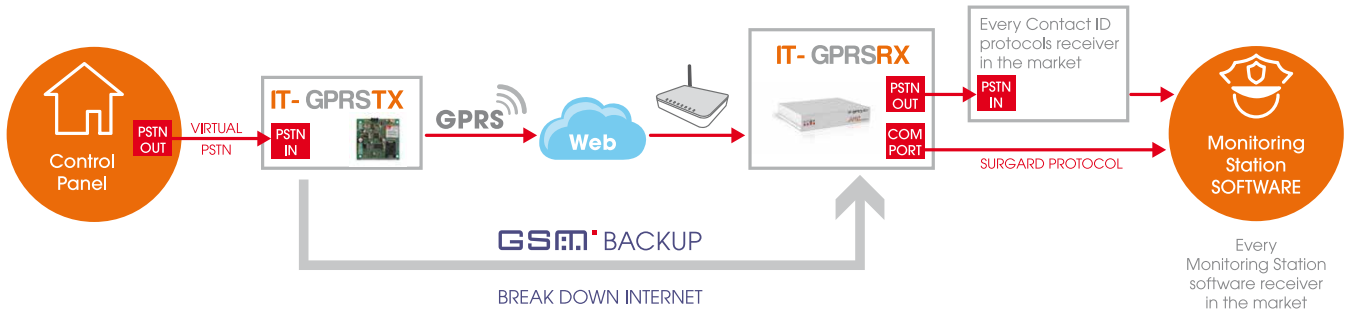
**Available Case colour:** white

**Dimensions:** W 135, H 95, D 45 mm

Technical Features	
	PZ2
<b>SOUND POWER</b>	108 dB at 1mt
<b>ANTIOPENING TAMPER</b>	YES
<b>BACK TAMPER</b>	YES
<b>POWER SUPPLY</b>	12 Vdc

## FOR CONTACT ID PROTOCOLS

# IT-GPRS



### IT-GPRSTX

UNIVERSAL GPRS TRANSMITTER FOR CONTACT ID PROTOCOLS



Universal GPRS transmitter for Contact ID protocols

- PC software for setup transmission parameters
- PSTN line in emulation
- backup GSM in case of break down internet line
- 2 IP addresses
- 1 output open collector (for communication error)

### IT-GPRSRX

INTERNET RECEIVER FOR CONTACT ID PROTOCOLS



Internet receiver for Contact ID protocols

- PC software for setup for internal parameters
- 1 COM port with surgard protocol (to use with every monitoring station software receiver)
- PSTN line out emulation (to use with every monitoring station receiver)
- backup GSM in case of break down internet line
- 2 IP addresses
- synoptic LED panel for work info
- internal backup battery

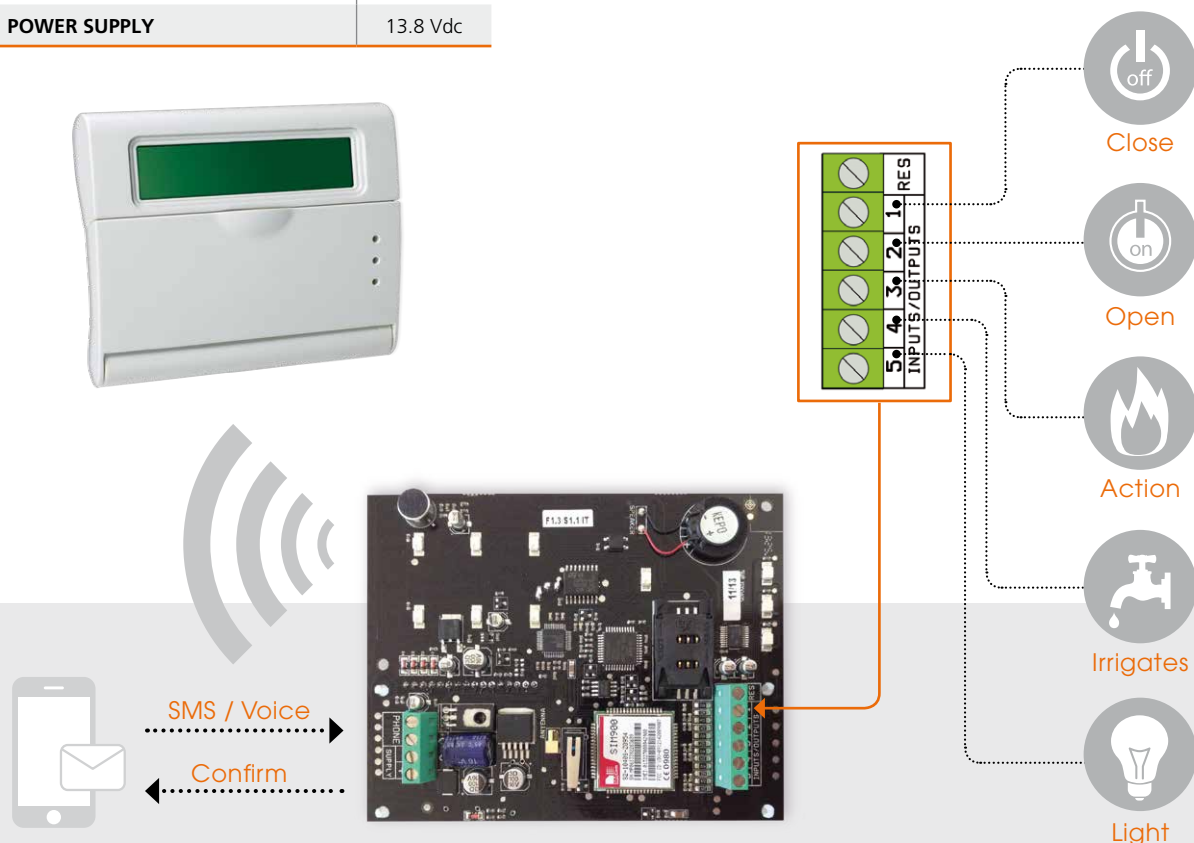
## Voxout

EN 50136 -1-1 / GRADE 2 / ATS 2

Technical Features	
	VOXOUT
EN 50136-1-1 / GRADE 2 / ATS 2	YES
NUMBER OF INPUTS / OUTPUTS	5
TELEPHONE NUMBERS	8
MESSAGE TIME	20"
DTMF DECODING	YES
SMS SENDING	YES
KEYPAD PROGRAMMABLE	YES
VOICE MENU PROGRAMMABLE	YES
SMS PROGRAMMABLE	YES
SIM EXPIRE ADVISE	YES
SIM CREDIT LEFT ADVISE	YES
PSTN LINE SIMULATION	YES
CALLER'S ID RECOGNITION	YES
POWER SUPPLY	13.8 Vdc

**Voxout** is a **GSM** dialler remote-controlled bidirectional 5-lines configurable as inputs and outputs. It has listening environment, the outputs can be managed by voice call, text messages and phone calls with CALLER ID recognition. The phone numbers are freely assignable to voice calls, SMS, digital protocols CONTACT ID.

- 5 terminals that can be programmed as inputs and / or outputs
- **remote listening**
- reset terminal calls
- 12 user codes
- 8 phone numbers can be associated with events and all the rest
- 200 telephone numbers used only for the activation of the outputs from the remote (ring and/or sms)
- 1 technical code
- 1 call reset code
- life test sending
- credit
- ID CONTACT transmission



## FlexSeries

BARRIERS FOR DOORS AND WINDOWS

The active infrared barrier Flex is designed to protect doors and windows. It consists of two elements, transmitter and receiver, which will be installed facing each other. The main feature is the modify position of the optical beam inside of aluminum bar.

- Transmitter and receiver controlled by two microprocessors
- Transmission 5-bit codes each 20-50 ms to avoid masking with fake transmitters
- Optical synchronization
- Control of oblique rays to avoid false alarms due to insects or small objects placed between transmitter and receiver
- Creep zone selectable and adjustable
- Antiopening tamper and back tamper selectable
- Alarm output by means of solid state relay
- LED indication of the reception quality and buzzer verify alignment
- All settings are selectable using dip-switches
- Single optics element height adjustable

**Available colours:** white, dark brown



Technical Features				
	FLEX 500	FLEX 1000	FLEX 1500	FLEX 2000
<b>BEAMS NUMBER</b>	2	4	6	8
<b>CURRENT MAX</b>	from 47 to 68 mA	from 47 to 68 mA	from 47 to 68 mA	from 47 to 68 mA
<b>LENGTH</b>	505 mm	1005 mm	1505 mm	2005 mm
<b>DIMENSIONS</b>	19 x 30 mm	19 x 30 mm	19 x 30 mm	19 x 30 mm
<b>OUTDOOR RANGE</b>	10 mt	10 mt	10 mt	10 mt
<b>INDOOR RANGE</b>	20 mt	20 mt	20 mt	20 mt
<b>ENVIRONMENTAL CERTIFICATE</b>	from -5°C to +55°C	from -5°C to +55°C	from -5°C to +55°C	from -5°C to +55°C
<b>OPERATING ENVIRONMENTAL CONDITIONS</b>	from -30°C to +55°C	from -30°C to +55°C	from -30°C to +55°C	from -30°C to +55°C
<b>CREEP ZONE</b>	YES	YES	YES	YES
<b>ANTIOPENING TAMPER</b>	YES	YES	YES	YES
<b>BACK TAMPER</b>	YES	YES	YES	YES
<b>IP GRADE</b>	IP 55	IP 55	IP 55	IP 55
<b>POWER SUPPLY</b>	11-14 Vdc	11-14 Vdc	11-14 Vdc	11-14 Vdc

### ORDER CODES:

**FLEX500:**

white colour

**FLEX500-M:**

dark brown colour

**FLEX1000:**

white colour

**FLEX1000-M:**

dark brown colour

**FLEX1500:**

white colour

**FLEX1500-M:**

dark brown colour

**FLEX2000:**

white colour

**FLEX2000-M:**

dark brown colour





**Headquarter**

Via Pascoli, 359 - loc. Mirovano  
22040 Alzate Brianza (CO) Italy  
tel. +39 031 63 27 80  
fax +39 031 63 27 81  
info@amcelettronica.com

**Production building**

Via degli Artigiani  
22040 Lurago d'Erba (CO) Italy  
info@amcelettronica.com

[www.amcelettronica.com](http://www.amcelettronica.com)