

## 1/W COLOUR LYNX VIDEO SMILE CITY KIT



**Reference:** 01637

### **New kit Smile LYNX. IP Technology**

Smile LYNX Monitor sets the new paradigm for the video door phone industry in regards to aesthetics and user friendliness. Operation is performed through a 7 inch...

## DESCRIPTION

### **New kit Smile LYNX. IP Technology**

Smile LYNX Monitor sets the new paradigm for the video door phone industry in regards to aesthetics and user friendliness. Operation is performed through a 7 inch capacitive touch screen and four pushbuttons, also with capacitive technology, that allow navigation through a graphic interface conceived for maximum easiness of use.

With Smile Monitor, every detail has been taken care of, from the layout and design of the screen shots and its icons, to the melody ring tones, Fermax put together a team of conceptual designers and trend setters aiming at creating a device that, working on Full IP technology, is powered by high performance and processing capability electronics, constitutes the perfect complement for the most ambitious real estate developments.

## TECHNICAL SPECIFICATIONS

Includes:

1625. 1/W COLOUR LYNX CITY panel. Panel S1: 130x128.

8948. Kit flush box S1: 115x114x45.

1650. SMILE TOUCH LYNX monitor.

1655. SMILE TOUCH LYNX connector.

1617. Switch (4 PoE + 4).

4813. Power supply 12Vdc/2A. DIN6.

**Size of product when packed:** 26,8x33x16 cm

**EAN 13:** 8424299016375

## Included products



### 7" LYNX BASIC SMILE MONITOR WHITE

Ref: 01650

Smile LYNX Monitor sets the new paradigm for the video door phone industry in regards to aesthetics and user friendliness. Operation is performed through...

[+ INFO](#)

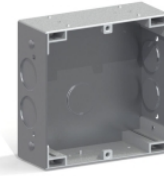


### SMILE LYNX CONNECTOR

Ref: 01655

White SMILE Monitor Connector for LYNX installations

[+ INFO](#)

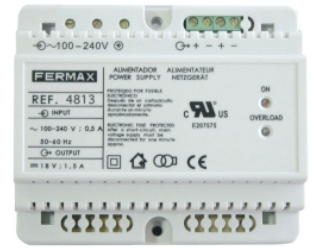


### CITY FLUSH BOX FOR KIT (S1)

Ref: 08948

In order to install a panel it is necessary to place a box in the wall where we will subsequently fix the panel. The flushboxes are manufactured in...

[+ INFO](#)



### P.S.U. DIN6 100-240VAC/12VDC-2A

Ref: 04813

Used to power the different equipment in a Fermax installation.

Constructed in self-extinguishing VO material. Includes a set of covers to protect the...

[+ INFO](#)



### CITY PANEL LYNX COLOUR S1 CP 101

Ref: 01625

Installed at building access points, allows communication with apartments, door release, calls to concierge, etc. Includes COLOR camera with built-in...

[+ INFO](#)



### CISCO LYNX SWITCH (4 PoE + 4)

Ref: 01617

Device for connecting the equipment in the **Fermax TCP/IP Lynx system**. • Easy usage: they are ready to use, installation software and configuration...

[+ INFO](#)