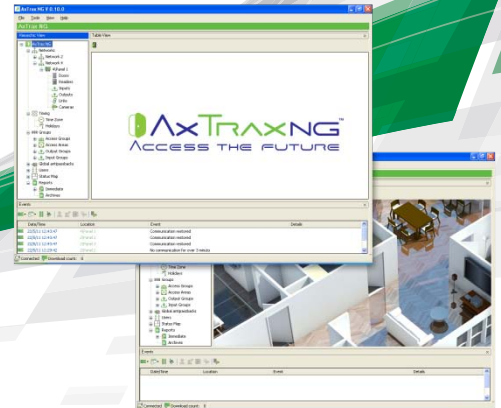


AxTraxNG™

Networked Access Control Management Software



ROSSLARE'S AXTRAXNG™ IS A COMPLETE SERVER-CLIENT SOFTWARE MANAGEMENT SYSTEM ENABLING MANAGEMENT OF MODULAR NETWORKED ACCESS CONTROL PANELS. THE AXTRAXNG™ MANAGEMENT SOFTWARE IS USER-FRIENDLY, INTUITIVE, RELIABLE, AND RICH IN FUNCTIONALITY. USING THE CUTTING-EDGE DEVELOPMENT PLATFORM, YOU CAN INTEGRATE AND DEPLOY VARIOUS SECURITY AND TIME & ATTENDANCE APPLICATIONS WITH EASE.

GENERAL DESCRIPTION

AxTraxNG™ is an intuitive and user-friendly scalable software platform used for system management, including reporting, backup, firmware upgrades, and more.

The AxTraxNG™ application is divided to include both the AxTraxNG™ Server and the AxTraxNG™ Client separately. One AxTraxNG™ Server can control several sites and supplies services to an unlimited number of AxTraxNG™ Clients.

AxTraxNG™ makes it possible to control and monitor every aspect of onsite access control. The software includes a built-in security system that controls accessibility to the system's database, and logs all performed operations.

The AxTraxNG™ enables integration with Rosslare's Video Surveillance software – ViTrax™, as well as many other advanced applications.

MAIN FEATURES

- Cutting-edge development platform
- Easily integrates with security and user management solutions such as T&A, video surveillance, biometric recognition and many more
- Fully integrates with Rosslare's HomeLogix™ HLX-40 wireless intrusion panel
- Password controlled for high level of security
- Compatible with Rosslare's AC-215, AC-225, AC-425, and AC-525 Access control panels
- Advanced Access Group assignment
- Complete Access Monitoring capability
- User-friendly software with intuitive GUI help reduce the complexity of installation
- Manages user data, photo and information fields, access rights, alarms, strike time, and door mode, all from one central location
- Car parking management
- Card database automation for automatic deletion of unused cards
- Produces reports from acquired data, such as usage reports, attendance records, visitors, and roll calls
- Available in multiple languages
- Compatible with additional video management software modules from Rosslare, ViTrax™
- Backward compatibility with VeriTrax™ AS-225 and AxTrax™ AS-525

SPECIFICATIONS

COMPUTER SPECIFICATIONS

■ Operating system	Windows XP SP2, Windows Server 2003, Windows Server 2008, Windows Vista, Windows 7 or windows 8
■ PC requirements	Pentium 4 or higher, 2 GB RAM, CD ROM, 4 GB HDD space, LAN card for TCP/IP networking

DATA BASE FEATURES (DB)

■ DB format	Microsoft SQL Server 2012 Express, password protected
■ DB Backup	Backup now option or clear all now option Complete DB export configuration or by event (selectable backup and restore) Auto file naming for backups Automatic backups
■ DB retention	Programmable period
■ Embedded PDF files	Latest software and hardware manuals

MAIN FEATURES

■ User capacity	30,000 access right users and 30,000 access groups
■ Networks	Unlimited
■ Supported Access Control Panel Models	AC-215 AC-215 (SPV) AC-225 AC-225 with MD-IO84 AC-225 with MD-D02 AC-425 AC-425 with MD-IO84 AC-425 with MD-D04 AC-525 AC-525 with MD-IO84 AC-525 with MD-D02
■ Panel Networks Communication Interface	Serial (RS-232/485), TCP-IP, Modem
■ Communication Speed	9600, 19200, 57600, and 115200 bps
■ Time zones	Up to 32 time zones that can be assigned to Access/Reports/Update
■ Holidays	Up to 64 holiday dates, synchronizes with MS Outlook
■ Supports multiple reader modes	PIN only, PIN and card, PIN or card, card only, Desktop
■ Alarm handler	Advanced event color coding of Tamper/Ajar/Forced/Antipassback/Input Alarm events with confirmation status

ABOUT ROSSLARE SECURITY

Rosslare Security Products, a division of Rosslare Enterprises Ltd., has been manufacturing high-quality security products since 1980. The company's three main lines – Access Control, Intrusion Detection and Guard Patrol – together with a growing product range have transformed Rosslare Security into a major worldwide force in security. Rosslare holds itself to the highest standards of customer service and manufacturing (ISO 9001:2008, ISO 14001:2004, ISO 13485:2003). The company complies with the EU Directive 2002/95/EC on Restriction of Hazardous Substances (RoHS).

www.rosslaresecurity.com

