



The **XP 30** wide range (30m) photocells are designed for embedded and wall mounting and are available in **plastic** or **INOX**.

Both versions are furthermore available with "traditional" relay technology or with BUS 2-Easy technology (only 2 non polarized wired needed for the connections)

Here below the complete range:

Article Number	Description
785105	XP 30 TOP LEVEL PHOTOCELL RELAY 30M
785106	XP 30B TOP LEVEL PHOTOCELL BUS 30M
7851051	XP 30 INOX TOP LEVEL PHOTOCELL RELAY 30M
7851061	XP 30B INOX TOP LEVEL PHOTOCELL BUS 30M

All XP 30 models are classified as **TYPE D (EN 12453)** safety devices.

## DESIGN AND PERFORMANCE



Outstanding compact dimensions, both as footprint on the column/pillar (**only 55x78 mm**) as well as projection (**only 21mm!!!!**). The compact footprint significantly reduces the risk of photocell's damage caused, for example, by vehicles in transit.

XP30, therefore, fit perfectly in any architectural contest whether it is residential, commercial or industrial, always guaranteeing the proper functionality up to a distance, between TX and RX, of **30 m**.

## ROBUST AND UNIQUE



XP30 INOX are **totally metal made** and are the only photocells available on the market with **INOX (AISI 304L)** cover, thus to provide the highest protection in any environmental condition, even the most severe ones, plus a satin finish to add further value to the device.

Thanks to the type of materials as well as to the shape/design and geometries, XP30 INOX guarantee a very high resistance against impacts or vandalism

## NO INTERFERENCES BETWEEN PAIRS OF PHOTOCELLS

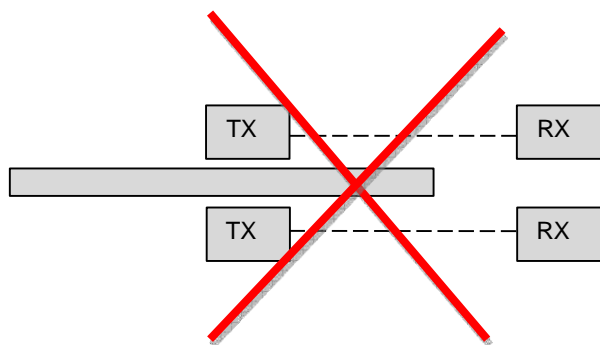
Thanks to the **2easy** **BUS** technology it's possible to wire up to 16 pairs of photocells, to the same control board, regardless the 2 cables polarity and, furthermore, with extremely low power consumption.



Each pair of photocell is "addressed" through dedicated dip-switches.

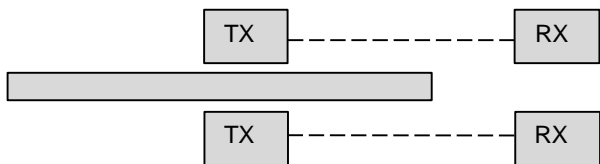
**XP30** with **relay** wiring, unlike all other photocells with traditional relay wiring, are provided with a **channel selection** that, coding the signal, avoid any interference between TX and RX.

It's therefore possible to install up to **4 pairs of XP 30 photocells** with **no need of respecting a minimum distance between each pair of photocell or of "reversing" the TX and RX positions.**



## Traditional photocells – relay wiring

- Reverse TX-RX positions
- Avoid short distance between one pair of photocell and another



## XP30 photocells - relay or BUS wiring

- TX and RX can be placed on the "same side"
- No need to avoid short distance between one pair of photocell and another

The channel selection is simply achieved by pressing a dedicated button on the photocell

In both plastic and INOX versions, the technology applied, can be easily identified just checking the front cover, with no need to open it.



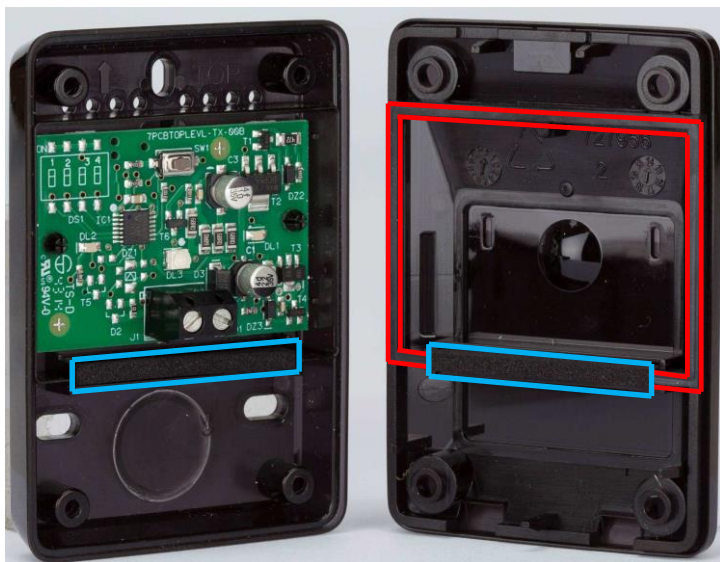
**BUS 2-Easy** versions (logo)

**Relay** versions (without logo)

## NO INTERFERENCES CAUSED BY VEHICLE LED HEADLIGHTS

Thanks to the coded signal (TX-RX) and to the channel selection, **all XP 30 models** are protected against interference that could be caused by external light sources (e.g. LED headlights of some vehicles).

## MAXIMUM PROTECTION



All models are provided with a **co-printed seal** (on the cover) and with a **closed cells seal** on the cable's passage area, thus to always guarantee the maximum protection of the PCB in any weather conditions as well as to avoid the entrance of insects.

Protection Class **IP54**

XP30 photocells are also designed to replace previous Fotoswitch and Photobeam models, not only in already existing installations but also as "type of application"; respectively embedded or wall (with external pipe) mounting.

To help replacement, as well as let you obtain the previously mentioned "types of application", two adaptors have been created:

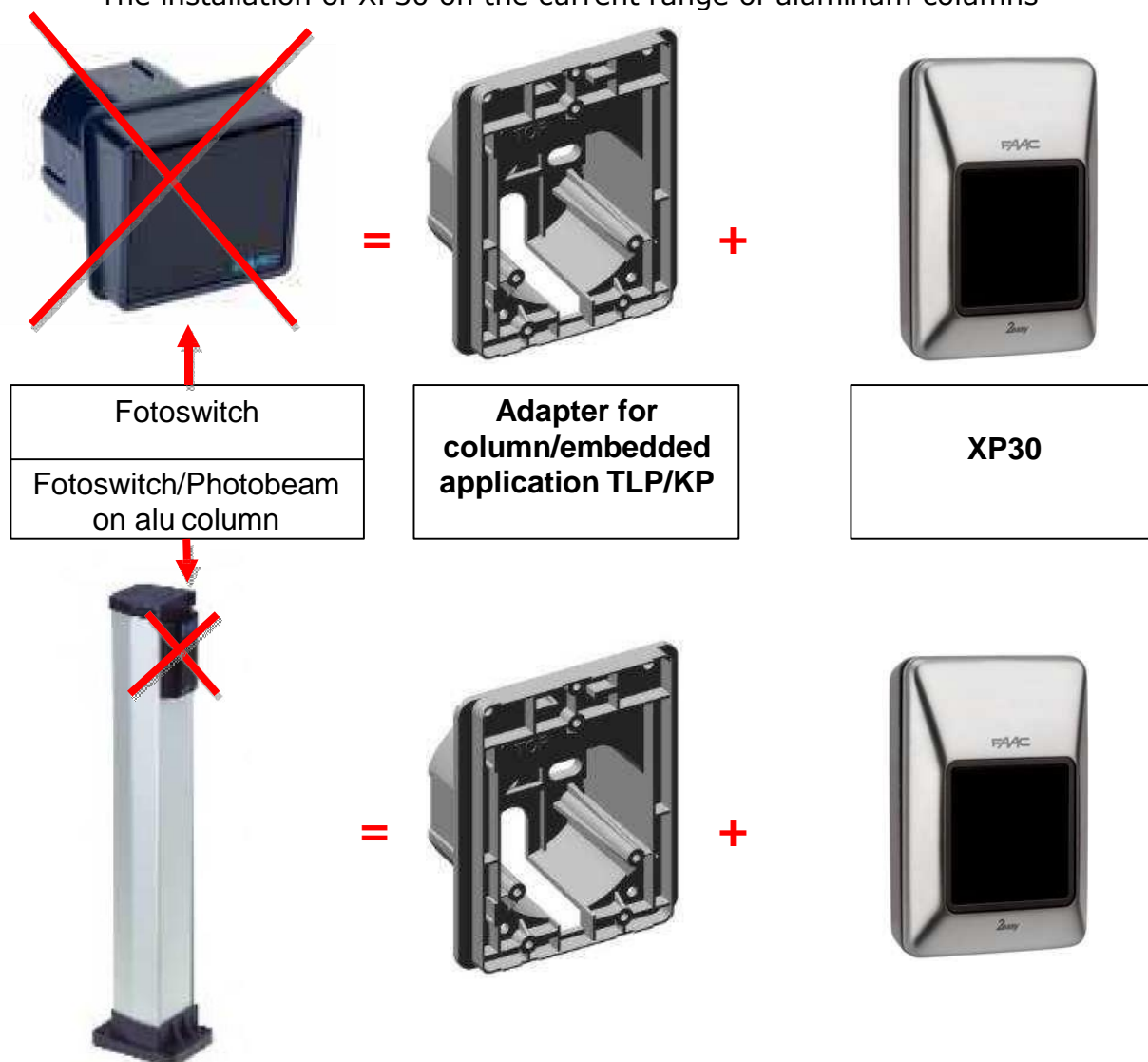
## 1) ADAPTER FOR COLUMN/EMBEDDED APPLICATION TLP/KP

## 2) ADAPTER FOR WALL APPLICATION (WITH EXTERNAL TUBE) TLP/KP

### ADAPTER FOR COLUMN/EMBEDDED APPLICATION TLP/KP

It permits:

- To replace Fotoswitch in existing installations
- To replace Fotoswitch/Photobeam already installed on current aluminum columns
- The mechanical preparation for XP 30 in case of "embedded" application
- The installation of XP30 on the current range of aluminum columns



## ADAPTER FOR WALL APPLICATION (WITH EXTERNAL TUBE) TLP/KP

It permits:

- The replacement of already wall mounted Photobeams (especially when an external rigid/corrugated tube is present)



**XP30 + Adapter for wall application (external tube)**

Mounting holes **100% compatible** with Photobeam holes

Here below Adapter's article numbers:

Article number	Description
401065	ADAPTER FOR COLUMN/EMBEDDED APPLICATION TLP/KP
401064	ADAPTER FOR WALL APPLICATION (WITH EXTERNAL TUBE) TLP/KP

**Attn.** The package includes one adaptor