



**WI-PS310GF**  
**8GE+2SFP 48V Ports PoE Switch**  
**with 8-Port PoE**  
**Data sheet**

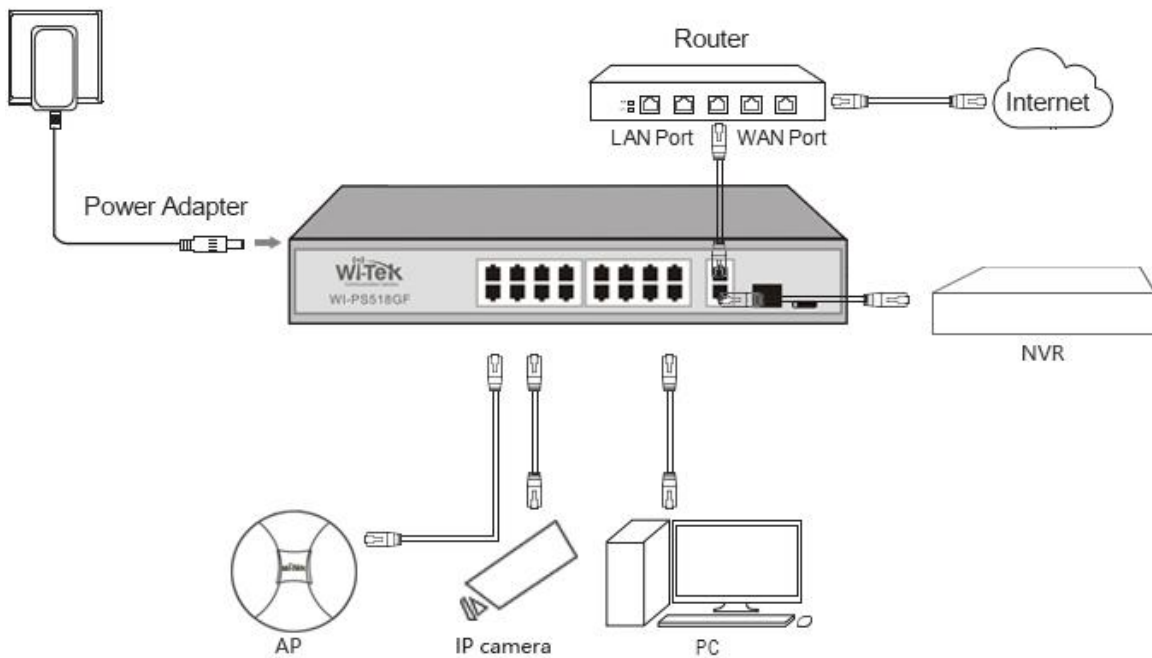
## Highlights

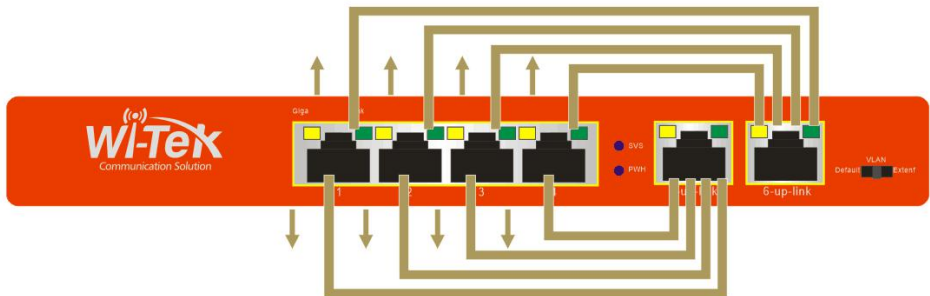
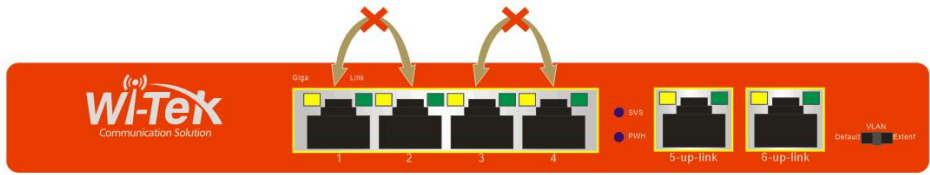
- 8GE+2SFP Full Gigabit Switch with 8 PoE ports
- Supports PoE power up to 30W for each port
- Supports PoE IEEE 802.3af/at compliant PDs
- Internal power adapter supply 150W output power
- Support Port VLAN mode
- LED indicators for LINK/ACT, Power, PoE Status, 100/1000Mbps
- 4K entry MAC address table with auto-learning and auto-aging

## Product



## Typical Applications





## Description

### What This Product Does

8GE+2SFP Port Gigabit Switch with 8-Port PoE provides the seamless network connection. It integrates 1000Mbps Gigabit Ethernet and 10/100Mbps Fast Ethernet network capabilities.

### How This Product Works

8 Auto-Negotiation RJ45 ports (port-1 to port-8) of the switch support Power over Ethernet (PoE) function. These PoE ports can automatically detect and supply power with those IEEE 802.3af/at compliant Powered Devices (PDs). In this situation, the electrical power is transmitted along with data in one single cable allowing you to expand your network where there are no power lines or outlets, where you wish to fix devices such as APs, IP Cameras or IP Phones, etc.

### Easy To Use

WI-PS310GF is easy to install and use. It requires no configuration and installation. With outstanding performance and quality, the WI-PS310GF 8GE+2SFP Port Gigabit Desktop Switch with 8-Port PoE is a great selection for expanding your home or office network.

## Specification

HARDWARE FEATURES	
Interface	8GE POE ports

## HARDWARE FEATURES

	2 SFP Uplink Ports
<b>Network Media</b>	10Base-T: Pair 2 Category 3(Cat3) and above UTP/STP( $\leq 100\text{m}$ ) 100Base -TX: Pair 2 Category 5(Cat5) and above UTP/STP( $\leq 100\text{m}$ ) 1000Base-T: Pair 4 Category 5(Cat5e) and above UTP/STP( $\leq 100\text{m}$ ) 1000Base-SX:62.5 $\mu\text{m}$ /50 $\mu\text{m}$ MMF(2m~550m) 1000Base-L X:62.5 $\mu\text{m}$ /50 $\mu\text{m}$ MM(2m~550m) or 10 $\mu\text{m}$ SMF(2m~5000m)
<b>Fan Quantity</b>	Fanless
<b>Power Budget</b>	150W
<b>Internal Power Supply</b>	AC 110~265V 50/60HZ
<b>PoE Ports (RJ45)</b>	Standard: 802.3 af/at compliant PoE Ports: Port1- Port8 Power Supply: 150W
<b>Exchange Capacity</b>	20G
<b>Mac Address Table</b>	4K

## HARDWARE FEATURES

<b>Packet Forwarding Rate</b>	14.9Mpps
<b>Buffer</b>	1.5Mb
<b>Jumbo Frame</b>	10240Bytes
<b>Dimensions</b>	Product Size: 210mm*140mm*45mm (L*W*H)

## SOFTWARE FEATURES

<b>Transmission Method</b>	Store-And-Forward
<b>Advanced Functions</b>	Priority Function Mac Address Auto-Learning And Auto-Aging Store and forward IEEE 802.3x flow control for Full-duplex Mode Backpressure for Half-duplex Mode

## OTHERS

<b>Certification</b>	CE, FCC, RoHS
<b>Package</b>	POE Switch

<p><b>Contents</b></p>	<p>Electric Line Guide Book/Warranty Card</p>
<p><b>Environment</b></p>	<p>Working Temperature: -10°C ~ 55°C Storage temperature : -40°C ~ 70°C Working Humidity : 10% ~ 90% RH non-condensing Storage Humidity: 5% ~ 90% RH non- condensing</p>