



**WI-PS212GF-I**  
**8FE+2GE+2SFP Fiber Ports Industrial**  
**PoE Switch with 8-Port PoE**  
**Data sheet**

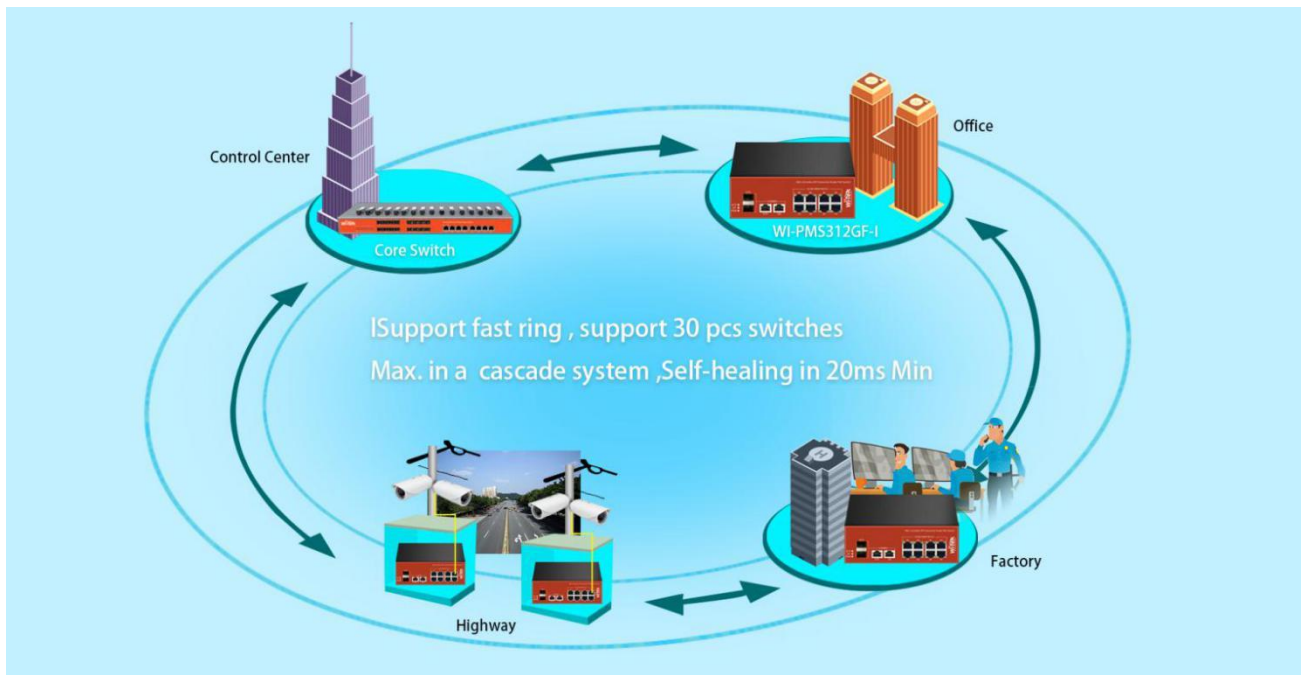
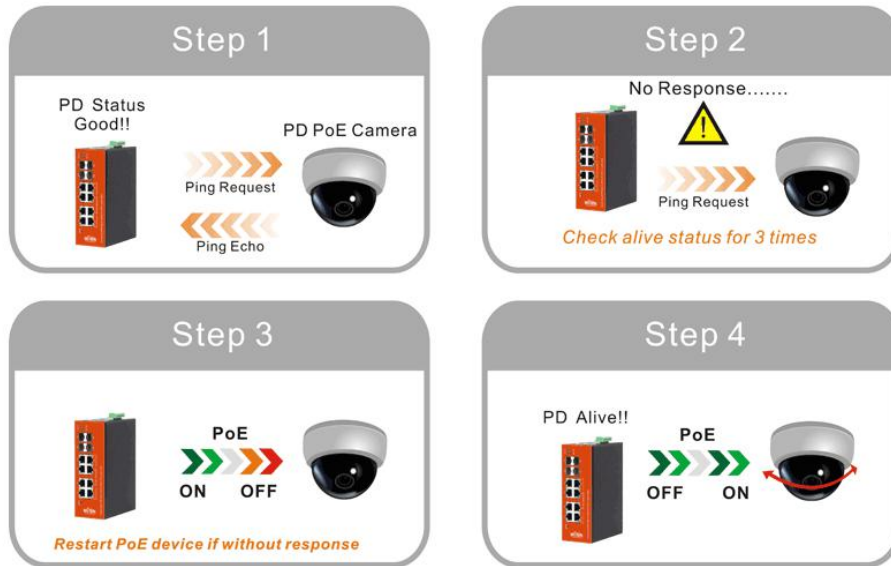
## Highlights

- 8\*100Mbps Ports with 8 PoE ports, 2 Gigabit +2 SFP Fiber Uplink Ports
- Buffer reaches 4Mbit, Support 4K high-definition video transmission
- Support Smart PoE Watchdog Function for PD alive check
- Support Port VLAN(Port isolation)
- Support PoE Priority(Port1>Port2...>Port4) when power budget not enough
- Support 250meters Long-Range PoE
- Support fast ring, support 30 pcs switches Max. in a cascade system, Self-healing in 20ms Min
- Industrial Level 4 Protection (ESD, RS, EFT, CS)
- -40°C ~80°C working temperature
- IEEE802.3af (15.4W) and IEEE802.3at (30W)

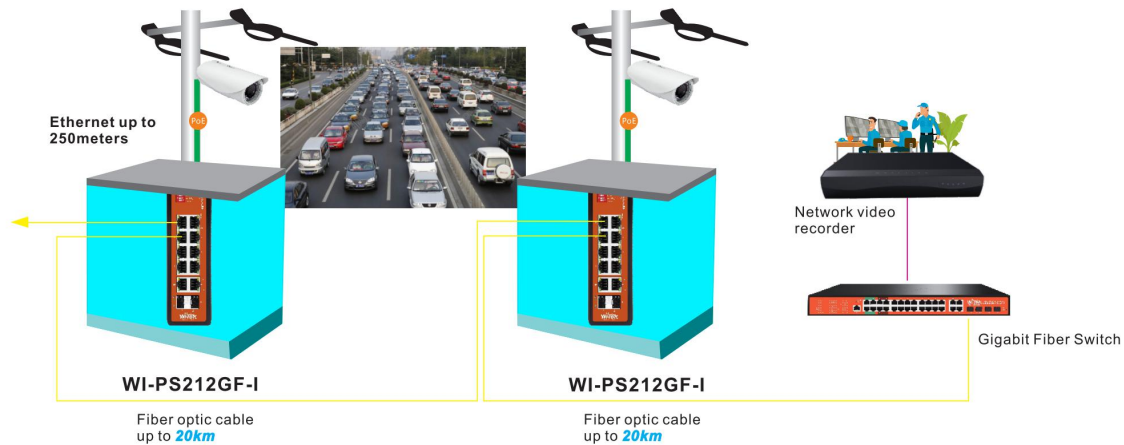


## Typical Application

# Smart PoE Watchdog Function for PD Alive Check



## Extending Ethernet Distance



### Product Description

#### what this product does

WI-PS212GF-I is 8FE+2GE+2SFP Ports Industrial PoE Switch. Provide 8\*10/100Base-T Ethernet ports, 2\*1000BASE-X SFP ports+2\*1000BASE-T(Uplink). The switch provides up to 4Mbit cache, Support 4K high-definition video transmission; Working temperature - 40°C ~ 80°C , strong level of protection from lightning, anti-interference. It fully satisfies the needs of security video surveillance project.

#### High Performance

WI-PS212GF-I Industrial PoE Switch provides 8 100Mbps Auto-Negotiation RJ45 PoE ports. All ports support Auto MDI/MDIX function, eliminating the need for crossover cables or Uplink ports. Featuring non-blocking switching architecture, WI-PS212GF-I forwards and filters packets at full wire-speed for maximum throughput. With 10K Jumbo frame, the performance of large files transfers is improved significantly. And IEEE 802.3x

flow control for Full Duplex mode and back pressure for Half Duplex mode alleviate the traffic congestion and make WI-PS212GF-I work reliably.

## Easy to Use

The auto features of this Ethernet switch make installation plug and play and hassle-free. No configuring is required. Auto MDI/MDIX eliminates the need for crossover cables. Auto-negotiation on each port senses the link speed of a network device (100, 1000 Mbps) and intelligently adjusts for compatibility and optimal performance.

## Specification

HARDWARE FEATURES	
<b>Interface</b>	8 100Mbps RJ45 Ports 2 1000Mbps RJ45 Ports 2 1000M SFP Fiber Ports
<b>Network Media</b>	10Base-T: Pair 2 Category 3(Cat3) and above UTP/STP(≤100m) 100Base -TX: Pair 2 Category 5(Cat5) and above UTP/STP(≤100m) 1000Base-T: Pair 4 Category 5(Cat5e) and above UTP/STP(≤100m) 1000Base-SX:62.5μm/50μm MMF(2m~550m) 1000Base-L X:62.5μm/50μm MM(2m~550m) or 10μm SMF(2m~5000m)
<b>Fan Quantity</b>	Fanless
<b>Surge</b>	8KV Per: IEC61000-4-5

## HARDWARE FEATURES

<b>Immunity</b>	
<b>ESD Protection</b>	ESD Level 4 Per: IEC61000-4-2 RS Level 4 Per: IEC61000-4-3 EFT Level 4 Per: IEC61000-4-4 CS Level 4 Per: IEC61000-4-6
<b>External Power Supply</b>	DC1-DC2: 12-39V 5A Max for Non-PoE DC1-DC2: 39-57V 5A Max for PoE
<b>PoE Ports (RJ45)</b>	Port1-8 Standard: 48V 802.3af/at
<b>Backbound Bandwidth</b>	9.6Gbps
<b>Mac Address Table</b>	8K
<b>Packet Buffer Memory</b>	7.14Mb
<b>Jumbo Frame</b>	10240 Bytes
<b>Dimensions</b>	166mm*124mm*52mm(L*W*H )

## SOFTWARE FEATURES

<b>Transmission</b>	Store-And-Forward
---------------------	-------------------

SOFTWARE FEATURES	
Method	
<b>Advanced Functions</b>	Priority Function Mac Address Auto-Learning And Auto-Aging Store and forward IEEE 802.3x flow control for Full-duplex Mode Backpressure for Half-duplex Mode

OTHERS	
Certification	CE, FCC, RoHS
<b>Package Contents</b>	POE Switch Guide Book/Warranty Card
<b>Environment</b>	Working Temperature: -40°C ~ 80°C Storage temperature : -40°C ~ 90°C Working Humidity : 10% ~ 90% RH non-condensing Storage Humidity: 5% ~ 95% RH non condensing