

SSM-RS10/20

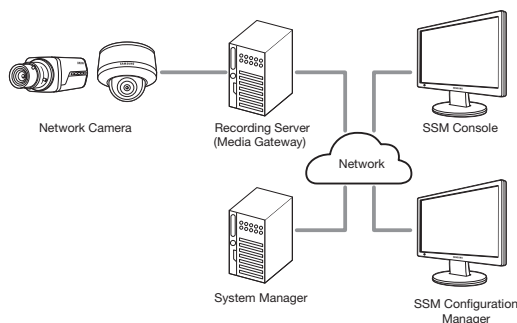
SSM Recording Server



Key Features

- Add on recording module for SSM
 - : Recording setting, live video monitoring and search / playback of recorded video by SSM
- Delivers high performance recording (Up to 400Mbps)
- Playback / back up throughput up to 100Mbps
- Supports various recording options
 - : Continuous recording
 - : Event based recording (including Pre / Post alarm recording) (Motion detection, VA, Video loss, Alarm signal input)
 - : Scheduled recording (Including holiday set up)
- Notification in case of event occurring
 - : User defined alert sound output
 - : E-mail to pre-assigned receiver
 - : Notification to monitoring software (CMS)
- Multiple disk allocation and distribution for stable recording
- Multi-level user access and authority management

System Configuration



	SSM-RS10	SSM-RS20	Trial version
DEVICE			
Supported Device	Samsung's Network Camera, Encoder		
Supported Protocols	Samsung, ONVIF profile S		Samsung
Max. Register Device	36	72	16
PERFORMANCE			
Video	Supported Format	H.264, MJPEG, MJPEG	
	Supported Resolution	Depending on the device	
Audio	Supported Audio Compression Format	G.711 u-law (PCM), G.723, G.726 (ADPCM)	
	Performance	Up to 400Mbps (Four or more HDDs (SATA II 7200rpm) should be used for 400Mbps recording performance)	
Recording	Mode	Manual, Continuous mode, Event (Pre/Post alarm recording) Event & Schedule mode	
	Quality	Depending on the device	
	Pre/Post Record Time	Pre : 1 ~ 18CH 60sec, 19 ~ 36CH 30sec, 37 ~ 72CH 15sec Post : 1200sec (when D1 resolution 30fps)	
	Logs	System, User access, Back up, Recording log, Event log (Motion, Alarm, Video loss, Video analytic, Audio)	
Playback	Performance	Up to 100Mbps, Up to 16CH simultaneously	
	Mode	Time, Event, Timeline	
Storage	Max. Controller of HDD	24HDDs	
	Supported HDD Format	SATA2 7200rpm, e-SATA, SAS, iSCSI	
	Functions	Storage space assigning by each disk, Warning against lower disk space	
System	NIC	NIC is selectable by device connection and client connection type	
	SW Status	Device connection, Manual/Schedule recording status	
	Data Security	Login packet encryption!	
	Settings	Initialization / Export / Import	
	Functions	Auto power-on record	
	Time Synchronization	NTP client	
Programs	Configuration Manager	Recording & storage settings, User management, Event action setting, Schedule back up, System settings	
	Console	Live monitoring, Playback, Back up	
GENERAL			
System Requirement (Recommended)	CPU : Intel Core i7 Sandy bridge, RAM : 8GB Video memory : 256MB, 4HDDs (SATA II 7200rpm 64MB) above OS : Windows Server 2008 R2, Windows Server 2012, Windows 7 32/64bit, Windows 8 32/64bit		
System Requirement (Minimum)	CPU : Intel Core i3 Sandy bridge, RAM : 8GB Video memory : 256MB, 2HDDs (SATA II 7200rpm 64MB) above OS : Windows XP SP2, Windows Server 2003 SP2, Windows Vista, Windows Server 2008 R2, Windows Server 2012, Windows 7 32/64bit, Windows 8 32/64bit		

* Only 1 Recording Server connection is available with Samsung Security Manager when use the trial version.

* The latest product information / specification can be found at www.samsungsecurity.com