



SI-108
IR Controller

Quick Installation Guide

01 Introduction

The SI-108 IR Controller has a IR function, based on Z-Wave™ technology.

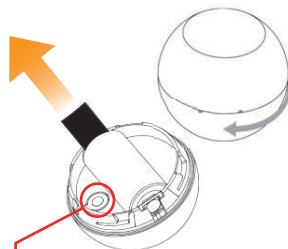
This device is a Security Enabled Z-Wave Plus Product. Z-Wave Plus technology uses a low-power RF radio embedded or retrofitted into home electronics devices and systems, such as lighting, home access control, entertainment systems and household appliances.

With Z-wave technology, SI-108 can be included and operated in AirLive Z-Wave™ SG-101 or any Z-Wave™ certified controller and/or other applications.

02 Include IR Controller sensor -1

Turn the cover counter-clockwise and open it. Remove the black mylar, PIR motion sensor will automatically be in the inclusion mode and the red light LED will flash about 30 seconds.

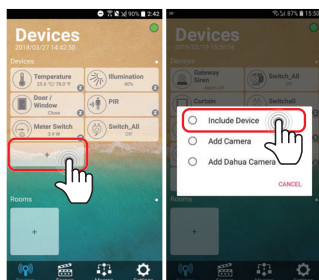
Note: Enclosure lock is marked with a dot.



When including fails press the small button 3x in rapid succession.

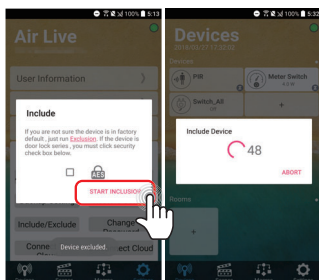
03 Include IR Controller sensor -2

- Go to Devices page and click "+" icon.
- Press Include Device



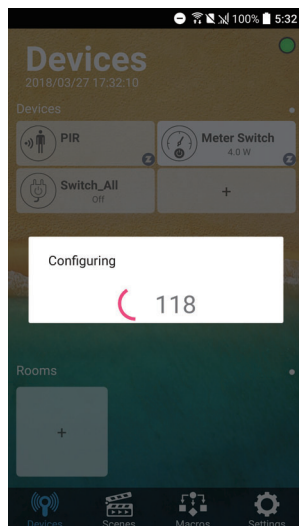
04 Include IR Controller sensor -3

- Press "START INCLUSION"
- Start to include a device.



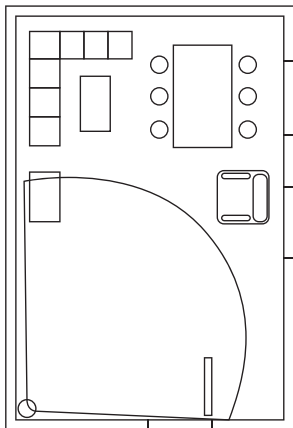
05 Include IR Controller sensor -4

When the device is being included, APP will configure the setting into gateway.



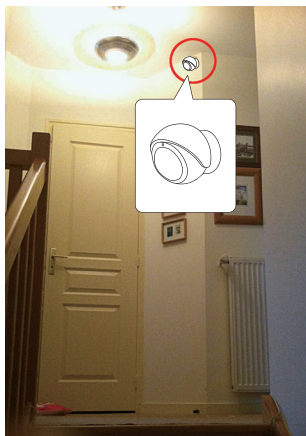
06 Install the IR Controller sensor-1

The IR Controller should be installed with free line of sight to Air Condition unit you want to control.



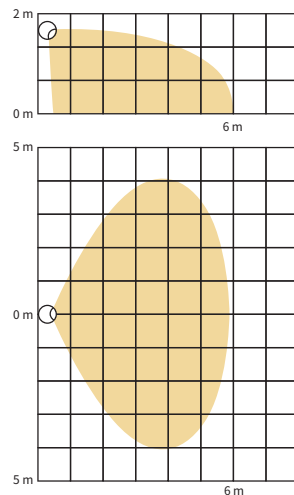
07 Install the IR Controller sensor-2

There's a magnet on the backside of this device. It can stick to the bracket.



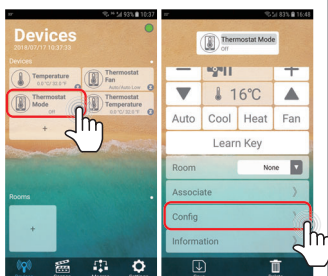
08 IR Range-1

The range of the IR Controller is shown below. Actual range of the IR Controller can be influenced by environmental conditions.



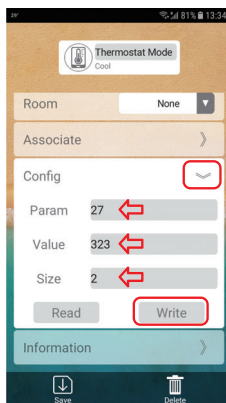
09 Setup IR Controller

Click on the Thermostat Icon, a new page will open now select "Config"



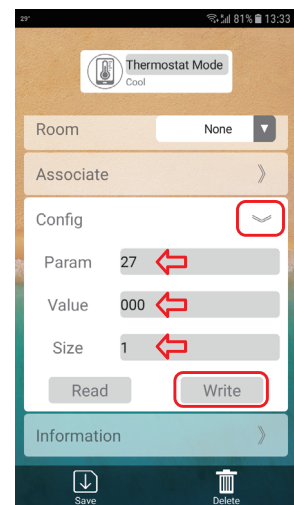
10 Using Library Code Mode-1

Library Code mode: Enter 27 at Param, For Value enter the Library code for your Brand of Air Conditioner. Please see the Library Code List. When the first code does not work try the second. For Size enter 2 and press Write. The process is now complete



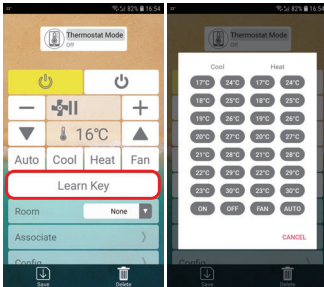
11 Using Learning Mode-1

Learning Mode: Enter 27 at Param, For Value enter 000 and Size enter 1 and press Write. Config can now be closed



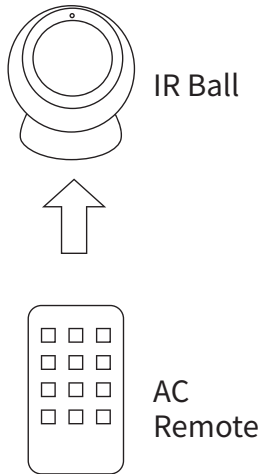
12 Using Learning Mode-2

To program the app, Place the Air Condition remote in front of the IR Controller (5cm). Press the Learn Key in the APP and press the key you like to learn. Ex ON: Press ON in the APP and now press "ON" on the Remote. The green LED will burn when it is off its succesfull.



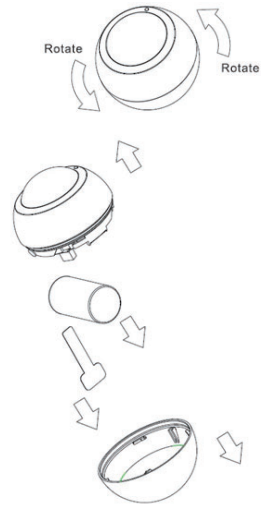
13 Using Learning Mode-3

There's a magnet on the backside of this device. It can stick to the bracket.



10 Battery Replacement

When the device reports the low battery message, users should replace the battery. The battery type is CR123A, 3.0V



FCC Interference Statement

This equipment has been tested and found to comply with the limits for a Class B digital device, pursuant to Part 15 of the FCC Rules. These limits are designed to provide reasonable protection against harmful interference in a residential installation.

This equipment generates, uses and can radiate radio frequency energy and, if not installed and used in accordance with the instructions, may cause harmful interference to radio communications.

However, there is no guarantee that interference will not occur in a particular installation.

If this equipment does cause harmful interference to radio or television reception, which can be determined by turning the equipment off and on, the user is encouraged to try to correct the interference by one of the following measures:

- Reorient or relocate the receiving antenna.
- Increase the separation between the equipment and receiver.
- Connect the equipment into an outlet on a circuit different from that to which the receiver is connected.
- Consult the dealer or an experienced radio/TV technician for help.

This device complies with Part 15 of the FCC Rules. Operation is subject to the following two conditions:

- (1) This device may not cause harmful interference, and
- (2) This device must accept any interference received, including interference that may cause undesired operation.

FCC Caution: Any changes or modifications not expressly approved by the party responsible for compliance could void the user's authority to operate this equipment.

This transmitter must not be co-located or operating in conjunction with any other antenna or transmitter.

Warning

Do not dispose of electrical appliances as unsorted municipal waste, use separate collection facilities. Contact your local government for information regarding the collection systems available.

If electrical appliances are disposed of in landfills or dumps, hazardous substances can leak into the groundwater and get into the food chain, damaging your health and well-being. When replacing old appliances with new once, the retailer is legally obligated to take back your old appliance for disposal at least for free of charge.

RF Exposure Information (SAR)

This device meets the government's requirements for exposure to radio waves. This device is designed and manufactured not to exceed the emission limits for exposure to radio frequency (RF) energy set by the Federal Communications Commission of the U.S. Government. The exposure standard employs a unit of measurement known as the Specific Absorption Rate, or SAR. The SAR limit set by the FCC is 1.6 W/kg. Tests for SAR are conducted using standard operating positions accepted by the FCC with the EUT transmitting at the specified power level in different channels.

The FCC has granted an Equipment Authorization for this device with all reported SAR levels evaluated as in compliance with the FCC RF exposure guidelines. SAR information on this device is on file with the FCC and can be found under the Display Grant section of www.fcc.gov/eet/ea/fccid after searching on FCC ID: ODM5G101