



SD-101
In-Wall Dimmer
Quick Installation Guide

01 Introduction

SD-101 is a security enabled wireless dimmer, based on Z-Wave Plus technology. Z-Wave Plus™ enabled devices displaying the Z-Wave Plus™ logo can also be used with it regardless of the manufacturer, and can also be used in other manufacturer's Z-Wave™ enabled networks. You can On/Off the light by pressing the button briefly, or a long pressing to control the brightness of dimmable light bulb.

This dimmer is a transceiver which is a security enabled device which based on Z-Wave Plus technology, and it is fully compatible with any Z-Wave™ enabled network. Since SD-101 supports Security Command Class, it can learn with a Secured enabled controller to fully utilize the device.

02 Assembling and Wiring -1

Before we begin installing the device, please make sure that the power is off to avoid electrical shock. When installing, we suggest that it will be performed by a qualified and licensed electrician.

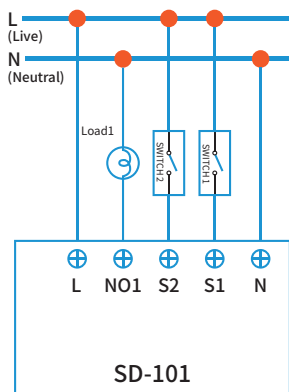
Warnings:

1. When installing, make sure line and power is turn off.
2. Do not exceed max rating.
3. Do not use non-dimmable lights.

03 Assembling and Wiring -2

IMPORTANT:

Please make sure the switches are wired in the same AC power line loop



Note: Please make sure the switches are wired in the same loop.

04 Include in-wall Dimmer -1

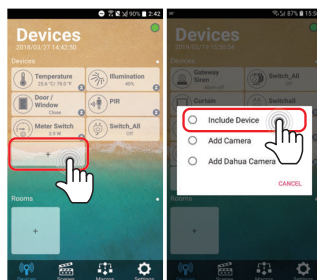
Power the device by connecting the power circuit on. Device will automatically be in inclusion mode. If device is not in inclusion mode, press include/exclude button three times.

Include/exclude Button



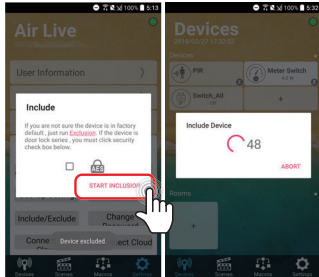
05 Include in-wall Dimmer -2

- Go to Devices page and click "+" icon.
- Press Include Device



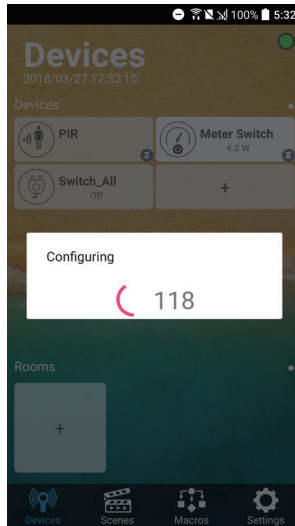
06 Include in-wall Dimmer -3

- Press "START INCLUSION"
- Start to include a device.



07 Include in-wall Dimmer -4

When the device is being included, APP will configure the setting into gateway.



08 Choosing a Suitable Location

1. Should be placed indoors.
2. Should be within 40 meters of either the gateway or another non-battery powered Z-wave device.
3. Should not face the window or the sunlight.
4. Should be placed on humid /dusty place.
5. Should not be located where in combustible substances or any source of heat e.g. fires, radiator, boiler, etc.

09 LED Indication

1. Normal: Whenever we switch On and off of the SD-101 by On/Off button or RF command, the LED will light up when switch on; whereas LED off when switch off.
2. No node ID: Under normal operation, when the Switch has not been allocated a node ID, the LED flashes on and off alternately at 2-second intervals. By pressing On/Off button, it will stop flashing temporarily.
3. Learning: When SD-101 is in learning mode, LED flashes on and off alternately and repeatedly at 0.5 second intervals.

10 Manual dim level control

To manually switch on the light, press and release the On/Off button or S1/S2 shortly when the light is off. The light will dim from off to the level which was set before switch off.

To manually switch off the light, press and release the On/Off button or S1/S2 shortly when the light is on.

To adjust the dim level, press and hold the On/Off button or S1/S2 until the desired dim level is achieved, then release.

FCC Interference Statement

This equipment has been tested and found to comply with the limits for a Class B digital device, pursuant to Part 15 of the FCC Rules. These limits are designed to provide reasonable protection against harmful interference in a residential installation.

This equipment generates, uses and can radiate radio frequency energy and, if not installed and used in accordance with the instructions, may cause harmful interference to radio communications.

However, there is no guarantee that interference will not occur in a particular installation. If this equipment does cause harmful interference to radio or television reception, which can be determined by turning the equipment off and on, the user is encouraged to try to correct the interference by one of the following measures:

- Reorient or relocate the receiving antenna.
- Increase the separation between the equipment and receiver.
- Connect the equipment into an outlet on a circuit different from that to which the receiver is connected.
- Consult the dealer or an experienced radio/TV technician for help.

This device complies with Part 15 of the FCC Rules. Operation is subject to the following two conditions:
(1) This device may not cause harmful interference, and
(2) This device must accept any interference received, including interference that may cause undesired operation.

FCC Caution: Any changes or modifications not expressly approved by the party responsible for compliance could void the user's authority to operate this equipment. This transmitter must not be co-located or operating in conjunction with any other antenna or transmitter.

Warning

Do not dispose of electrical appliances as unsorted municipal waste, use separate collection facilities and manufactured not to exceed the emission limits for exposure to radio frequency (RF) energy set by the Federal Communications Commission of the U.S. Government.

If electrical appliances are disposed of in landfills or dumps, hazardous substances can leak into the groundwater and get into the food chain, damaging your health and well-being. When replacing old appliances with new ones, the retailer is legally obligated to take back your old appliance for disposal at least for free of charge.

RF Exposure Information (SAR)

This device meets the government's requirements for exposure to radio waves. This device is designed and manufactured not to exceed the emission limits for exposure to radio frequency (RF) energy set by the Federal Communications Commission of the U.S. Government. The exposure standard employs a unit of measurement known as the Specific Absorption Rate, or SAR. The SAR limit set by the FCC is 1.6 W/kg. Tests for SAR are conducted using standard operating positions accepted by the FCC with the EUT transmitting at the specified power level in different channels.

The FCC has granted an Equipment Authorization for this device with all reported SAR levels evaluated as in compliance with the FCC RF exposure guidelines. SAR information on this device is on file with the FCC and can be found under the Display Grant section of www.fcc.gov/eo/ea/fccid after searching on FCC ID: ODM5G101