





TECHNICAL MANUAL

GIUDECCA



IMPORTANT SAFETY INSTRUCTIONS
READ THE FOLLOWING SECTION CAREFULLY AND STORE IT

WARNING	
	Explosion risk if the battery is replaced with a wrong type
	High sound pressure, risk of hearing loss



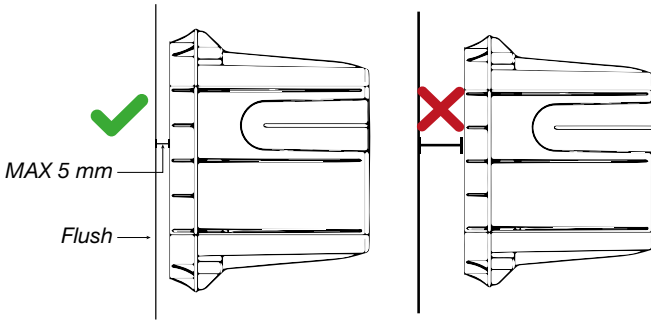
IMPORTANT:

not to have condensation in the sounder, it is important to avoid any air flow inside the duct.

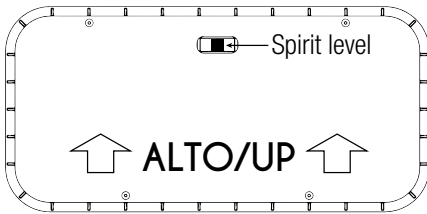
To such purpose, once the sounder is connected, seal the hole using some silicon or any other plaster.

This operation prevents condensation from forming inside the sounder; condensation mostly appears in winter and it is usually caused by warm and humid air coming out of the wall where the sounder is installed and passing through the hole located on the sounder base.

DIRECTIONS FOR A CORRECT MOUNTING

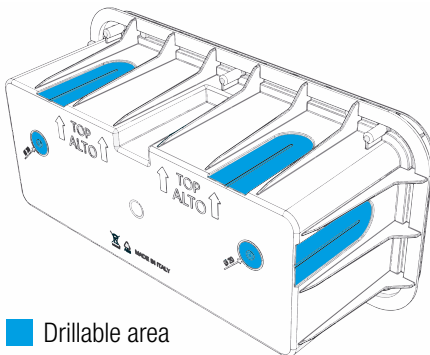
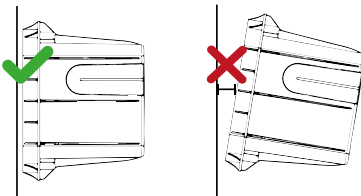


1. To ensure a correct functioning of the tamper, maximum installation depth from flush is 5 mm.



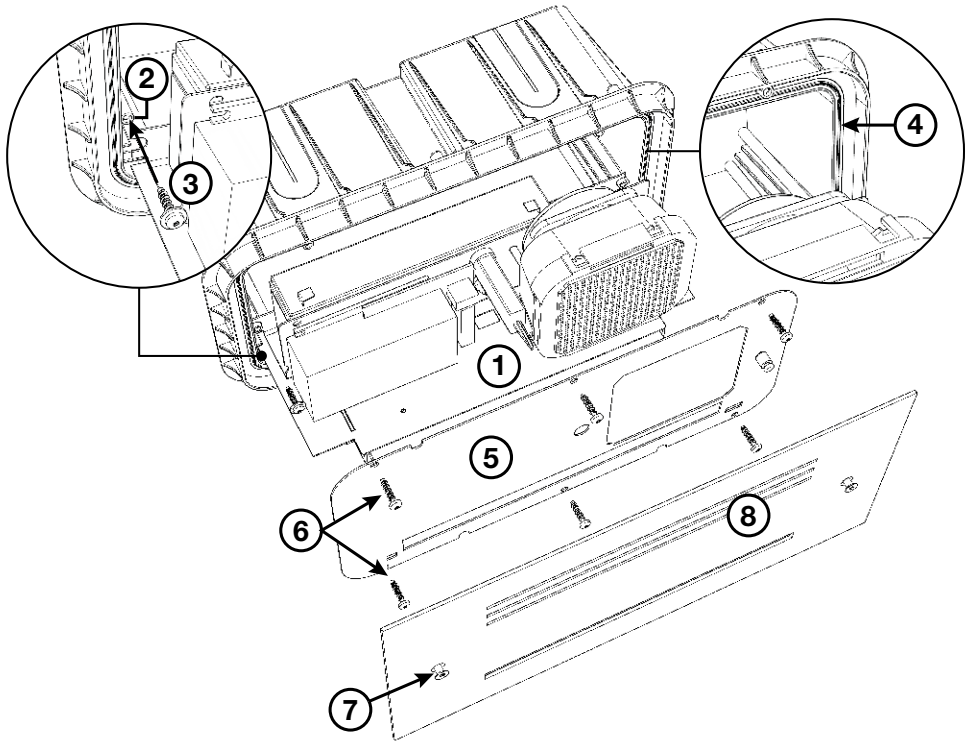
2. Install the built-in box according to direction and correct spirit level orientation.

3. To avoid box damaging and contamination with construction material, install the protective cover using the 4 screws provided.



4. Pay attention at box drilling. Holes must be drilled only where indicated, otherwise internal components may be improperly housed. Drill only where strictly necessary.

Drillable area



External cover (7)



x2

Stop trolley (3)



x2

Internal cover (6)



x6

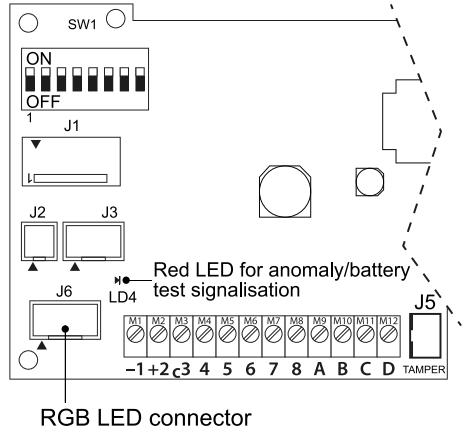
1. INSERT THE TROLLEY (1) IN THE GUIDE SLOTS (2) AND SLIDE IT TILL THE END;
2. INSERT THE 2 LOCKING SCREWS PROVIDED (3) IN THE CORRESPONDING HOLES;
3. CLEAN THE SEAL (4) FROM ANY RESIDUE;
4. FIX THE INTERNAL COVER (5) WITH THE 6 SCREWS PROVIDED (6);
5. CLOSE THE EXTERNAL COVER OF THE SOUNDER USING THE 2 SCREWS (7)

DESCRIPTION

Sounder mod. GIUDECCA with high luminosity and low consumption multicolor LED flashing light – anti-opening tamper protection – programmable sound and timing – microprocessor self-test of: battery and speaker with anomaly negative output - programming of sounder polarity command and system ON/OFF – immediate or permanent optical indication of ON/OFF system – electronic circuit protected against polarity inversion and resin tropicalization against bad weather conditions and humidity – external and internal cover in painted metal.

CONNECTION SCHEME

TERMINALS	CONNECTIONS
-1	NEGATIVE POWER SUPPLY 0V GND
+2	POSITIVE POWER SUPPLY +13.8V
c3	SOUNDER CONTROL
4	ON/OFF - ALARM SYSTEM STATUS NOTICE
5	FLASH RESET / BLOCK SPEAKER INPUT
6	ANOMALY OUTPUT. OPEN COLLECTOR 0V = NO ANOMALY
7	N.C. SELF-PROTECTION AND ANTI-FOAM
8	N.C. SELF-PROTECTION AND ANTI-FOAM
A	RED RGB LED INPUT
B	GREEN RGB LED INPUT
C	BLUE RGB LED INPUT
D	WHITE RGB LED INPUT



ANOMALY OUTPUT

The sounder is managed by a microcontroller able to check battery recharge, battery status and the speaker; in case of anomaly, open collector terminal (6) opens.

Every 22 hours, the microcontroller automatically performs the battery test, notified by LD4 fast flash and other tests every 10 sec. In case of anomaly, LD4 LED blinks according to the table below.

If the sounder is **correctly powered**, the anomaly output (terminal no. 6) **usually stays at 0V** (current max 50mA). In case a test performed **is not passed**, the anomaly output **disconnects from ground and becomes free**.

Notification of last anomaly, indicated by LED LD4 is reset to zero only if a command is given to terminal no. 4 or c3. To launch the remote battery test, send a pulse to terminal no. 5 with sounder on rest mode. This way, a 30-seconds test runs.

ANOMALY TYPE	LD4 LED
Speaker interruption (test performed every 10 s)	1 flash
No recharge current (recharge current is lower than 12V) (test performed every 10 s)	2 flashes
Battery is disconnected (test performed every 10 s)	3 flashes
Battery voltage is low (recharge is lower than 10V) (test performed every 10 s)	4 flashes
Battery low-capacity, deterioration (test performed every 22 hours)	5 flashes
No anomalies	OFF
Test battery in progress	Fast

FLASH RESET / BLOCK SPEAKER INPUT

With DIP6 in OFF, terminal 5 works as block speaker. With DIP6 in ON, terminal 5 works as reset flash: the flashing unit activates with sounder trigger and deactivates with terminal 5. During normal operation, a command to terminal 5 activates battery test that lasts 30 seconds.

TAMPER CONNECTION (ANTI-OPENING AND ANTI-FOAM)

Connect terminals no. 7 and no. 8 to the tamper line coming from the control panel.

LED COMMANDS

TERMINALS: **A**=RED, **B**=GREEN, **C**=BLUE, **D**=WHITE

A, B, C, D terminals control independently the flashing unit to run customisable notifications. Use DIP 8 to set functioning.

DIP-SWITCHES

NOTE: Dip switches setting is stored after 12 hours from the first supply. Take away and give again power to the board to change settings.

DIP 1 SOUND TIMING

- Dip-switch 1 in OFF: sound timing is 3 minutes (DEFAULT SETTING).
- Dip-switch 1 in ON: sound timing is 8 minutes.

DIP 2 SOUNDER CONTROL INPUT POLARITY

NOTE: THE INPUT IS MISSING

- Dip-switch 2 in OFF: trigger for sounder activation is positive (DEFAULT SETTING).
- Dip-switch 2 in ON: trigger for sounder activation is negative.

DIP 3 SOUND TYPE SELECTION

- Dip-switch 3 in OFF: sound is INCREASING-CONTINUOUS-DECREASING-CONTINUOUS (DEFAULT SETTING).
- Dip-switch 3 in ON: sound is INCREASING-DECREASING.

DIP 4 SYSTEM STATUS OPTICAL SIGNALISATION (ON-OFF IMMEDIATE AND PERMANENT)

- Dip-switch 4 in OFF: instantaneous ON-OFF situation (DEFAULT SETTING).
- Dip-switch 4 in ON: instantaneous ON-OFF situation with blue LED flashing intermittently while trigger is given to terminal 4.

By giving a command to terminal no.4, the LEDs of the sounder blink in red 3 times (ON) and all anomalies are reset to zero. By taking command away, the LEDs light up steady in green for 5 seconds (OFF).

DIP 5 INPUT POLARITY 4 - 5 - A - B - C - D

NOTE: INPUTS ARE GIVING

- Dip-switch 5 in OFF: command is positive (DEFAULT SETTING).
- Dip-switch 5 in ON: command is negative.

DIP 6 INPUT 5 FUNCTION

- Dip-switch 6 in OFF: input 5 with block speaker function (DEFAULT SETTING).
- Dip-switch 6 in ON: input 5 with flash reset function. The flash starts with the trigger and stops with the reset.

DIP 7 DAILY ALARM COUNTING

- Dip switch 7 in OFF: infinite alarms (default setting)
- Dip switch 7 in ON: max 4 alarms every 24h. Alarm is counted if it lasts at least 30 seconds. From 5th alarm, the sounder flashes with no sound. System status activation resets alarm counting.

DIP 8 RGB LED FUNCTION

TERMINALS: **A**=RED, **B**=GREEN, **C**=BLUE, **D**=WHITE

- Dip switch 8 in OFF: LED flash steady on and follows arrival order of the inputs. (DEFAULT SETTING)
- Dip switch 8 in ON: the LED notifies all the inputs present, it flashes in case of one input.

TECHNICAL FEATURES

Voltage	Rated power supply voltage	13.8 Vdc
	Minimum command + c3	4.5 Vdc
	Minimum power supply	12.7 Vdc
	Maximum power supply	15.5 Vdc
Current (consumption)	Sound from battery	0.85 A +100/-300 mA
	Max from control panel	700 mA ± 100 mA
	Flashing unit consumption	25 mA ± 10 mA
	Consumption in stand-by	15mA
	Consumption from control inputs	+0.5 mA @Vc=12V; -0.3 mA @Vc=0V
	Open collector	-50 mA Max
Fundamental frequency	2,100 Hz	
Maximum acoustic power	105 dB (A) @ 1 m	
LED flashing unit life	1,000,000 flashes	
Protection degree	IP 34	
Working temperature conditions	From -30° to +65° C	
Timing	Settable 3-8 minutes	
Control panel command	2 or 3 wires	
Battery capacity	12V 2.3Ah Pb	
Size	170x335x124 (H x W x D)	
Recessed hole size	152x314x116 (H x W x D)	
Weight	2500 gr.	



DISPOSAL:
This product must be disposed of using the appropriate bins for electrical and electronic products. This product must not be placed in bins for collection of other waste types.

WARRANTY

All Venitem products are granted against factory or material defects. In order to improve design and quality of the products, Venitem reserves the right to modify them without prior notice. All faulty or defective items must be returned to the supplier.



Sede legale e operativa / Headquarters:
Via del Lavoro, 10 30030 Salzano (VE) - Italy
Tel. +39.041.5740374 - Fax +39.041.5740388
info@venitem.com - www.venitem.com



DESIGN E
PRODUZIONE
IN ITALIA 
ITALIAN DESIGN AND PRODUCTION

1607894242

MA-SE-GIUD-01-04