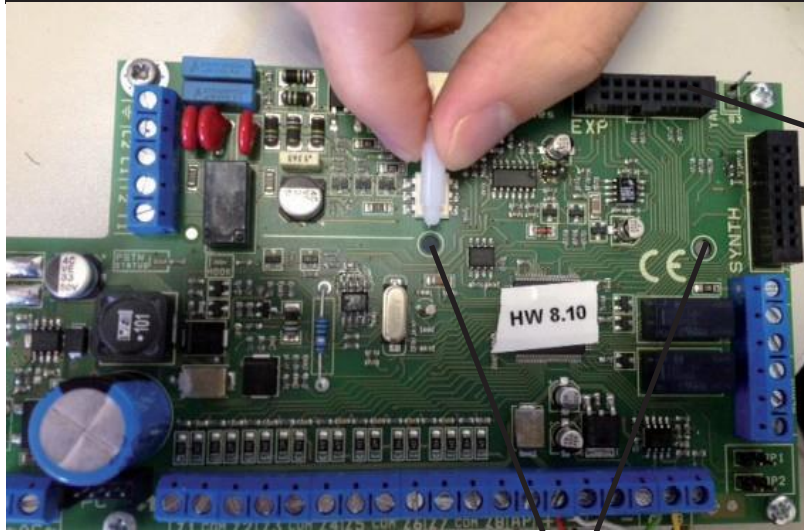


IP1 module

IP1 is the module for connect the panel in to the web for AMC Cloud (smartphone app managing), and for sending monitoring station data via web.

Is plugged directly on the main board of panel in SOCKET EXP:

Installation on panel



socket for ip board

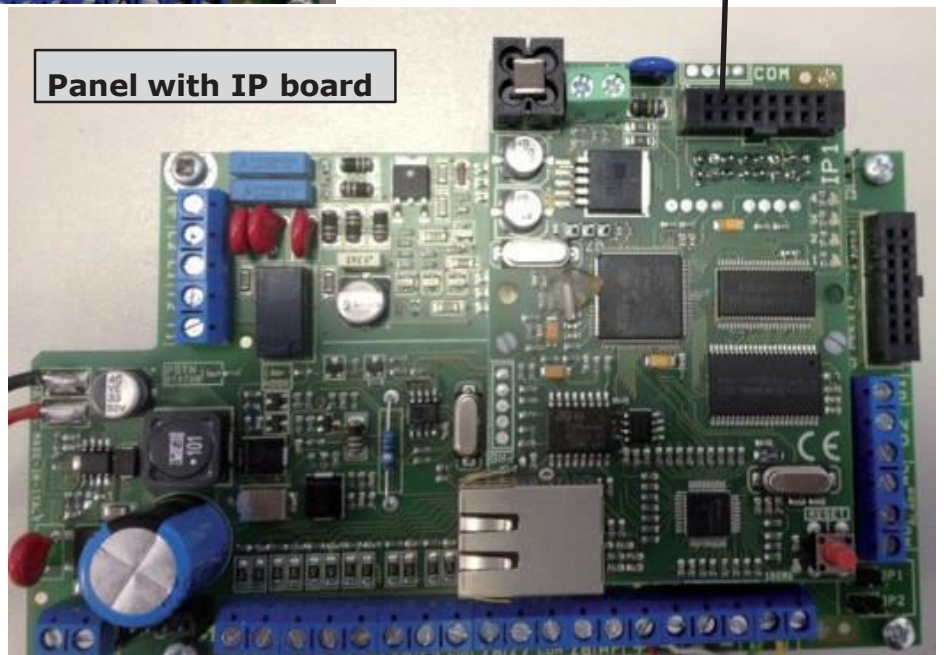
board fixing pins

socket for XGPRS board

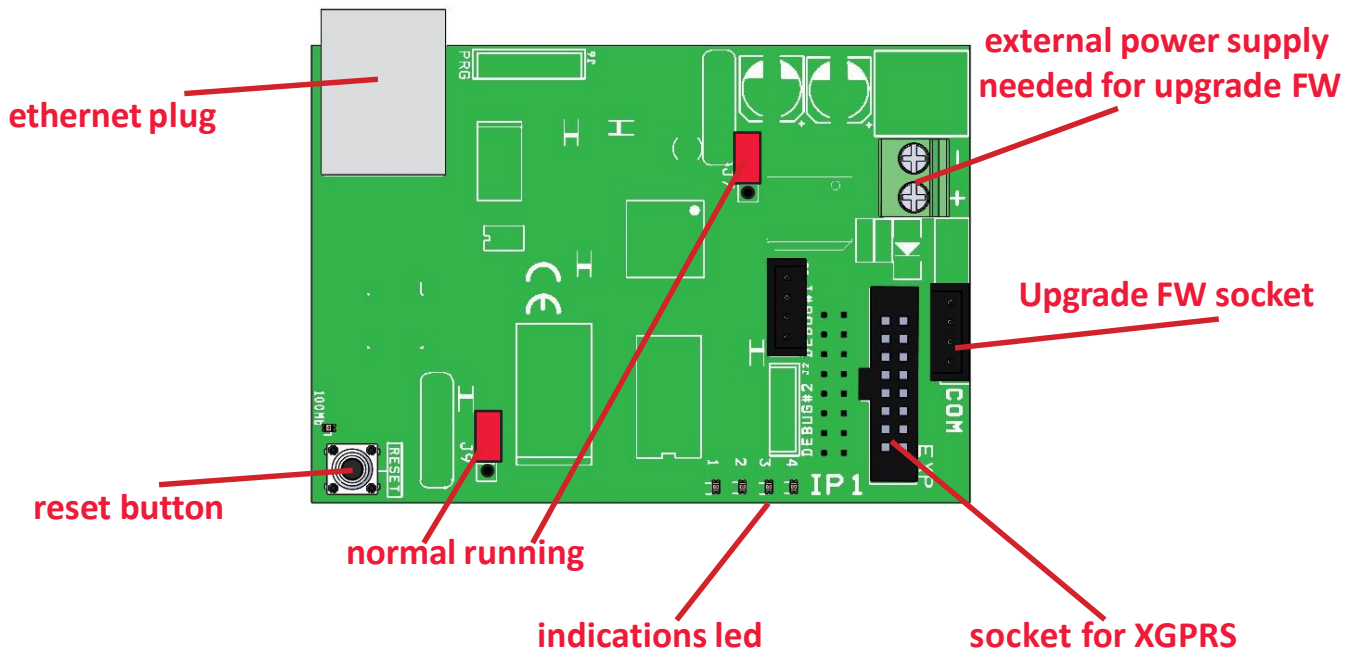


IP board

Panel with IP board



IP1 board description



Specifications

IP BOARD	
Power supply:	5 -13,8 Vcc
Current:	163mA @12V
MPU:	ARM® Cortex™-M3
RAM:	512 KB
ROM1:	8 MB
ROM2:	64 KB
SYS:	RTOS v7.2
LAN:	10/100 BASE TX IEEE 802.1x Full Duplex
PROTOCOL:	Base: TCP/IP Encrypt: TLS/SSL Data: AMC Protocol V1.0 for system serie C-X-K
LED:	GREEN ON = OK "comunication to system ok". GREEN BLINKING = FAIL "no comunication to system" (Enable IP expansion on menu) YELLOW BLINKING = system running. RED 1 BLINKING = FAIL to connect to cloud server. "wait to connetting" RED2 BLINKING = Cable not connect;
BUTTON:	RESET = ONLY LAN BOARD
J7-J9:	Normal runing JP7: 1-2 close JP9: 1-2 close
J7-J9:	Firmware update. JP7: 2-3 close JP9: 2-3 close
COM:	DAPTER: COM-S, COM-USB (only for FIRMWARE UPDATE).
Classification	ATS3/SP3 refered to EN 50136-2:2013 (to ensure the classification SP3 the periodic test call must be programmed for work every 30' minutes, or for have classification SP2, the periodic test call can be programmed for work every 25h)