

# GV-IR LED T2

---

## *User's Manual*



Before attempting to connect or operate this product,  
please read these instructions carefully and save this manual for future use.

IRLEDT2-B



© 2014 GeoVision, Inc. All rights reserved.

Under the copyright laws, this manual may not be copied, in whole or in part, without the written consent of GeoVision.

Every effort has been made to ensure that the information in this manual is accurate. GeoVision, Inc. makes no expressed or implied warranty of any kind and assumes no responsibility for errors or omissions. No liability is assumed for incidental or consequential damages arising from the use of the information or products contained herein. Features and specifications are subject to change without notice.

GeoVision, Inc.  
9F, No. 246, Sec. 1, Neihu Rd.,  
Neihu District, Taipei, Taiwan  
Tel: +886-2-8797-8377  
Fax: +886-2-8797-8335  
<http://www.geovision.com.tw>

Trademarks used in this manual: *GeoVision*, the *GeoVision* logo and *GV* series products are trademarks of GeoVision, Inc. *Windows* and *Windows XP* are registered trademarks of Microsoft Corporation.

February 2014

# Contents

<b>Contents .....</b>	<b>1</b>
<b>Preface.....</b>	<b>1</b>
<b>1. Introduction.....</b>	<b>2</b>
<b>1.1 Features.....</b>	<b>2</b>
<b>1.2 Packing List .....</b>	<b>3</b>
<b>2. Connecting GV-IR LED T2 to GV-IPCAM .....</b>	<b>4</b>
<b>3. Installing GV-IR LED T2 .....</b>	<b>7</b>
<b>4. Specifications .....</b>	<b>8</b>

## Preface

Welcome to the **GV-IR LED T2 User's Manual**.

The **GV-IR LED T2** is an indoor-use infrared illuminator, which is designed to work with the **GV-IPCAM** for a better night vision. The table below lists the compatible models of **GV-IPCAM**.

### Compatible GV-IPCAM models

Model No.	Description
<b>GV-BX1300 Series</b>	1.3 MP H.264 WDR D/N Box IP Camera
<b>GV-BX1500 Series</b>	1.3 MP H.264 Super Low Lux WDR D/N Box IP Camera
<b>GV-BX2400 Series</b>	2 MP H.264 WDR Pro D/N Box IP Camera
<b>GV-BX2500 Series</b>	2 MP H.264 Super Low Lux WDR Pro D/N Box IP Camera
<b>GV-BX3400 Series</b>	3 MP H.264 WDR Pro D/N Box IP Camera
<b>GV-BX5300 Series</b>	5 MP H.264 WDR D/N Box IP Camera
<b>GV-BX120D</b>	1.3 MP, H.264, Low Lux WDR D/N Box IP Camera
<b>GV-BX130D Series</b>	1.3 MP, H.264, WDR D/N Box IP Camera
<b>GV-BX140DW</b>	1 MP, H.264, WDR Pro D/N Box IP Camera
<b>GV-BX220D Series</b>	2 MP, H.264, WDR D/N Box IP Camera
<b>GV-BX320D Series</b>	3 MP, H.264, WDR D/N Box IP Camera
<b>GV-BX520D</b>	5 MP, H.264, WDR D/N Box IP Camera

## 1. Introduction

The **GV-IR LED T2** is designed to work perfectly with the **GV-IPCAM** to improve the image performance in low-light or night situations. When the GV-IPCAM detects the illumination of the environment, it would determine it to be Day mode or Night mode. If you set the **GV-IR LED T2** to be triggered by D/N mode, the infrared light of **GV-IR LED T2** will be turned on and the camera images will be switched to monochrome to produce better images in the Night mode. In the Day mode, the infrared light of **GV-IR LED T2** will be turned off and the camera images will be switched to color. For the On-Off conditions of each compatible GV-IPCAM, see 4. *Specifications*.

.Following is the comparison of the **GV-IPCAM** working with and without the **GV-IR LED T2** in 10 lux illuminance.



*With GV-IR LED T2*



*Without GV-IR LED T2*

### 1.1 Features

- Indoor infrared illumination
- 850 nm LEDs
- 12 IR LEDs for 10-meter illumination distance
- 12V DC power supplied from GV-IPCAM. No separate power adapter is required.

## 1.2 Packing List

The GV-IR LED package includes the following items:

- GV-IR LED x 1 (with a power cable and unshielded wires)



- Bracket x 1



- Camera Holder x 1



- Hexagon Head Phillips Screw x 1



- Round Head Phillips Screw x 2



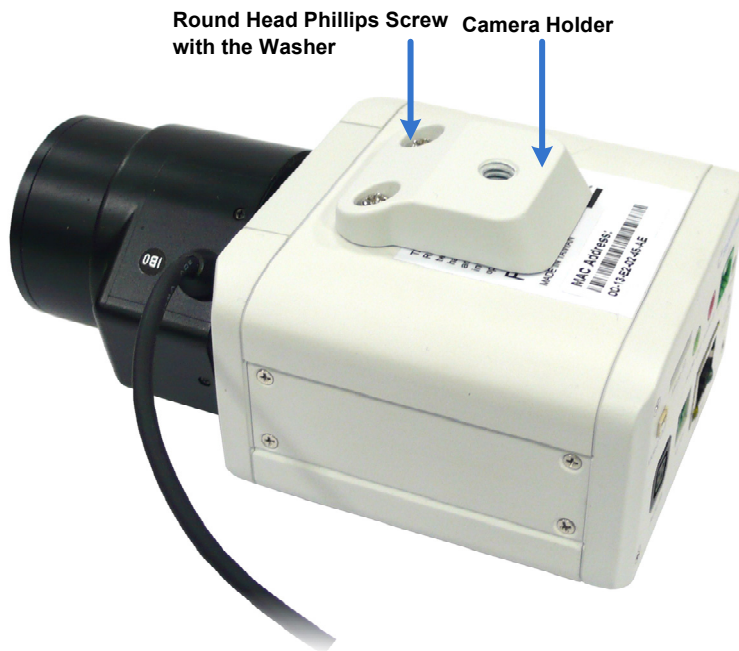
- Round Head Phillips Screw with the Washer x 2



## 2. Connecting GV-IR LED T2 to GV-IPCAM

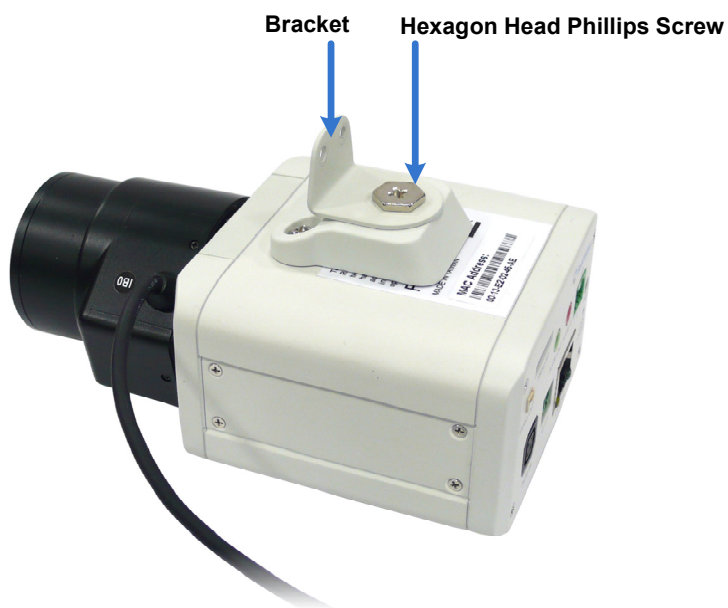
To connect the GV-IR LED T2 to a GV-IPCAM, follow the steps below:

1. Fasten the camera holder to the GV-IR LED T2 with the Round Head Phillips Screws with the washers.



*Figure 1*

2. Fasten the bracket onto the camera holder with the Hexagon Head Phillips Screw.



*Figure 2*

## 2 Connecting GV-IR LED T2 to GV-IPCAM

3. Fasten the GV-IR LED T2 to the bracket with Round Head Phillips Screws.

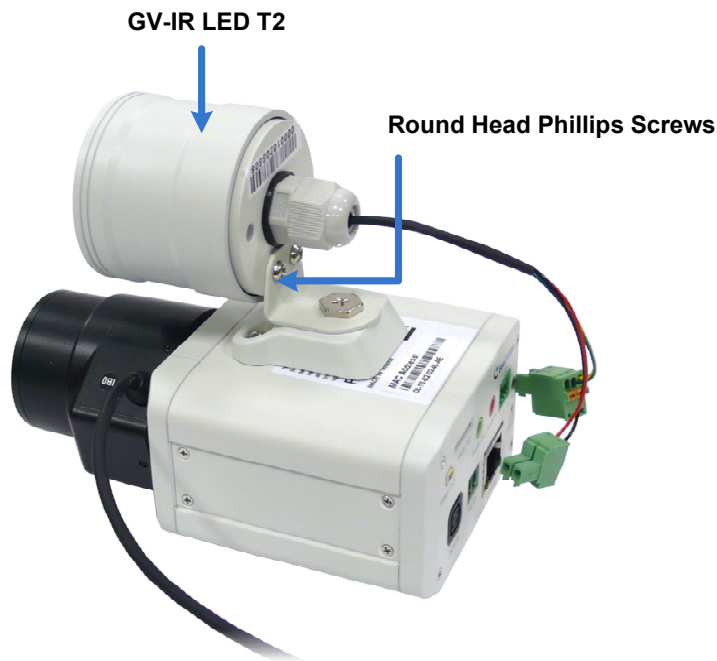


Figure 3

4. Unscrew the power cables of the GV-IPCAM from the supplied 2-pin Terminal Block. Twist the red wire from the GV-IR LED T2 to the power cable (DC 12 V), which has the gray stripes on it, and twist the black wire from the GV-IR LED T2 to the power cable (ground), which has the characters on it.

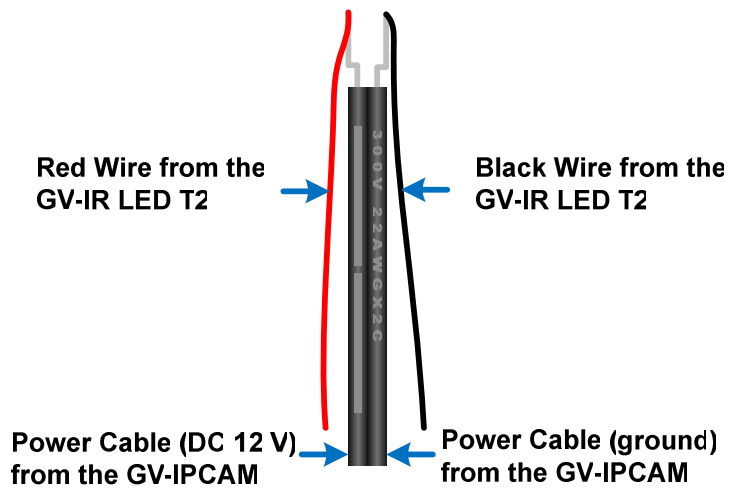


Figure 4

---

**Note:** Ensure to twist the power cables with the wires of the GV-IR LED in the correct way, or it may cause the GV-IR LED to burn out.

---



5. Connect the red wire twisted with the power cable (DC 12 V) to the right-side pin of the Terminal Block, and connect the black wire twisted with the power cable (ground) to the left-side pin of the Terminal Block. Connect the Terminal Block to the DV 12 V Port of the GV-IPCAM.

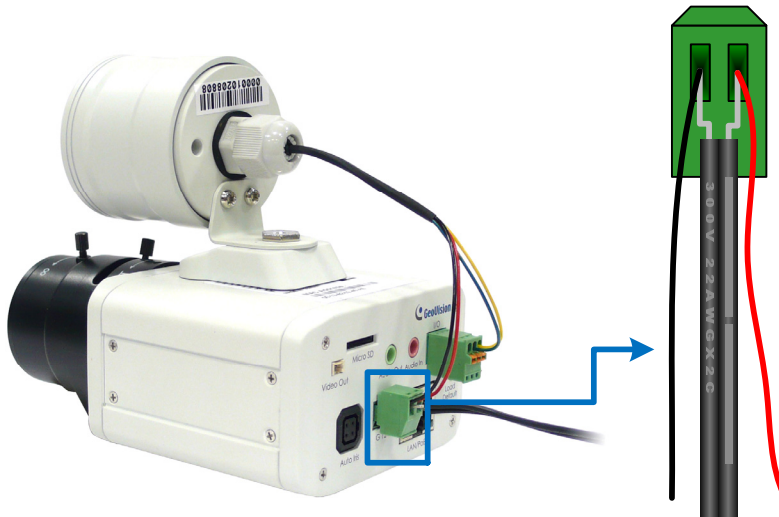


Figure 5

6. Connect the green wire to **Pin 2** and the yellow wire to **Pin 3** on I/O Terminal Block connector.

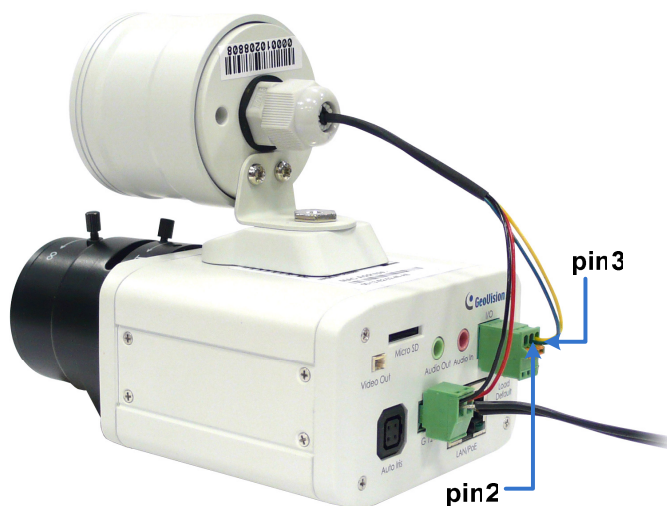


Figure 6

---

**Note:** Ensure not to connect the yellow wire to pin 1 on the I/O terminal block, or the GV-IR LED T2 will be always turned on.

---

### 3. Installing GV-IR LED T2

After connecting the GV-IR LED T2 to the GV-IPCAM, you need to access the Web interface of the GV-IPCAM to install the GV-IR LED T2. Follow the steps below:

1. Access the Web interface of the GV-IPCAM.

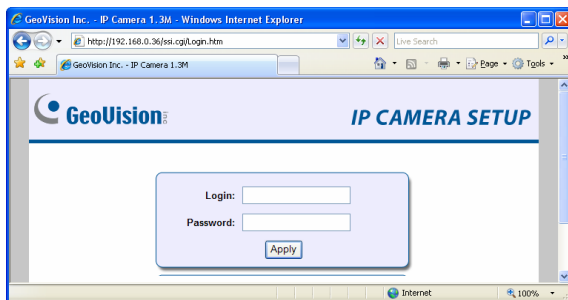


Figure 5

2. Select **Video and Motion**, select **Video Settings**, select **Streaming 1**, set **IR Check Function** from the following options, and then click **Apply**.

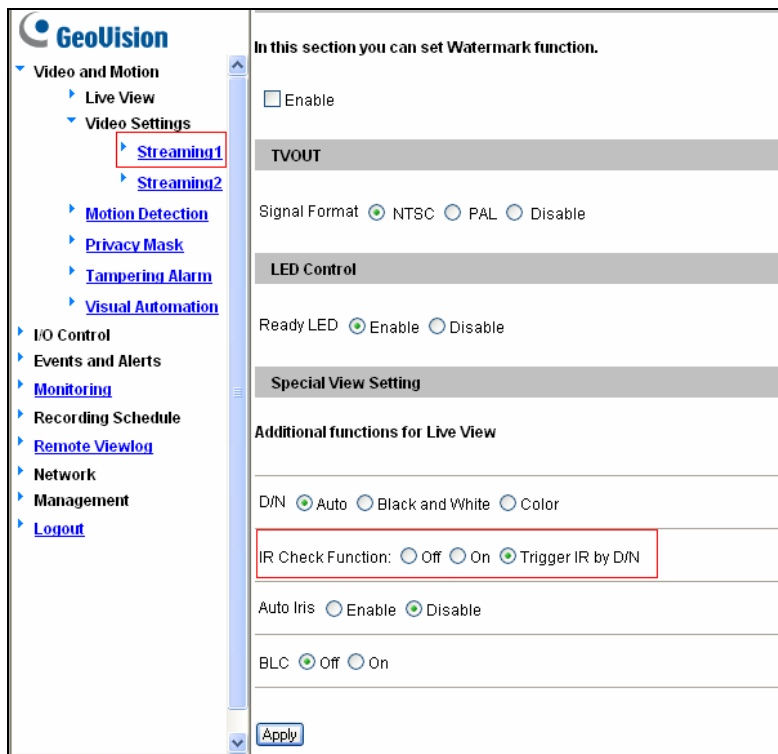


Figure 6

- **Off:** Select this option to leave the GV-IR LED T2 in the ON status continuously.
- **On:** Select this option to leave the GV-IR LED T2 in the OFF status continuously.
- **Trigger IR by D/N:** Select this option to trigger the GV-IR LED T2 to turn on in the Night mode and turn off in the Day mode.

## 4. Specifications

<b>Power</b>	12V DC, 250 mA
<b>IR Wavelength</b>	850 nm
<b>Environment</b>	Indoor use only
<b>IR LED Quantity</b>	12 IR LEDs
<b>Illumination View Angle</b>	35°
<b>Illumination Range</b>	10 m / 32.81 ft
<b>Illumination Life</b>	10,000 hrs
<b>Trigger Type</b>	Dry Contact
<b>Operating Temperature</b>	0°C ~ 50°C
<b>Weight</b>	140 g / 0.31 lbs
<b>Dimensions (H x W x D)</b>	49 x 47 x 67 (mm) / 1.93 x 1.85 x 2.64 (in)