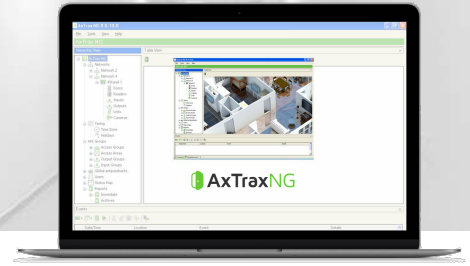


AxTraxNG

Access Control Management Software

V27.7.x.x



Introduction

Rosslare's AxTraxNG™ version V27.7.x.x is a complete client-server software management system enabling management of modular networked access control panels.

General Description

AxTraxNG™ is an intuitive and user-friendly scalable software platform used for Access Control and Automation system management. It is rich in functionality, including reporting, backup, firmware upgrades. Using this cutting-edge platform, you can easily integrate and deploy various security and time and attendance applications. It fully supports Rosslare's range of AC-215x, AC-225x, AC-425x and AC-825x networked control panels.

AxTraxNG™ includes the AxTraxNG™ server and separate AxTraxNG™ client. One AxTraxNG™ Server can control several sites and supply services to multiple AxTraxNG™ clients.

With AxTraxNG™, you can control and monitor every aspect of onsite access control. The software includes a built-in security system that controls accessibility to the system's database, and logs all operations.

AxTraxNG™ integrates with Rosslare's Video Surveillance software – ViTrax™, as well as many other advanced applications and third-party NVR equipment.

Main Features

- Multi-factor credential support for Card / PIN / UHF / FP Template / Face Template / LPR / and Mobile Credentials
- Fully integrated with Rosslare Bio8000 and Bio9000 series fingerprint and face recognition terminals
- Integrates with security and user management solutions such as VMS and NVR
- Password-controlled for high level of security
- Compatible with Rosslare's range of AC-215x, AC-225x, AC-425x and AC-825IP networked control panels
- Advanced Access Group assignment and complete Access Monitoring capability
- Manages user data, photo and information fields, access rights, alarms, strike time, and door mode all from one central location
- Car parking management
- Produces reports from acquired data such as usage reports, attendance records, visitors and roll calls. Reports can be customized and filtered
- One server can operate many clients, with different interface languages for each client
- License plate recognition allows vehicle recognition, monitoring and managing with LPR cameras
- Mustering capabilities with monitoring of onsite personnel

Specifications

Computer Specifications	
Operating system	Windows 7, Windows 8, Windows 10, Windows Server 2012, Windows Server 2016, Windows Server 2019
Minimum PC requirements	Intel i5 2.4GHz or higher, 4 GB RAM, 500 GB HDD, LAN port for TCP/IP
Data Base Features (DB)	
DB version	Microsoft SQL Server 2012 Express, password protected. Supports up to Microsoft SQL Server 2017.
DB Backup	Backup now option or clear all now option Complete DB export configuration or by event (selectable backup and restore) Auto file naming for backups Automatic backups
Main Features	
User capacity	AC-215: 5,000 AC-215B/IPB, AC-225B/IPB, AC-425B/IPB: 30,000 AC-825IP: 100,000 Up to 16 credentials per user and user credential double authentication by reader and time zone
Event capacity	AC-215: 5,000 AC-215B/IPB, AC-225B/IPB, AC-425B/IPB: 20,000 AC-825IP: 500,000
Networks	1024 controllers: up to 10,000 readers
Supported Access Control Panel Models	AC-215/215IP, AC-215-B /215IP-B, AC-215-DIN, AC-225/225IP, AC-225-B / 225IP-B, AC-225-DIN, AC-425/425IP, AC-425-B / 425IP-B, AC-425-DIN, AC-825IP, AC-825IP with R/S/D/P-805
Panel Networks Communication Interface	Serial (RS-232/485), TCP-IP
Communication Speed	9600, 19200, 57600 and 115200 bps
Time zones	Up to 256 time zones that can be assigned to Access/Reports/Update
Holidays	Up to 64 holiday dates, synchronizes with MS Outlook
Supports multiple reader modes	PIN only, PIN and card, PIN or card, card only, Desktop
Alarm handler	Advanced event color coding of Tamper/Forced/Antipassback/Input Alarm events with confirmation status/ email notifications
User dual authentication	The reader grants access only for two credentials per user per access



DISCLAIMER: The data contained within Rosslare's materials or documentation is intended to provide only general information about products available for purchase from Rosslare Enterprises Ltd. and its associated companies ("Rosslare"). Reasonable efforts have been made to ensure the accuracy of this information. However, it might contain typographic errors, inaccuracies, or omissions that may relate to product descriptions, visual pictures, specifications, and other details. All technical specifications weights, measures and colors shown, are best approximations. Rosslare can not be held responsible and assumes no legal liability for the accuracy or completeness of the information provided. Rosslare reserves the right to change, delete, or otherwise modify the information, which is represented, at any time, without any prior notice.

© 2021 Rosslare Enterprises Ltd. All rights reserved.

For more information regarding support, visit <https://support.rosslaresecurity.com/portal/en/home>.