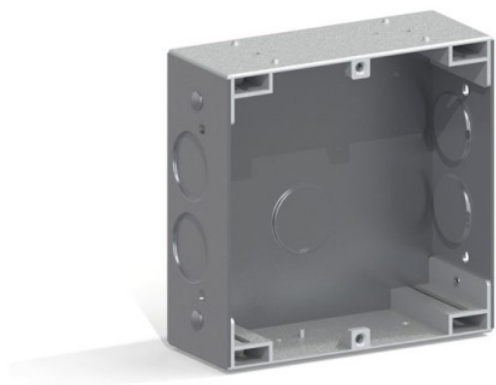


## CITY FLUSH BOX FOR KIT (S1)

**Reference:** 8948

In order to install a panel it is necessary to place a box in the wall where we will subsequently fix the panel.

The flushboxes are manufactured in plastic, with hinges which can fold in any direction,...

---

### DESCRIPTION

In order to install a panel it is necessary to place a box in the wall where we will subsequently fix the panel.

The flushboxes are manufactured in plastic, with hinges which can fold in any direction, allowing to hold the panel still during the wiring procedure. They have circular marks at the bottom of the box which can be easily pierced with a slight pressure, allowing to make the way for the cables to go through.

When different panels, always of the same series, are combined, it is necessary to use a set of joining bolts for a perfect fitting. A set of joining bolts is needed for each additional panel that is installed between every flushbox.

Available in all the series. Select the box of the necessary series depending on each case.

### TECHNICAL SPECIFICATIONS

**Weight:** 0,0936 kg

**Size of product when packed:** 5x11,5x11,5 cm

**EAN 13:** 8424299089485