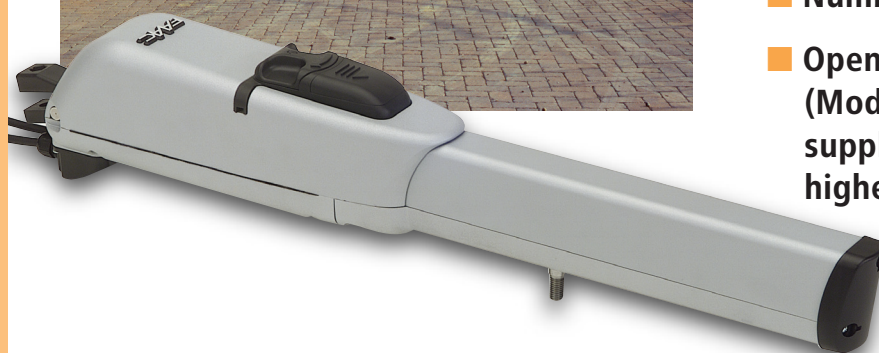


for swing gates  
with single-leaf length of 1.8 m (2,5 m with electric lock)



- Operator with OFF AXIS thrust
- Built-in mechanical stop for opening and closing
- Available with and without limit switch
- Coupling of the half-bodies by gasket
- Release device-key protected and easy to operate
- Numbered locks 1-36 (optional)
- Opening-closing limit switch (Mod. LS) 24 Vdc power supplied to guarantee the highest security

- Management of the limit switches: stops and deceleration

- Aluminium body completely double coated guaranteeing a higher resistance to atmospheric agents

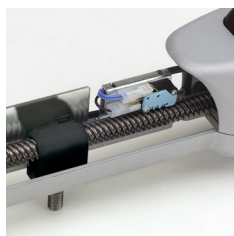
- Predisposition for the use of the "Gatecoder" deceleration kit



■ Release device-key protected and easy to operate



■ Horizontal cable exit for installations close to the ground



■ Easy adjustment through access from the top

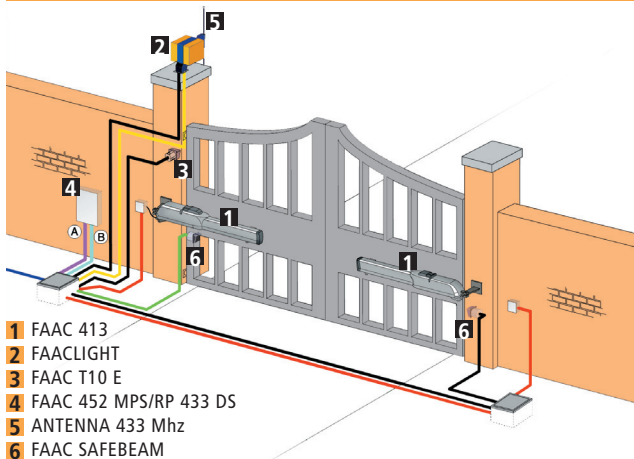
#### SPECIFICATIONS

Non-reversing electro-mechanical screw actuator for swing-leaf gates with "OFF-AXIS" thrust • Maximum leaf length 2.5 m • Max use type and frequency at 20° C S3 - 30% (413), 35% (413 LS) • Pillar installation • Leaf opening inwards or outwards • Max opening angle 110° • Max traction/thrust force of 200 daN • Rod speed 1.6 cm/s • Rod effective stroke 300 mm (350 mm without mechanical stops) • Power supply 230 Vac • Absorbed power 250 W • Thermal protection at 140° • Overall dimensions (Length x Width x Height) 785x105x148 mm • Protection class IP44 • Operating ambient temperature -20°C ÷ +55°C • Release device key "protected" • Aluminium body completely double coated.



- 1 Aluminium body completely double-layer coated guaranteeing a higher resistance to atmospheric agents
- 2 Coupling of the half-bodies by gasket

## INSTALLATION LAYOUT

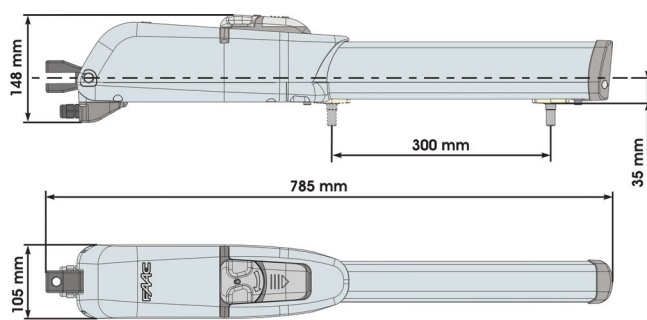


- 1 FAAC 413
- 2 FAACLIGHT
- 3 FAAC T10 E
- 4 FAAC 452 MPS/RP 433 DS
- 5 ANTENNA 433 Mhz
- 6 FAAC SAFEBEAM

Low voltage cabling		Power cabling (230V)	
(A)	3 cables 3x0,5	(B)	2 cables 3x1,5+T
	1 cable 2x0,5		1 cable 2x1,5+T
			1 cable 2x1,5

N.B: Cable diameters in mm<sup>2</sup>

## DIMENSIONS



Values in mm

Model	Use	
	Single leaf max length (m)	Use frequency (cycles/hour)
413	1.80 (2,5 m with electric lock)	~ 30
413 LS	1.80 (2,5 m with electric lock)	~ 25

Technical specifications	413	413 LS
Power supply	230 Vac	
Absorbed power	250 W	
Absorbed current	1,1 A	
Thermal protection	140° C	
Starting capacitor	6,3 µF	
Thrust force	200 daN	
Piston rod length	300 mm (350 mm without mechanical stops)	
Rod extension speed	1,6 cm/sec	
Single leaf max length*	2,5 m	
Type and use frequency at 20° C	S3 - 30%	S3 - 35%
Minimum cycles/hour at 20° C	~ 25	
Operating ambient temperature	-20° C ÷ +55° C	
Operator weight	6,5 Kg	
Dimensions	785 x 105 x 148	
Protection class	IP 44	
Limit switches	NO	YES
Opening and closing mechanical stops	NO	YES

\*For leaves exceeding the length of 1,8 m (each leaf) an electric lock is necessary



FAAC S.p.A. Via Benini, 1  
40069 Zola Predosa - Bologna (Italy)  
tel. +39 051 61724 · fax +39 051 758518  
www.faacgroup.com



Control equipments: please refer to the relevant brochures